

505 E. SHIAWASSEE ST, STE B LANSING MI - 1,462 SF

FOR
LEASE



PATRICK T. GILLESPIE

Business Development Analyst
ptgillespie@gillespie-group.com
517-333-4123

CONTACT US

330 Marshall St. Suite 100
Lansing, MI 48912
517-333-4123
gillespie-group.com

ANABEL STANTON

Commercial Sales & Leasing Coordinator
ptgillespie@gillespie-group.com
517-333-4123


GILLESPIE GROUP
LANSING

FOR LEASE

505 E. SHIAWASSEE ST, STE B LANSING MI

PROPERTY DETAILS

Address: 505 E. Shiawassee Street, Ste B, Lansing, MI 48912

Lease Rate: \$20.00/SF, NNN

Building SF: 1,462

Year Built: 1924

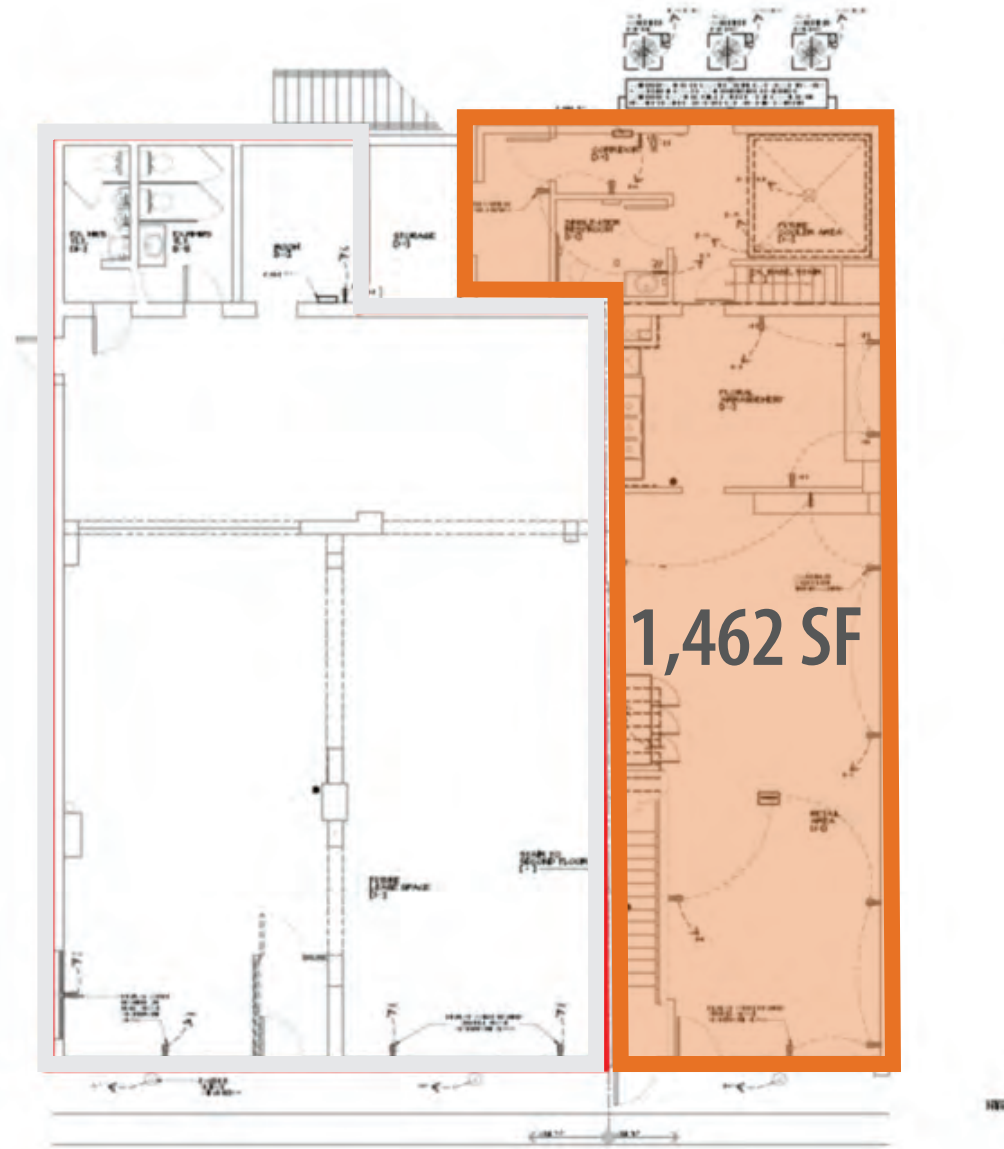
Information: This premier commercial space features onsite parking and a highly visible location along E. Shiawassee Street and N. Cedar Street, offering excellent signage opportunities.

AREA DESCRIPTION

505 E. Shiawassee Street offers a commercial lease opportunity in Lansing's vibrant Stadium District. The site is steps from the Lansing Center and Jackson Field, home of the Lansing Lugnuts, providing excellent foot traffic. The area is surrounded by over 15 bars, restaurants, and notable tenants, including Sparrow Bloom, Tiny Bit of Wood, Lansing Brewing Company, Capital City Market, Courtyard Lansing Downtown, National Title, Lansing Regional Chamber of Commerce, and Notre Dame Federal Credit Union.

Nearby Gillespie Group residential developments totaling over 500+ units, such as Stadium District Apartments, Outfield Lofts, Marketplace Apartments, and BLOCK600 Lofts, enhance the area's community appeal.

With a growing population and increasing foot traffic, the site is well-positioned to support the evolving needs of businesses. The surrounding demographics include a population of 14,316 within 1 mile, 84,692 within 3 miles, and 186,138 within 5 miles, with steady growth expected through 2029, ensuring continued commercial potential in this location.



FLOOR PLAN



PARKING



PHOTO GALLERY

505 E SHIAWASSEE ST, STE B

KEYED AMENITIES

- 1 MP SOCIAL
- 2 LANSING SHUFFLE
- 3 TINY BIT OF WOOD
- 4 THE HUMMINGBIRD
- 5 LANSING BREWING COMPANY
- 6 JACKSON FIELD
- 7 AMERICAN FIFTH
- 8 STARBUCKS
- 9 BOWDIE'S CHOPHOUSE
- 10 NUTHOUSE
- 11 SIDECAR SLIDER BAR
- 12 BIGGBY
- 13 CAPITAL CITY MARKET
- 14 COURTYARD BY MARRIOTT
- 15 STATE OF FITNESS



CONTEXT MAP