

300 N LARCH STREET, LANSING MI - UP TO 9,914 SF

INDUSTRIAL SPACE
FOR LEASE



CONTACT US

330 Marshall St. Suite 100
Lansing, MI 48912
517-333-4123
gillespie-group.com

PATRICK T. GILLESPIE

Business Development Analyst
ptgillespie-group.com
517-333-4123


GILLESPIE GROUP
LANSING



KEYED AMENITIES

- 1 MP SOCIAL
- 2 LANSING SHUFFLE
- 3 SPARROW BLOOM
- 4 TINY BIT OF WOOD
- 5 MICHIGRAIN DISTILLERY
- 6 THE HUMMINGBIRD
- 7 LANSING BREWING COMPANY
- 8 JACKSON FIELD
- 9 AMERICAN FIFTH
- 10 STARBUCKS
- 11 BOBCAT BONNIE'S
- 12 BOWDIE'S CHOPHOUSE
- 13 NUTHOUSE
- 14 SIDECAR SLIDER BAR
- 15 NOTRE DAME FEDERAL CREDIT UNION
- 16 BIGGBY
- 17 STATE OF FITNESS
- 18 CAPITAL CITY MARKET
- 19 COURTYARD BY MARRIOTT

CONTEXT MAP

FOR LEASE

300 N LARCH STREET, LANSING MI

PROPERTY DETAILS

Address: 300 N Larch Street, Lansing, MI 48912

Lease Rate: \$8.00/SF, NNN

Building SF: 9,914 (5,508 ground level)

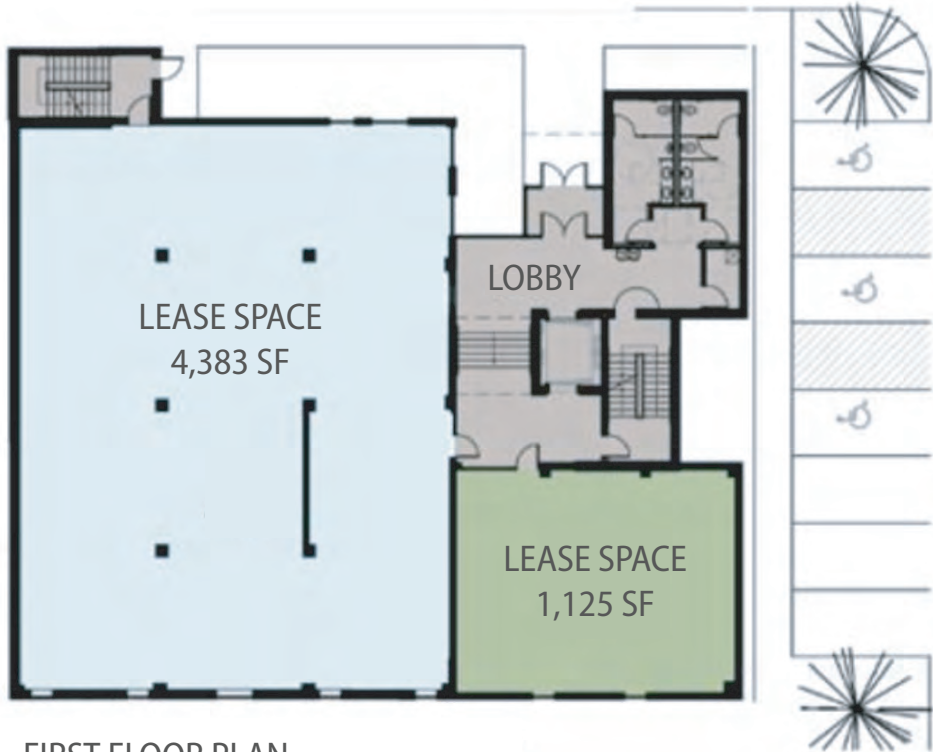
Parking: 30+ Spaces

- Information:
- Flexible layout suitable for various business needs.
 - 10-foot-high ceilings and 7-foot-high double door for easy access.
 - Includes a freight elevator and rear loading dock for efficient operations.
 - Less than a mile from I-496, offering easy transportation access.

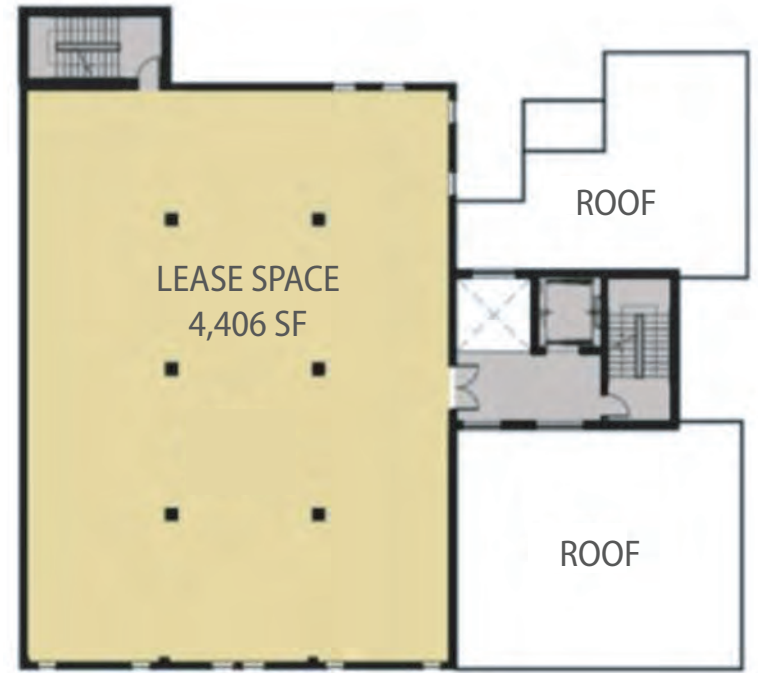
AREA DESCRIPTION

- Close to major landmarks and local institutions, including Jackson Field, Lansing Center, and Notre Dame Federal Credit Union.
- Surrounded by 15+ bars, restaurants, and businesses like Lansing Brewing Company and Capital City Market.
- Nearby Gillespie Group residential communities (500+ apartments) create a built-in customer base.
- Premier location on Larch Street with over 15,000 vehicles passing daily.

NORTH LARCH STREET



FIRST FLOOR PLAN



SECOND FLOOR PLAN

FLOOR PLANS



PHOTO GALLERY