

800 E. MICHIGAN AVE, LANSING MI - 1,200 SF

FOR  
LEASE



### PATRICK T. GILLESPIE

Business Development Analyst  
ptgillespie@gillespie-group.com  
517-333-4123

### CONTACT US

330 Marshall St. Suite 100  
Lansing, MI 48912  
517-333-4123  
gillespie-group.com

### ANABEL STANTON

Commercial Sales & Leasing Coordinator  
AStanton@gillespie-group.com  
517-333-4123



# FOR LEASE

# 800 E MICHIGAN AVE, LANSING

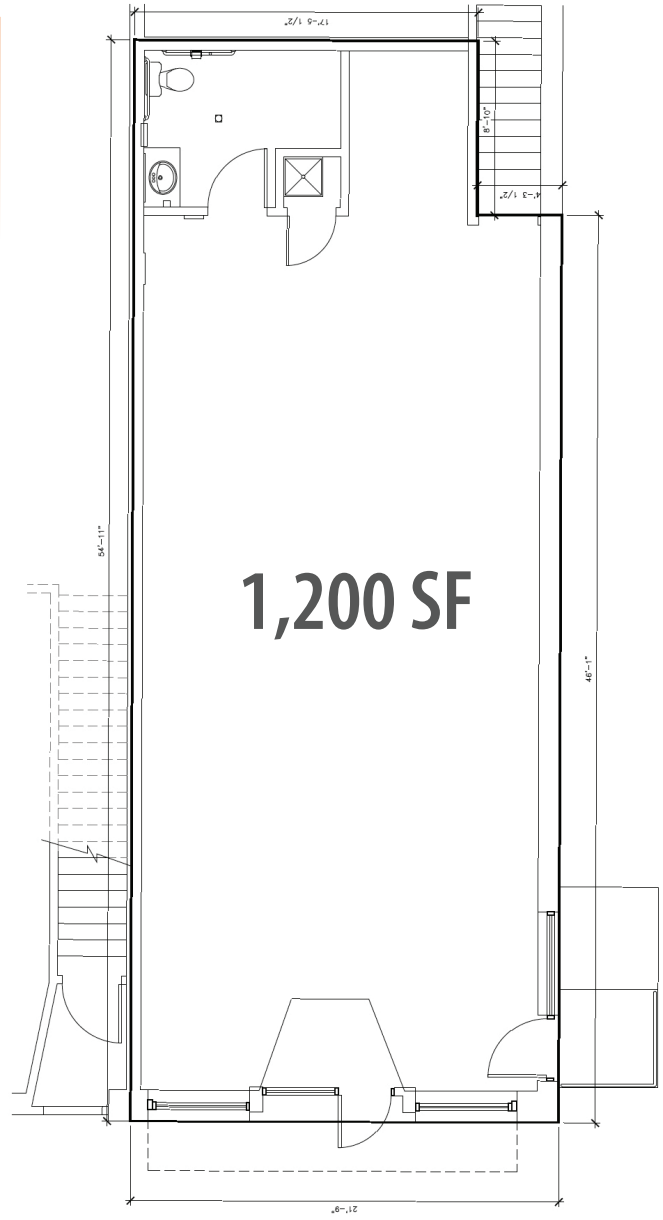
## PROPERTY DETAILS

Address:	800 E. Michigan Ave, Lansing, MI 48912
Lease Rate:	\$20.00/SF, NNN or \$2,500/month
Building SF:	1,200
Information:	This commercial space offers a large open layout ideal for service-based businesses, complete with private restrooms and an outdoor seating patio to enhance the customer experience. Its versatile design provides flexibility for a variety of uses, making it an excellent fit for businesses looking to grow and engage with the community.

## AREA DESCRIPTION

Located in the heart of the Stadium District of Downtown Lansing 800 E. Michigan Avenue offers an unparalleled opportunity to establish your business in a thriving and vibrant area. This location sits just blocks from the Michigan State Capitol and benefits from being in a downtown district that welcomes over 3.5 million annual visitors to its events, attractions, and businesses. The property is conveniently close to notable tenants and attractions, including Courtyard Lansing Downtown, Choose Lansing, Lansing Brewing Company, Jackson Field (home to the Lansing Lugnuts), and Capital City Market.

The surrounding area is home to a dynamic mix of professional offices, retail establishments, and dining options, creating a robust commercial environment. Lansing's population has grown to over 117,000 residents, with the greater metropolitan area exceeding 550,000 people, ensuring a steady flow of potential customers and clients. Additionally, the property enjoys proximity to major transportation routes, including easy access to I-496 and US-127, making it a premier location for businesses seeking visibility and convenience.



# FLOOR PLAN



PARKING



# INTERIOR PHOTO GALLERY



# INTERIOR PHOTO GALLERY



 **AccidentFund**  
Insurance Company of America

 **NEOGEN**  
CORPORATION

 **MSHDA**

 **UNIVERSITY OF MICHIGAN**  
HEALTH-SPARROW  
MICHIGAN MEDICINE



**800 E MICHIGAN AVE**

# CONTEXT MAP



### KEYED AMENITIES

- 1 MP SOCIAL
- 2 LANSING SHUFFLE
- 3 SPARROW BLOOM
- 4 TINY BIT OF WOOD
- 5 THE HUMMINGBIRD
- 6 LANSING BREWING COMPANY
- 7 JACKSON FIELD
- 8 AMERICAN FIFTH
- 9 STARBUCKS
- 10 BOWDIE'S CHOPHOUSE
- 11 NUTHOUSE
- 12 SIDECAR SLIDER BAR
- 13 NOTRE DAME FEDERAL CREDIT UNION
- 14 BIGGBY
- 15 STATE OF FITNESS
- 16 CAPITAL CITY MARKET
- 17 COURTYARD BY MARRIOTT

800 E. MICHIGAN AVE

# CONTEXT MAP