

154 S. LARCH STREET, LANSING MI - SUITE B 2,564 SF

FOR  
LEASE



#### CONTACT US

330 Marshall St. Suite 100  
Lansing, MI 48912  
517-333-4123  
[gillespie-group.com](http://gillespie-group.com)

#### PATRICK T. GILLESPIE

Business Development Analyst  
[ptgillespie-group.com](http://ptgillespie-group.com)  
517-333-4123



# FOR LEASE

## 154 S. LARCH STREET SUITE B

### PROPERTY DETAILS

Address:	154 S. Larch Street, Lansing, MI 48912
Lease Rate:	\$20.00/SF, NNN
Building SF:	2,564
Year Built:	2022
Information:	The property features three private offices, a dedicated conference room, and ample on-site parking. Additionally, a spacious basement provides extra storage, enhancing functionality and convenience for a variety of business needs.

### AREA DESCRIPTION

154 S. Larch Street, located in the Stadium District of Downtown Lansing, is designed for functionality and convenience. The property features onsite parking to accommodate both employees and visitors, along with dual entryways that optimize traffic flow and enhance accessibility. Its strategic location near the I-496 corridor ensures seamless connectivity to the Greater Lansing area and beyond, making it an ideal site for businesses requiring efficient transportation routes.

The property is situated in a vibrant commercial hub, benefiting from high visibility and close proximity to Lansing's downtown core. Just steps from government offices, the Capitol Building, and nearby Gillespie Group residential developments (500+ units), this location provides unparalleled access to a diverse mix of businesses, cultural attractions, and community resources.

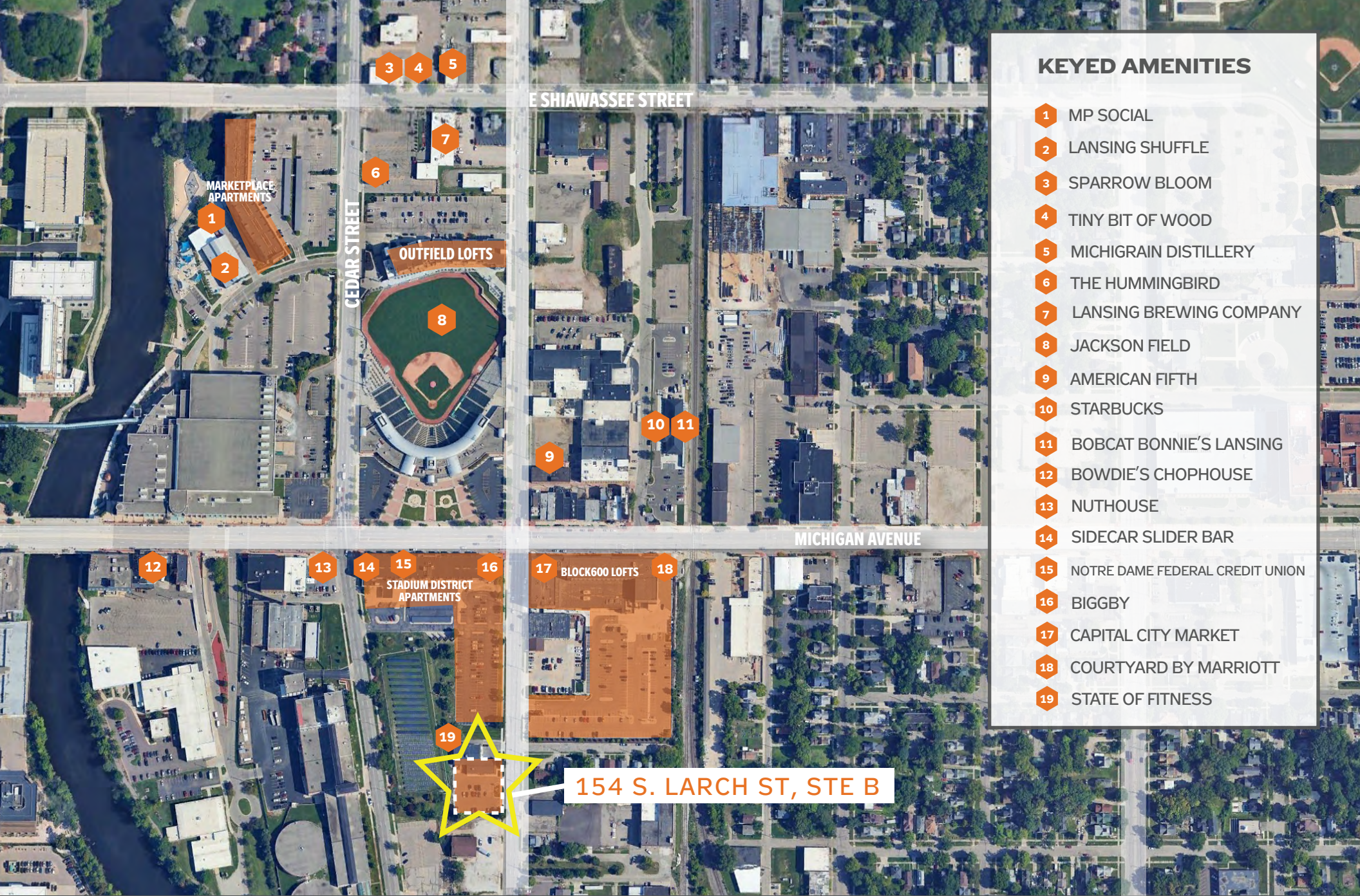
The city boasts a population of over 112,000 residents and a metro area exceeding 475,000 people, offering a strong and diverse customer base.





# PHOTO GALLERY



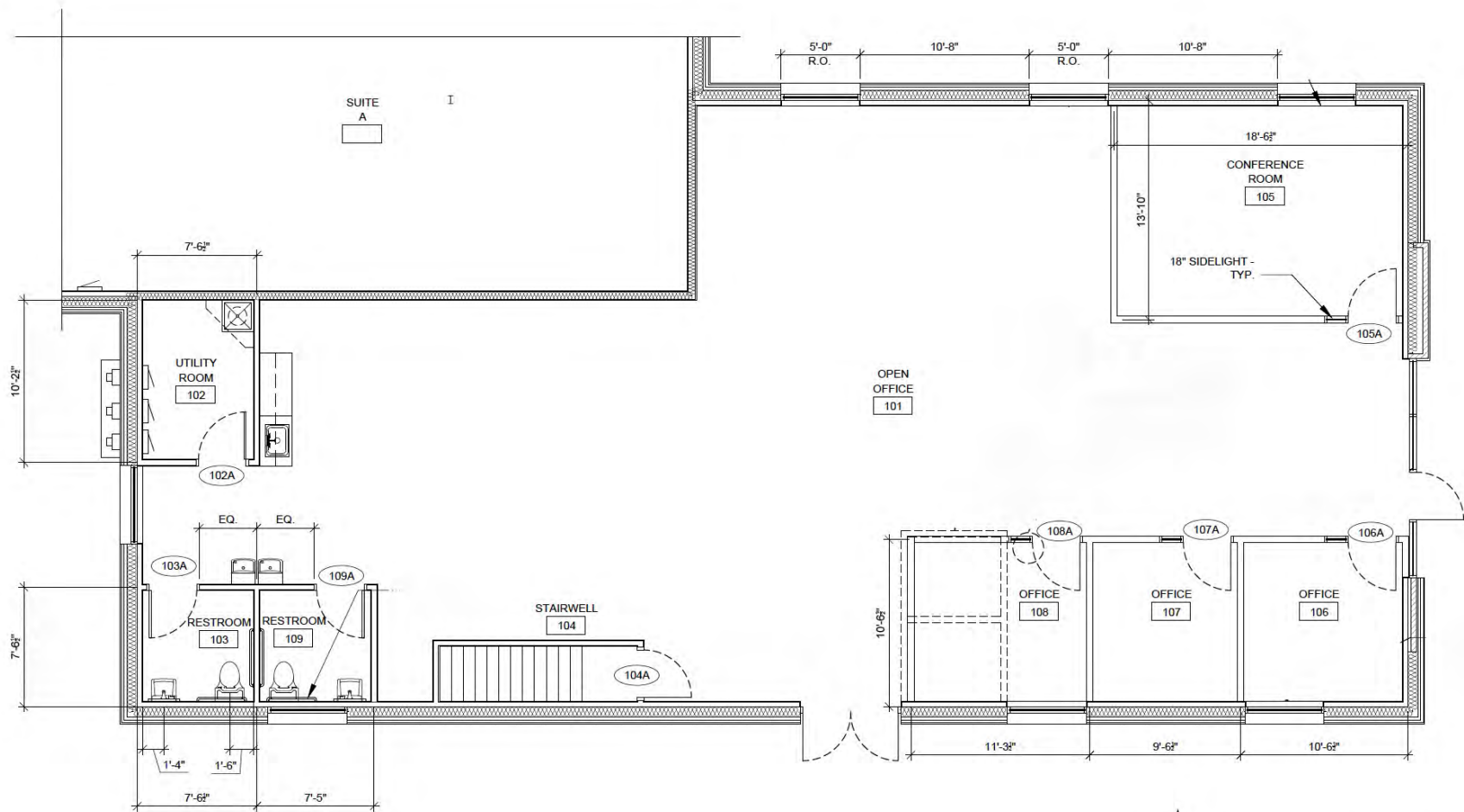


## KEYED AMENITIES

- 1 MP SOCIAL
- 2 LANSING SHUFFLE
- 3 SPARROW BLOOM
- 4 TINY BIT OF WOOD
- 5 MICHIGRAIN DISTILLERY
- 6 THE HUMMINGBIRD
- 7 LANSING BREWING COMPANY
- 8 JACKSON FIELD
- 9 AMERICAN FIFTH
- 10 STARBUCKS
- 11 BOBCAT BONNIE'S LANSING
- 12 BOWDIE'S CHOPHOUSE
- 13 NUTHOUSE
- 14 SIDECAR SLIDER BAR
- 15 NOTRE DAME FEDERAL CREDIT UNION
- 16 BIGGBY
- 17 CAPITAL CITY MARKET
- 18 COURTYARD BY MARRIOTT
- 19 STATE OF FITNESS

# CONTEXT MAP

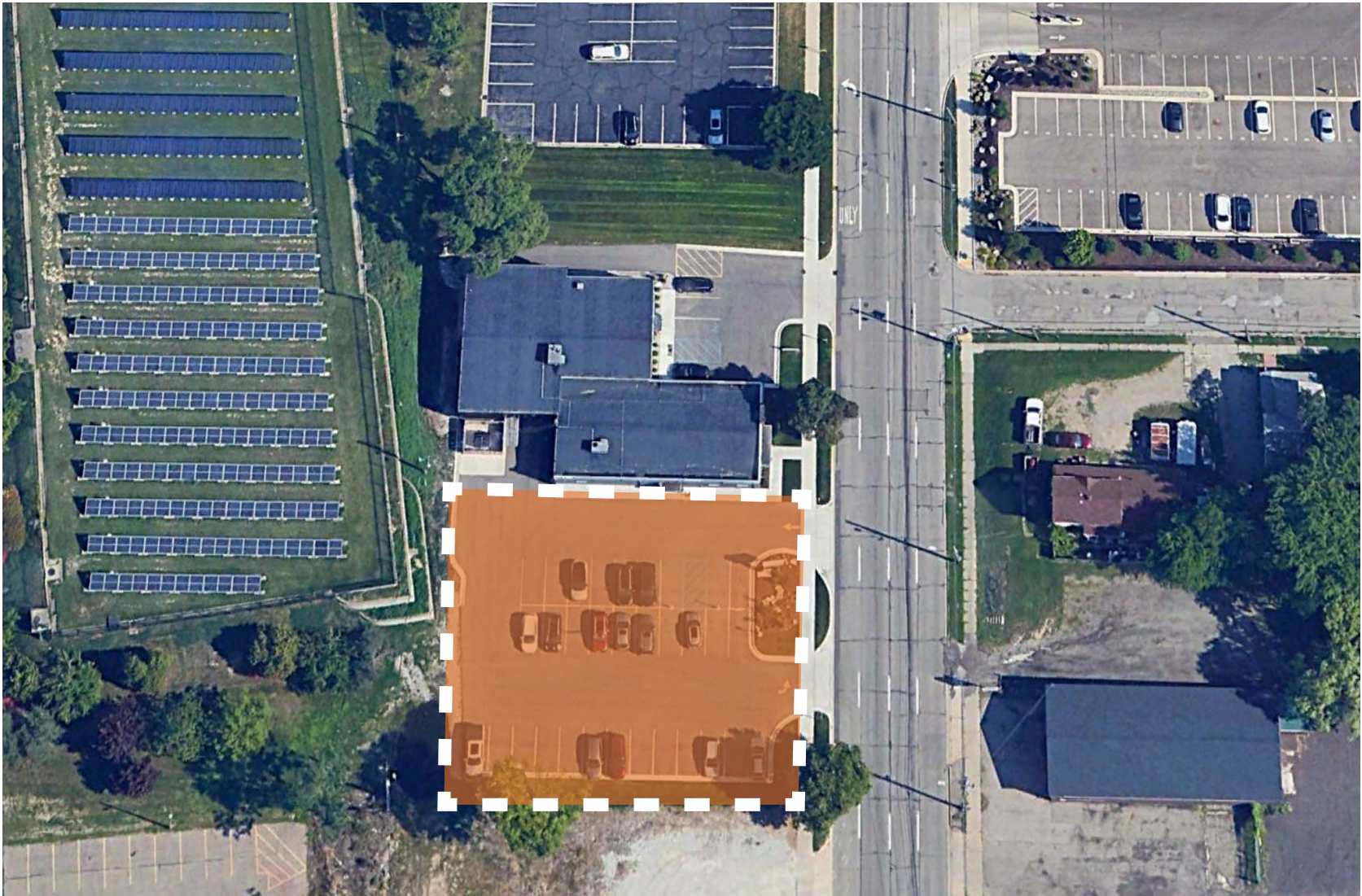




**FLOOR PLAN**

SCALE: 3/16" = 1'-0"

# FLOOR PLAN



PARKING





# SIGNAGE OPPORTUNITIES