

603 - 613 EAST MICHIGAN AVENUE, LANSING, MI

FOR
LEASE

630 - 1,895 SF



CONTACT US

330 Marshall St. Suite 100
Lansing, MI 48912
517-333-4123
gillespie-group.com

PATRICK T. GILLESPIE

Business Development Analyst
ptgillespie-group.com
517-333-4123


GILLESPIE GROUP
LANSING



SITE VIEW

FOR LEASE

603 - 613 EAST MICHIGAN AVENUE

PROPERTY DETAILS

Address: 603 - 613 East Michigan Avenue Lansing, MI 48912

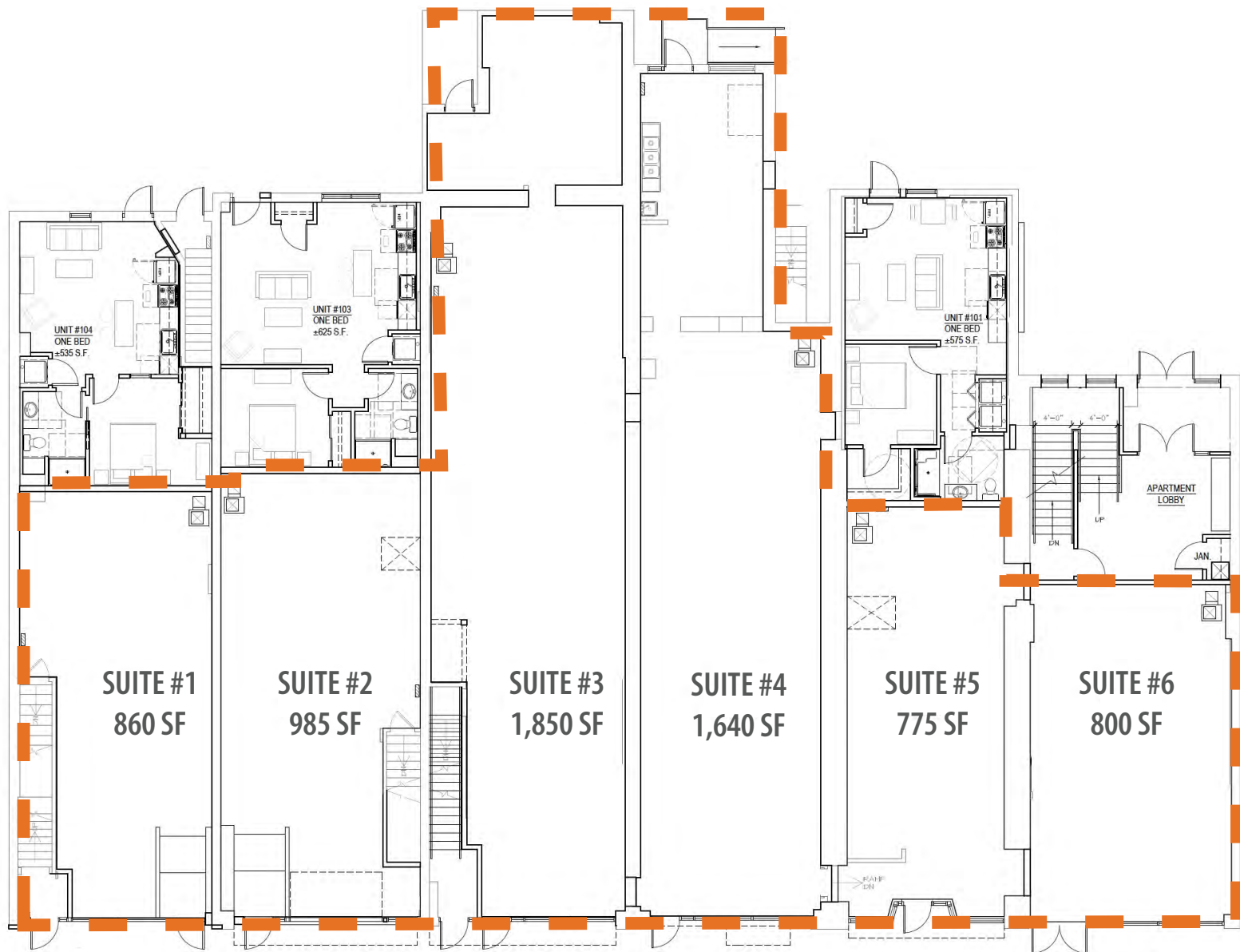
Building SF: 630 - 1,895

Information: The redevelopment of this site will consist of both residential and commercial space, critical to reenergizing the Michigan Avenue Corridor.

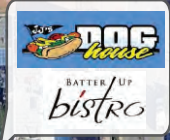
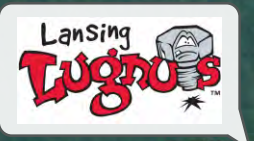
AREA DESCRIPTION

Situated in the heart of the Stadium District of Downtown Lansing, a vibrant area attracting more than 4.8 million visitors annually, this site offers unparalleled visibility with prime signage opportunities for businesses aiming to succeed in an energy-filled environment. The location benefits from significant foot traffic, driven by both visitors and nearby Gillespie Group residential developments. The location offers a premier opportunity to activate an outdoor patio space.

The site is situated amongst a variety of diverse office tenants including Diversified National Title, Lansing Regional Chamber of Commerce, Coontz Law, Choose Lansing, and more. The surrounding area features over 15 bars and restaurants and is steps away from the Lansing Center and Jackson Field, home of the Lansing Lugnuts.



FLOOR PLAN



SITE

Street Parking

Street Parking

Street Parking

Street Parking



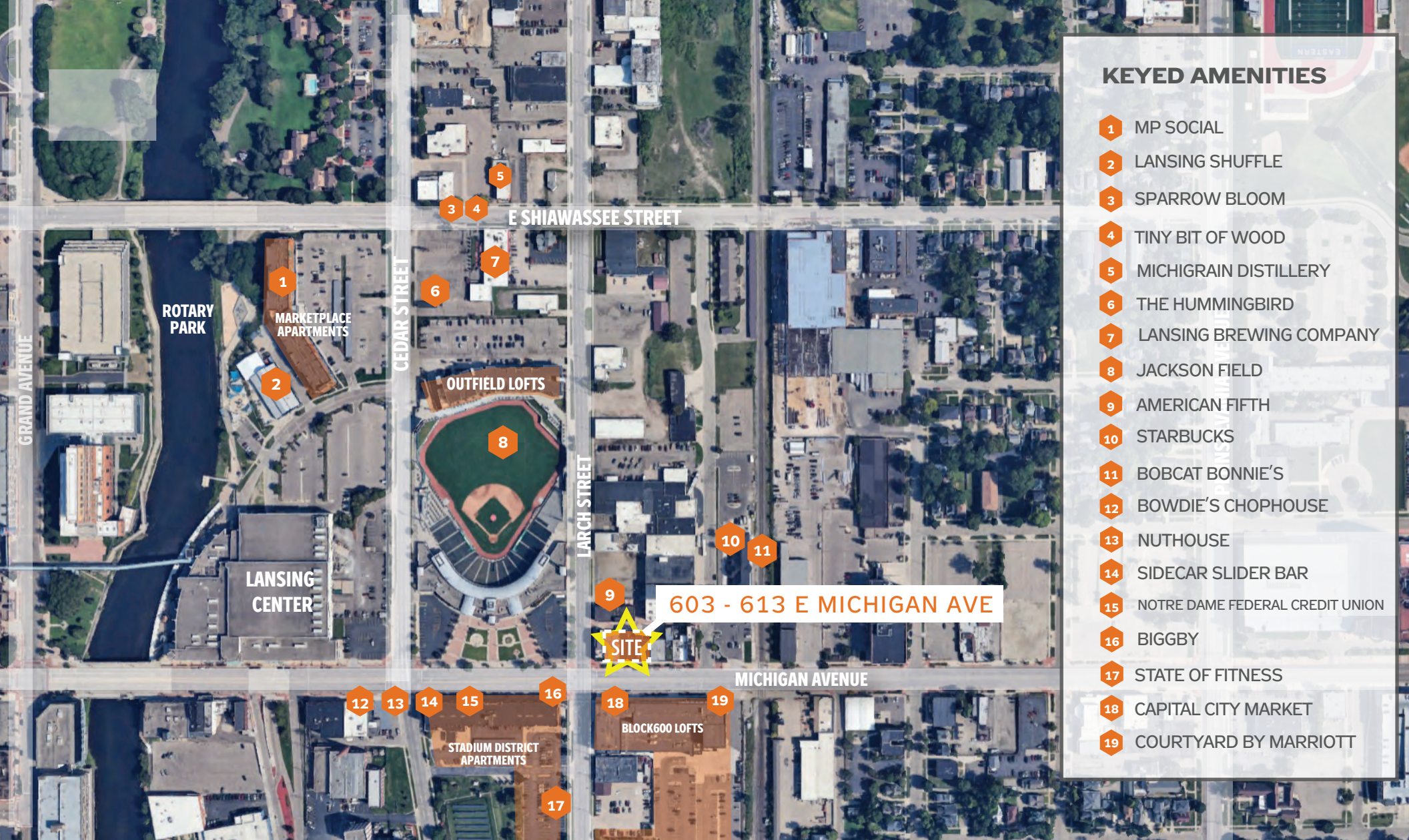
PARKING



RENDERING



RENDERING



KEYED AMENITIES

- 1 MP SOCIAL
- 2 LANSING SHUFFLE
- 3 SPARROW BLOOM
- 4 TINY BIT OF WOOD
- 5 MICHIGRAIN DISTILLERY
- 6 THE HUMMINGBIRD
- 7 LANSING BREWING COMPANY
- 8 JACKSON FIELD
- 9 AMERICAN FIFTH
- 10 STARBUCKS
- 11 BOBCAT BONNIE'S
- 12 BOWDIE'S CHOPHOUSE
- 13 NUTHOUSE
- 14 SIDECAR SLIDER BAR
- 15 NOTRE DAME FEDERAL CREDIT UNION
- 16 BIGGBY
- 17 STATE OF FITNESS
- 18 CAPITAL CITY MARKET
- 19 COURTYARD BY MARRIOTT

CONTEXT MAP