

300 N. LARCH STREET, LANSING, MI

AVAILABLE FOR LEASE
NOW LEASING: 14,000 SF



PROPERTY INFO

- 14,000 SF
- Built to accommodate needs
- Ample surface parking
- 210 feet depth from Larch Street
- 144 feet of Larch Street frontage with high traffic volume (15,231 AADT)
- Prominent building signage available
- Excellent visibility from Cooley Law School Stadium, attracting over 500,000 people annually
- One block north of the highly-anticipated Capital City Market and Courtyard by Marriott, coming 2020
- Surrounded by unique talent, restaurants, arts & entertainment
- Close proximity to the Michigan State Capitol: 0.5 miles
- Close proximity to Michigan State University: 2.5 miles / 50,351 students
- Large employers in the area include Sparrow Hospital, State of Michigan, Accident Fund, Lansing Community College and Neogen

CONTACT

PATRICK T. GILLESPIE

Business Development Analyst
517.333.4123
ptgillespie@gillespie-group.com

GILLESPIE-GROUP.COM



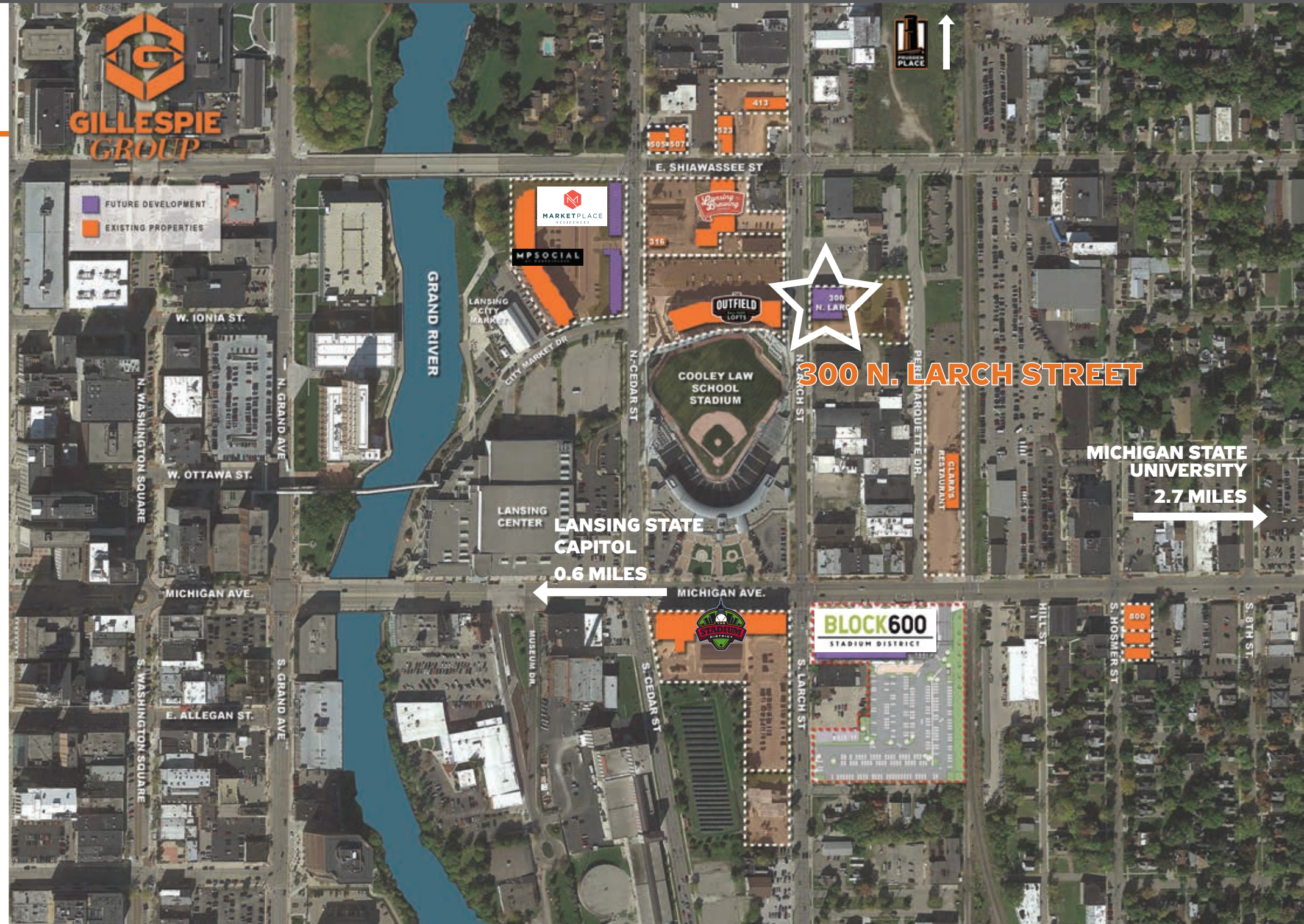
GILLESPIE
GROUP

300 N. LARCH STREET, LANSING, MI

AVAILABLE FOR LEASE
NOW LEASING: 14,000 SF

AERIAL MAP AND RENDERINGS

Renderings are for inspirational purposes only.

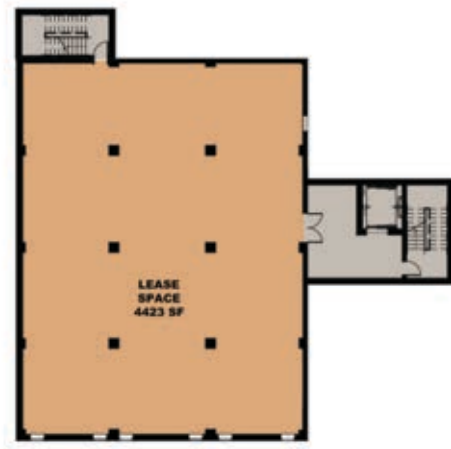


GILLESPIE-GROUP.COM

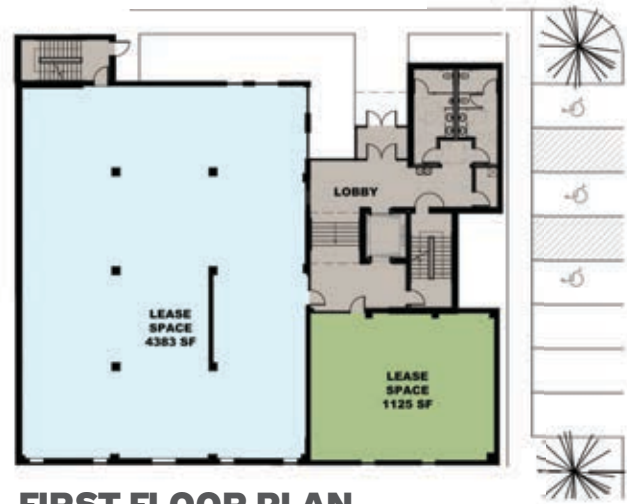


FLOOR PLANS AND RENDERINGS

Renderings are for inspirational purposes only.



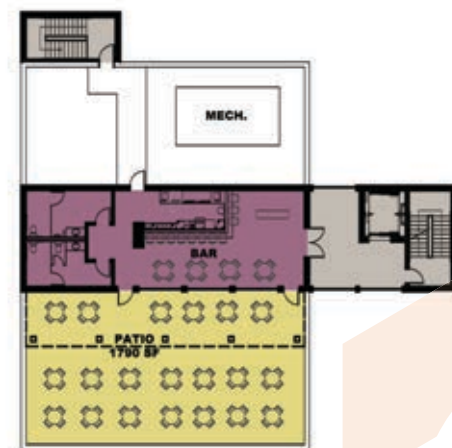
BASEMENT PLAN



FIRST FLOOR PLAN



SECOND FLOOR PLAN



ROOF PLAN

