

154 S. LARCH STREET, LANSING MI - SUITE B 2,564 SF

FOR
LEASE



PATRICK T. GILLESPIE

Business Development Analyst
ptgillespie-group.com
517-333-4123

CONTACT US

330 Marshall St. Suite 100
Lansing, MI 48912
517-333-4123
gillespie-group.com

JAYDEN SOLES

Commercial Leasing Specialist
jsoles@gillespie-group.com
517-333-4123


GILLESPIE GROUP
LANSING

FOR LEASE

154 S. LARCH STREET SUITE B

PROPERTY DETAILS

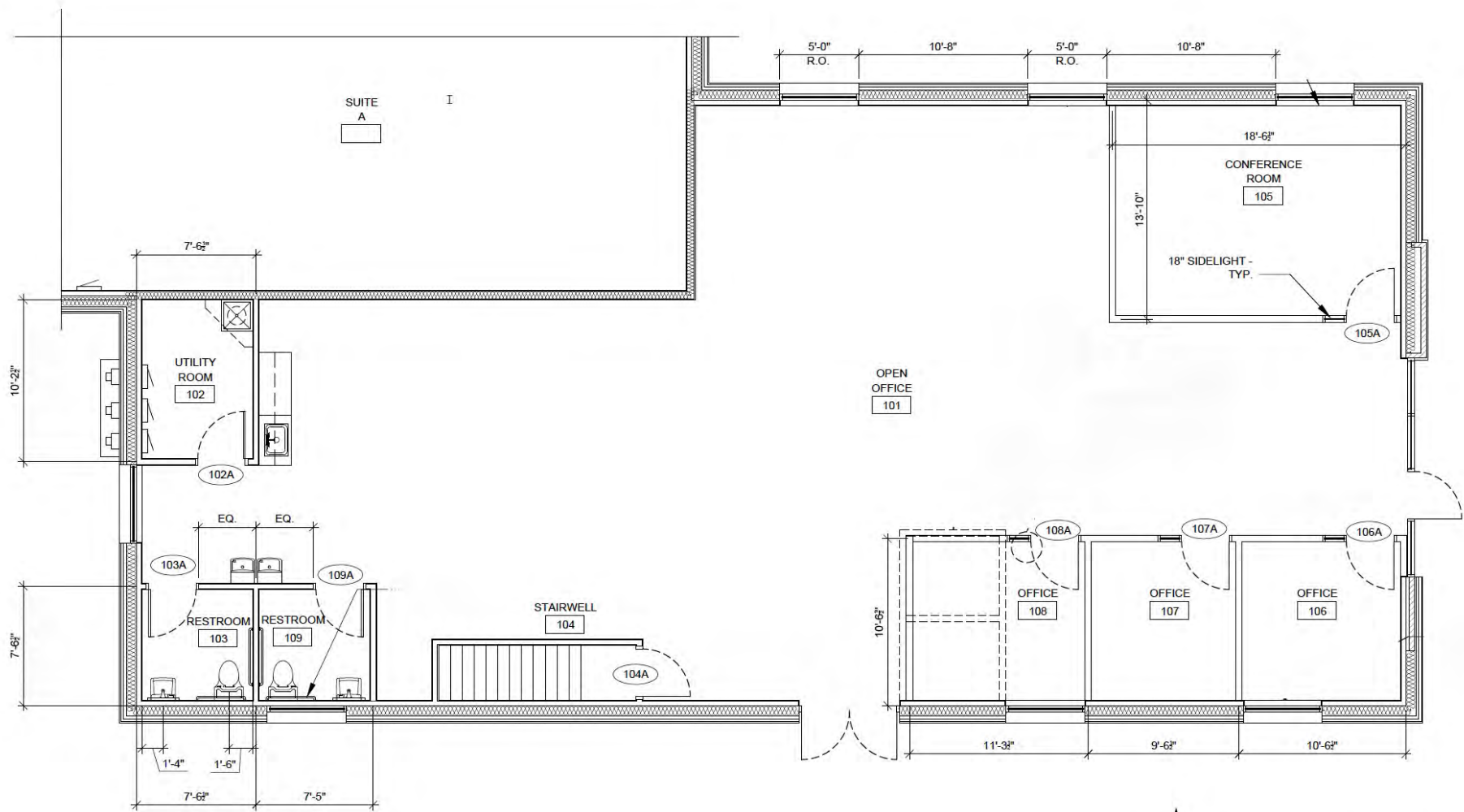
Address:	154 S. Larch Street, Lansing, MI 48912
Lease Rate:	\$20.00/SF, NNN
Building SF:	2,564
Year Built:	2022
Information:	The property features three private offices, a dedicated conference room, and ample on-site parking. Additionally, a spacious basement provides extra storage, enhancing functionality and convenience for a variety of business needs.

AREA DESCRIPTION

154 S. Larch Street, located in the Stadium District of Downtown Lansing, is designed for functionality and convenience. The property features onsite parking to accommodate both employees and visitors, along with dual entryways that optimize traffic flow and enhance accessibility. Its strategic location near the I-496 corridor ensures seamless connectivity to the Greater Lansing area and beyond, making it an ideal site for businesses requiring efficient transportation routes.

The property is situated in a vibrant commercial hub, benefiting from high visibility and close proximity to Lansing's downtown core. Just steps from government offices, the Capitol Building, and nearby Gillespie Group residential developments (500+ units), this location provides unparalleled access to a diverse mix of businesses, cultural attractions, and community resources.

The city boasts a population of over 112,000 residents and a metro area exceeding 475,000 people, offering a strong and diverse customer base.




FLOOR PLAN
 SCALE: 3/16" = 1'-0"

FLOOR PLAN



PARKING



SIGNAGE OPPORTUNITIES



PHOTO GALLERY



KEYED AMENITIES

- 1 MP SOCIAL
- 2 LANSING SHUFFLE
- 3 SPARROW BLOOM
- 4 TINY BIT OF WOOD
- 5 MICHIGRAIN DISTILLERY
- 6 THE HUMMINGBIRD
- 7 LANSING BREWING COMPANY
- 8 JACKSON FIELD
- 9 AMERICAN FIFTH
- 10 STARBUCKS
- 11 BOBCAT BONNIE'S LANSING
- 12 BOWDIE'S CHOPHOUSE
- 13 NUTHOUSE
- 14 SIDECAR SLIDER BAR
- 15 NOTRE DAME FEDERAL CREDIT UNION
- 16 BIGGBY
- 17 CAPITAL CITY MARKET
- 18 COURTYARD BY MARRIOTT
- 19 STATE OF FITNESS