

500 E. MICHIGAN AVE STE 130, LANSING MI - 1,788 SF

FOR
LEASE



PATRICK T. GILLESPIE

Business Development Analyst
ptgillespie-group.com
517-333-4123

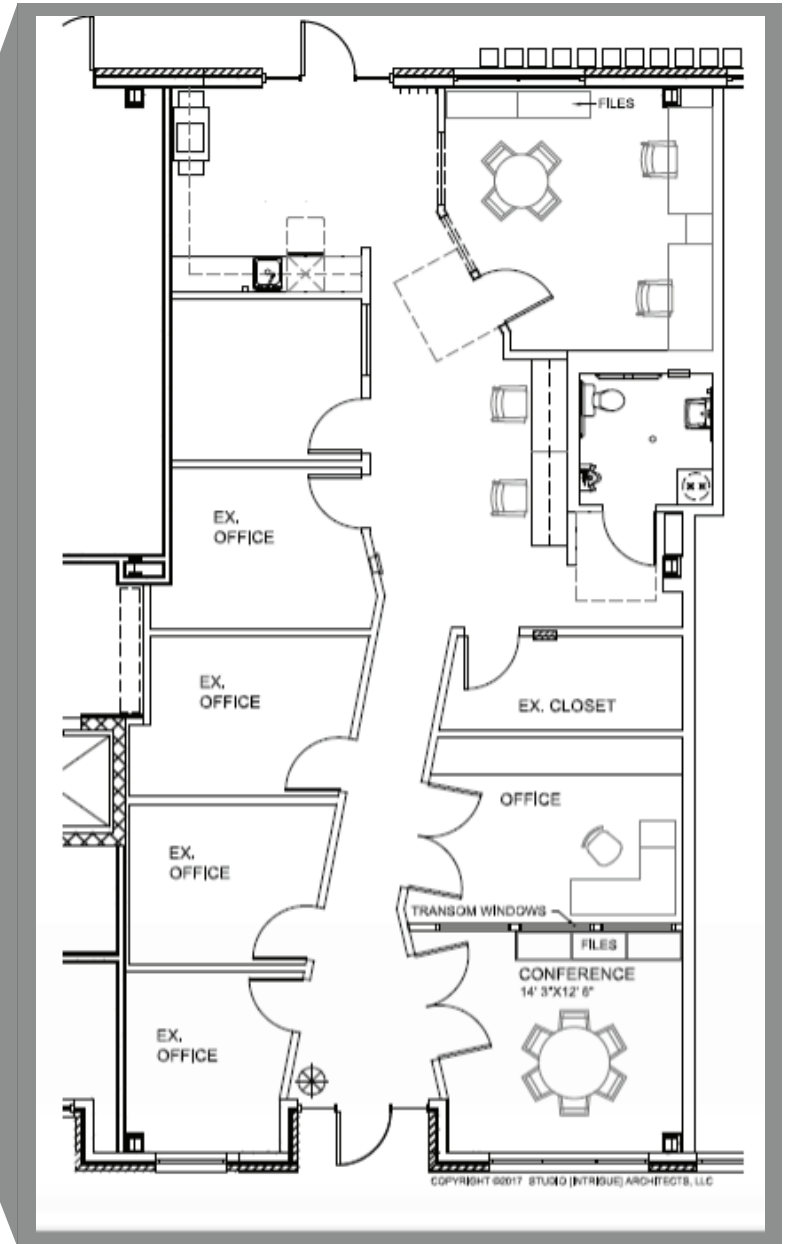
CONTACT US

330 Marshall St. Suite 100
Lansing, MI 48912
517-333-4123
gillespie-group.com

JAYDEN SOLES

Commercial Leasing Specialist
jsoles@gillespie-group.com
517-333-4123


GILLESPIE GROUP
LANSING



FLOOR PLAN

FOR LEASE

500 E. MICHIGAN AVE STE 130

PROPERTY DETAILS

Address: 500 E. Michigan Ave STE 130 Lansing, MI 48912

Lease Rate: \$23.00/SF, NNN

Building SF: 1,788

Year Built: 2005

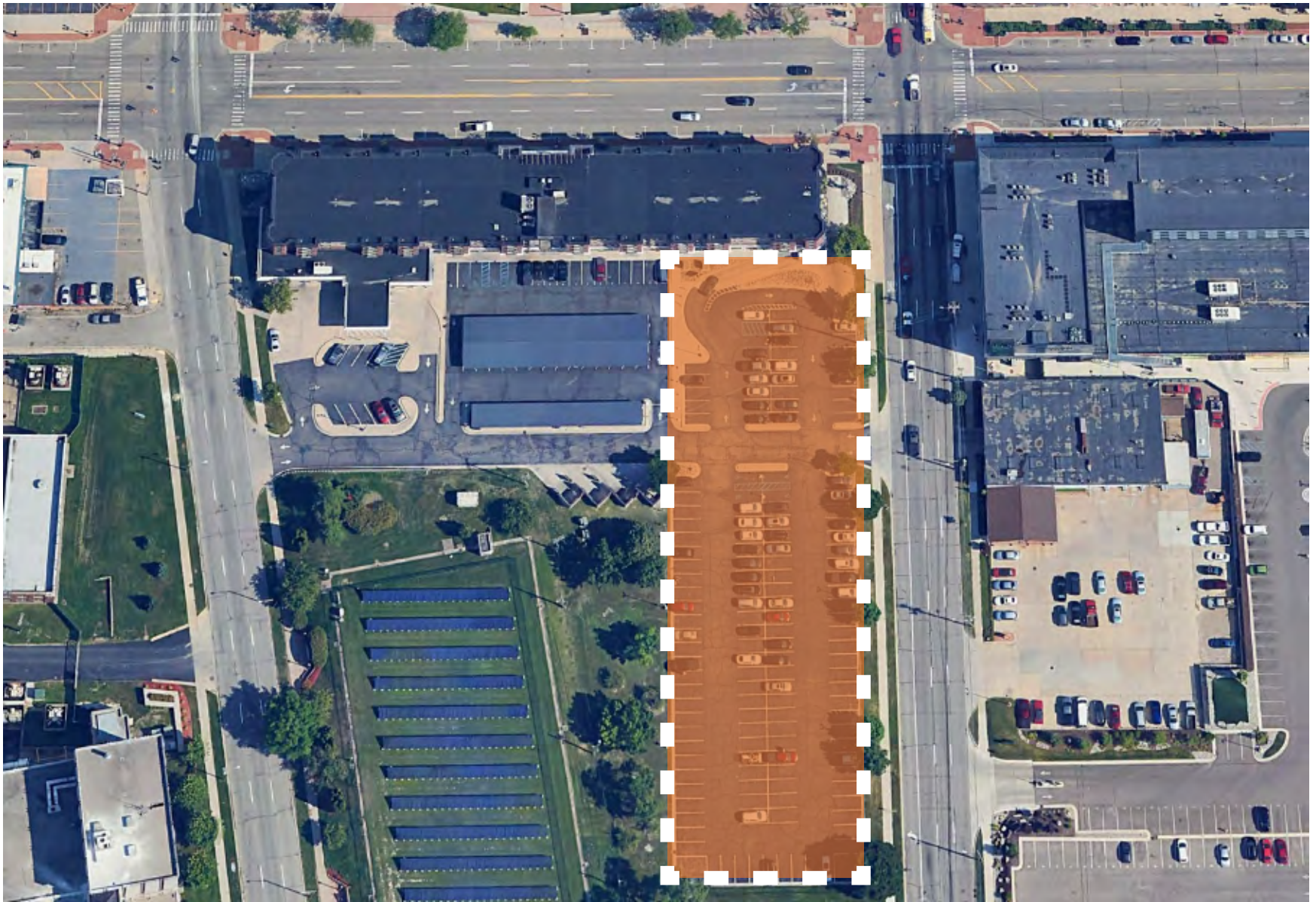
Information: The site offers premier Michigan Avenue signage opportunities and a newly renovated office space. It provides high visibility from major Lansing streets and convenient onsite parking.

AREA DESCRIPTION

This property is located in the heart of the vibrant Stadium District in downtown Lansing, a bustling area that attracts over 4.8 million visitors annually. Offering unmatched visibility and exposure, the space is ideal for businesses seeking a dynamic, high-traffic environment. With modern infrastructure and versatile floor plans, the property is designed to accommodate a variety of uses, including office, retail, and service-based operations.

Strategically situated near key landmarks such as the Michigan State Capitol, Lansing City Hall, and major employers like the State of Michigan, Sparrow Health System, and leading automotive industry suppliers, the property benefits from a steady flow of professionals, students, and visitors. Downtown Lansing is home to over 1,000 businesses, creating a thriving economic hub supported by diverse demographics and a strong local economy.

The Stadium District's community appeal is further enhanced by nearby Gillespie Group residential developments totaling over 500+ residential units, including Stadium District Apartments, Outfield Lofts, Marketplace Apartments, and BLOCK600 Lofts. These developments contribute to a lively atmosphere and consistent foot traffic in the area. This suite is located within the well-known Stadium District building, surrounded by other dynamic businesses and organizations, including the Lansing Regional Chamber of Commerce, Tri-Star Trust, Biggby Coffee, Sidecar Slider Bar, Greater Lansing Convention & Visitors Bureau, and Notre Dame Federal Credit Union.



PARKING

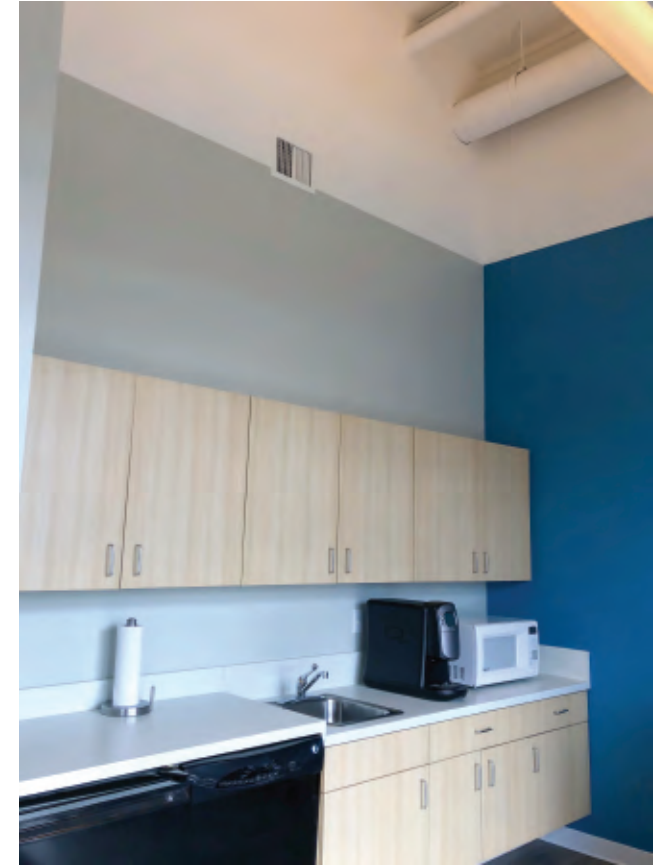


PHOTO GALLERY



KEYED AMENITIES

- 1 MP SOCIAL
- 2 LANSING SHUFFLE
- 3 SPARROW BLOOM
- 4 TINY BIT OF WOOD
- 5 MICHIGRAIN DISTILLERY
- 6 THE HUMMINGBIRD
- 7 LANSING BREWING COMPANY
- 8 JACKSON FIELD
- 9 AMERICAN FIFTH
- 10 STARBUCKS
- 11 BOBCAT BONNIE'S
- 12 BOWDIE'S CHOPHOUSE
- 13 NUTHOUSE
- 14 SIDECAR SLIDER BAR
- 15 NOTRE DAME FEDERAL CREDIT UNION
- 16 BIGGBY
- 17 STATE OF FITNESS
- 18 CAPITAL CITY MARKET
- 19 COURTYARD BY MARRIOTT

CONTEXT MAP