

3645 E. JOLLY RD, LANSING, MI

NOW LEASING

PROPERTY INFO

- 12,148 SF (6,074 SF 1st floor, 6,074 SF lower level)
- Professional office building close to medical services
- Renovated option including 3,000 SF of space with separated suite entrances
- 43 onsite parking spaces
- Highly visible building on the corner of Jolly & Collins
- Minutes from the new McLaren Lansing campus
- 2.5 miles from Michigan State University
- Local amenities nearby including restaurants, shopping, and lodging
- Excellent street frontage for retail or office
- Constructed in 1991
- Full basement with elevator
- Easy access to I-96 and US-127

CONTACT

PATRICK T. GILLESPIE

Business Development Analyst

517.333.4123

ptgillespie@gillespie-group.com

GILLESPIE-GROUP.COM



**GILLESPIE
GROUP**

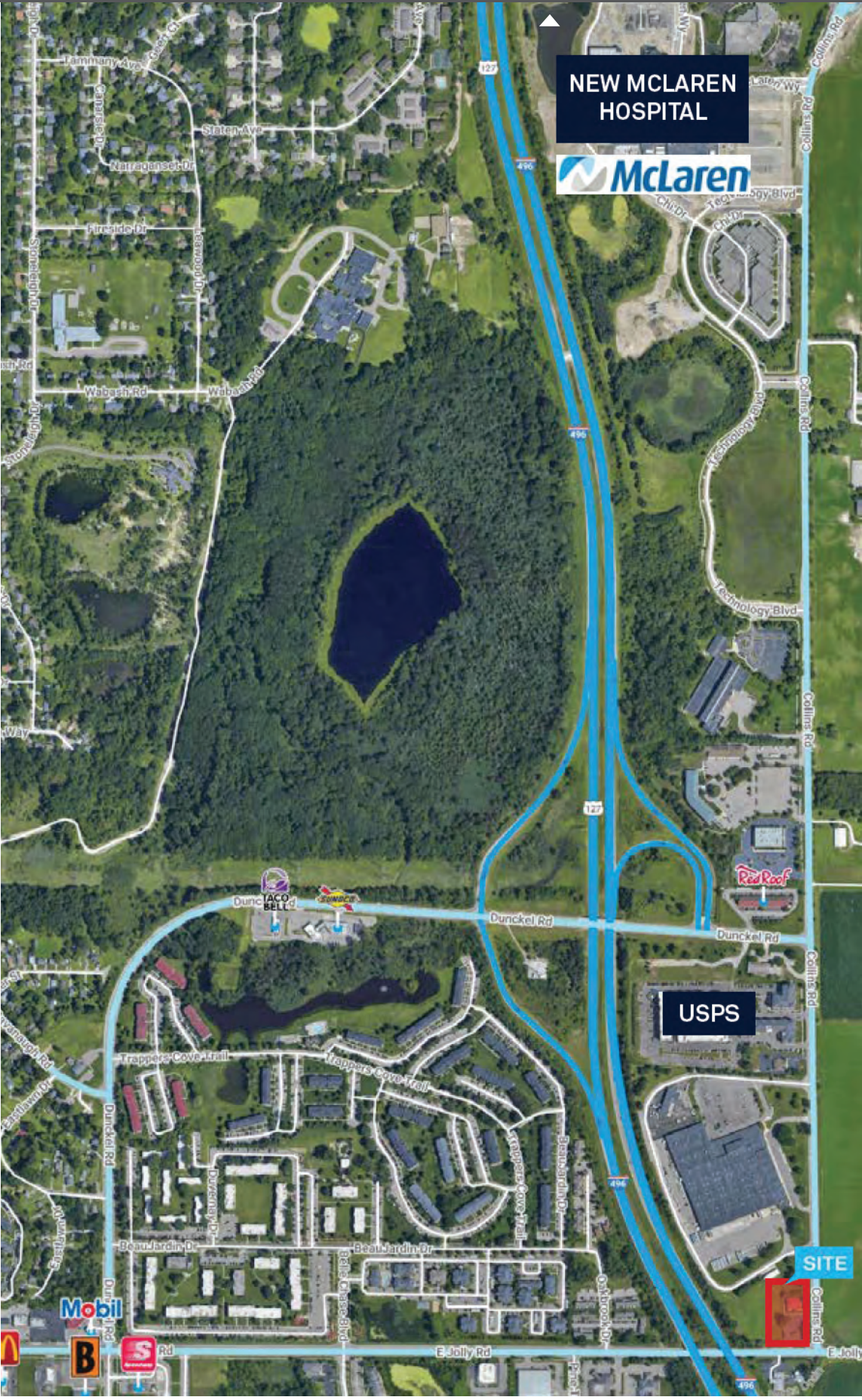
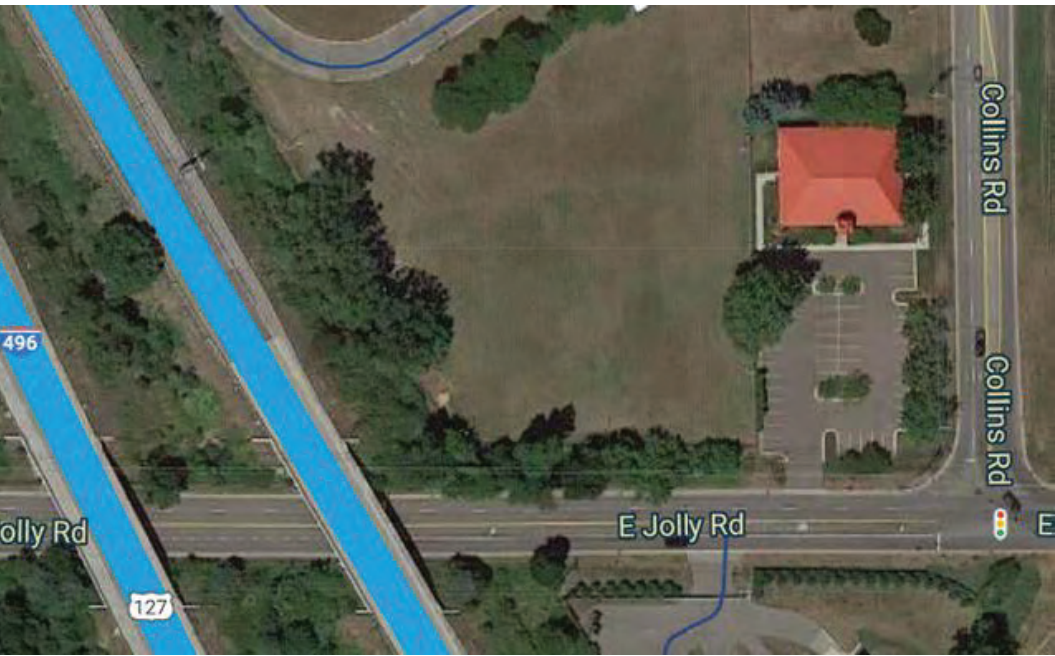
3645 E. JOLLY RD, LANSING, MI

AVAILABLE FOR LEASE
HIGH-VISIBILITY SPACE

AERIAL MAP AND EXTERIOR PHOTOS

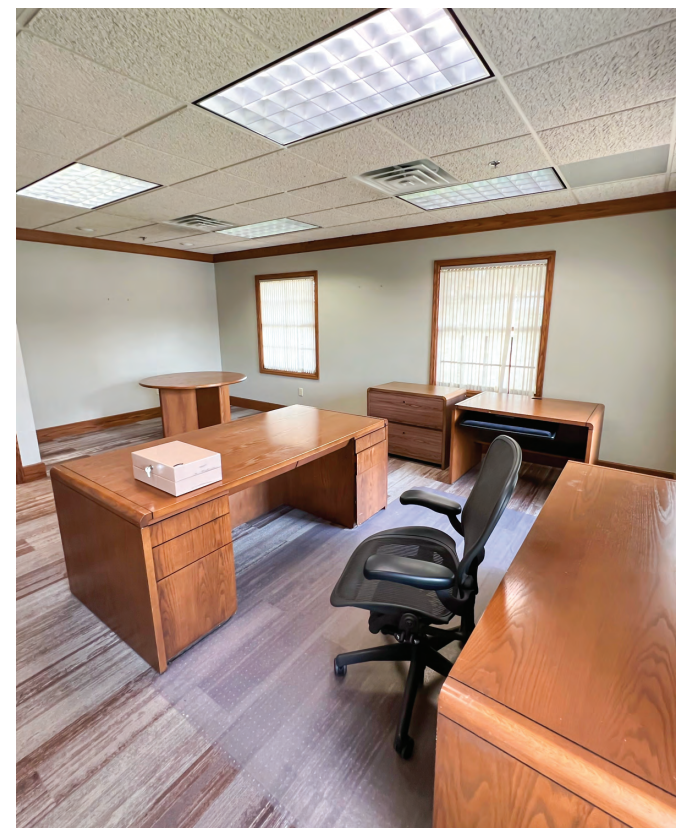
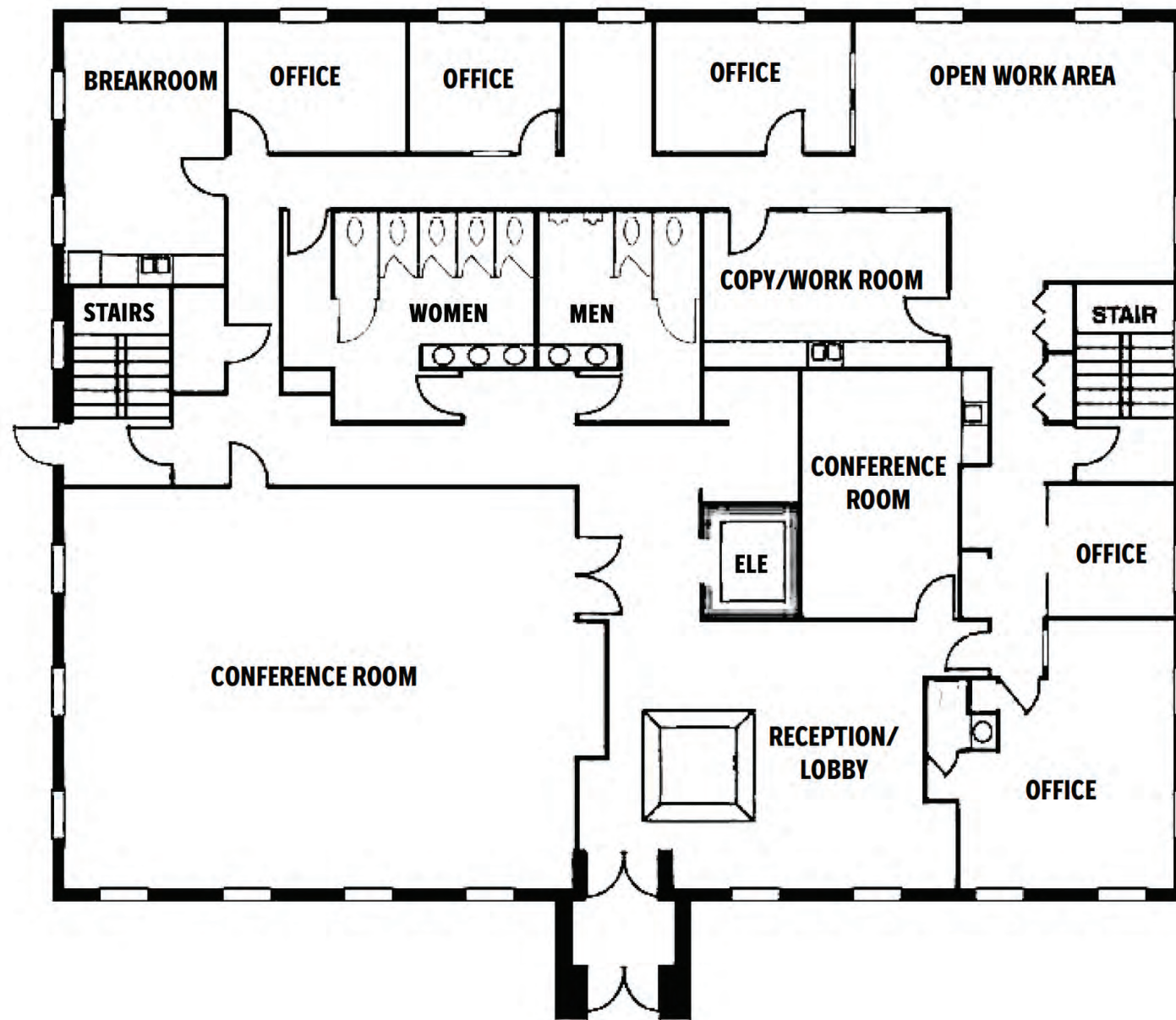
CONTACT **PATRICK T. GILLESPIE**

Business Development Analyst
517.333.4123
ptgillespie@gillespie-group.com



GILLESPIE-GROUP.COM

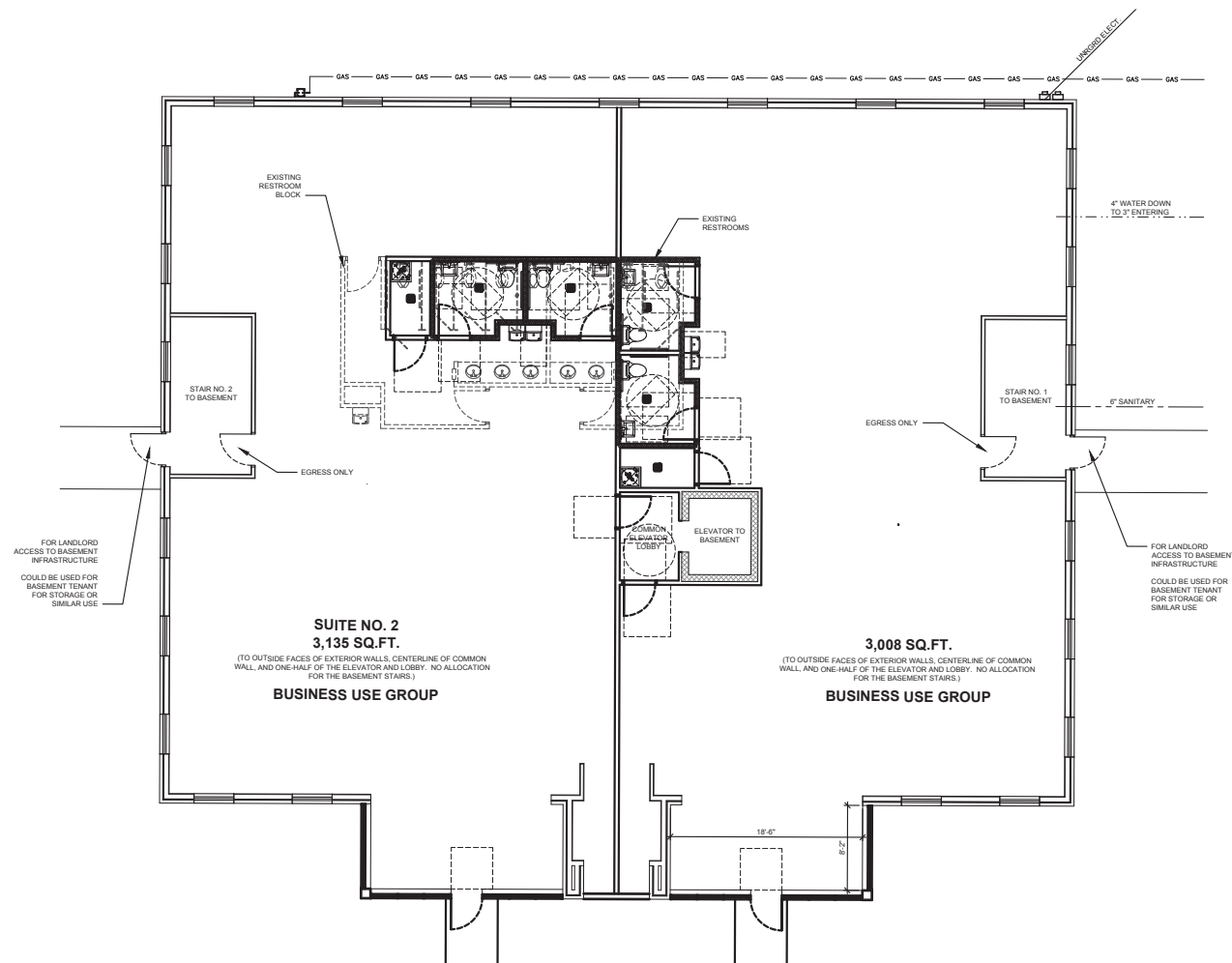
MOVE-IN READY OFFICE SPACE FOR YOUR TEAM TO CALL HOME



OFFICE USE

- First Floor – 6,074 SF
- 24.00/SF, Modified Gross
- Immediate Occupancy Available

RETAIL FOCUSED FLOOR PLAN OPTIONS TO HELP YOUR BUSINESS THRIVE



RETAIL USE

- Two (2) 3,000 SF spaces
- Separate suite access
- \$30.00/SF, NNN
- Tenant Improvement Allowance included



EAST ELEVATION - DESIGN OPTION D
SCALE: 3/16" = 1'-0"



SOUTH ELEVATION - DESIGN OPTION D
SCALE: 3/16" = 1'-0"