

# 125 E KALAMAZOO ST



**GILLESPIE**  
*GROUP*

**AVAILABLE SPACE FOR LEASE**  
**1,385 SF**





## PROPERTY INFO

- Brand new interior buildout (office, ADA restroom, two rooms with sinks and open retail space)
- Large storefront windows
- Prominent building signage opportunities
- Adjacent parking lot spaces included in lease
- Footsteps from Washington Square
- Close proximity to the Michigan State Capitol: 0.4 miles
- Easy access to I-496

## RENTAL RATES

- \$16.00/SF, NNN
- Triple nets estimated at \$5.50/SF

## CONTACT

### PATRICK T. GILLESPIE

Business Development Analyst  
517.333.4123  
ptgillespie@gillespie-group.com

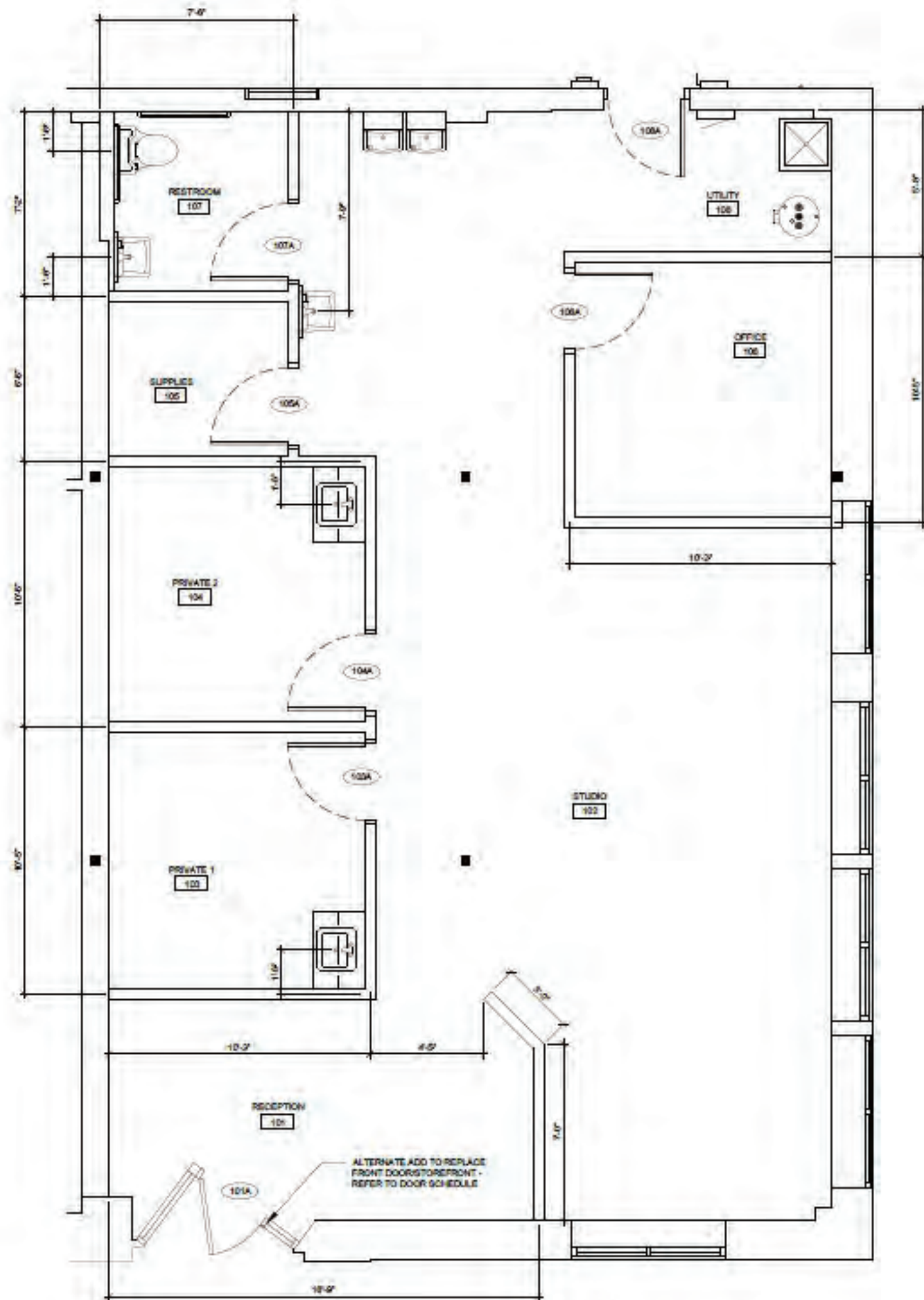
**GILLESPIE-GROUP.COM**



**GILLESPIE**  
*GROUP*

**OFFICE • RESTAURANT • RETAIL**





# FLOOR PLAN

