



LIVE  
THE  
WAY  
YOU  
WANT

Main  
Street  
A MOVEMENT OF INCLUSION







## EXPLORE THE NEIGHBORHOOD

### See Rockville Differently

Located near the Rockville Metro Station in Downtown Rockville, Maryland, residents of Main Street can take advantage of all that Rockville has to offer – movies, restaurants, shopping and ongoing activities at Rockville Town Center. The variety of spaces and programs within the building and Main Street's prime location allow residents the opportunity to continuously connect with community.

Our great location within walking distance to Rockville Metro Station gives you quick and convenient access to exactly what you need in Rockville, Maryland. Living in our new apartments saves you time on your daily commute, so you can spend it on the things in life that bring you joy.



# COMMUNITY AMENITIES

FITNESS CENTER

YOGA STUDIO /  
PEACE ROOM

TEACHING KITCHEN

COMMUNITY ROOM

CYBER LOUNGE

CLASSROOM /  
MEETING SPACES

SOULFULL COFFEE  
SHOP

SMOKE-FREE CAMPUS

NATIONAL GREEN  
BUILDING STANDARD  
- SILVER

EASY ACCESS  
TO PUBLIC  
TRANSPORTATION

ONSITE PARKING (AS  
AVAILABLE)

WI-FI IN COMMON  
AREAS

PET-FRIENDLY  
COMMUNITY



# APARTMENT FEATURES

STUDIO, 1, 2 & 3  
BEDROOM LAYOUTS

STAINLESS-STEEL  
APPLIANCES

GRANITE  
COUNTERTOPS

FULL-SIZE WASHER &  
DRYERS

CEILING FANS IN  
EACH BEDROOM

LVT HARDWOOD  
FLOORING IN LIVING  
AREAS (CARPET IN  
BEDROOMS)

TWO-TONE PAINT

ECO BEE  
THERMOSTATS

KEYLESS ENTRY  
LOCK

*\*IN SELECT UNITS*



# STUDIO FLOOR PLANS



E1
STUDIO
462 SQFT



E2
STUDIO
482 SQFT



E2 HC
STUDIO
485 SQFT



# 1-BEDROOM FLOOR PLANS



**A1**

1 BD / 1 BA

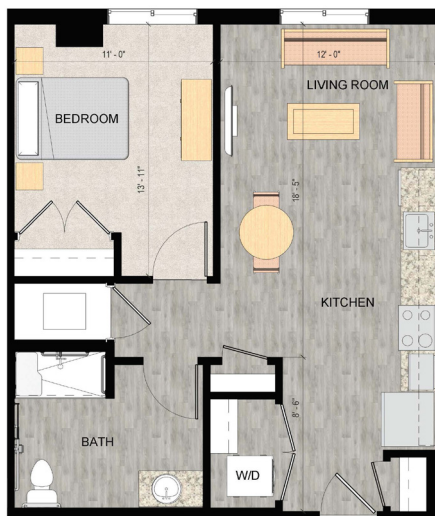
571 SQFT



**A2**

1 BD / 1 BA

633 SQFT



**A3 HC**

1 BD / 1 BA

636 SQFT



## A 3D architectural rendering of a modern apartment floor plan, viewed from an isometric perspective. The apartment is divided into two main sections by a central hallway. The left section features a bedroom with a large bed, a desk area, and a bathroom. The right section features a bedroom with a large bed, a desk area, and a bathroom. The central area includes a living room with a sofa and a round coffee table, a dining area with a square table and four chairs, and a kitchen area with a countertop and a small potted plant. The rendering shows the layout of rooms, furniture, and fixtures, providing a clear visual representation of the apartment's design.

2 BD / 2 BA  
720 SQFT



2 BD / 2 BA

---

850 SQFT



2 BD / 2 BA  
677 SQFT



2 BD / 2 BA  
720 SQFT



# 2-BEDROOM FLOOR PLANS



**B2**

2 BD / 2 BA

850 SQFT



**B3**

2 BD / 2 BA

970 SQFT



**B4**

2 BD / 2 BA

908 SQFT



**B5**

2 BD / 2 BA

1,019 SQFT

# 3-BEDROOM FLOOR PLANS



**C4 HC**

3 BD / 2 BA

1,092 SQFT



**C2**

3 BD / 2 BA

1,169 SQFT



**C3**

3 BD / 2 BA

1,135 SQFT



**C1**

3 BD / 2 BA

1,345 SQFT



NOTES

NOTES



SCHEDULE YOUR  
PERSONALIZED TOUR TODAY

**301.678.9747**

50 MONROE PLACE  
ROCKVILLE, MD 20850  
[LIVINGATMAINSTREET.COM](http://LIVINGATMAINSTREET.COM)

