

# 300 N. LARCH STREET

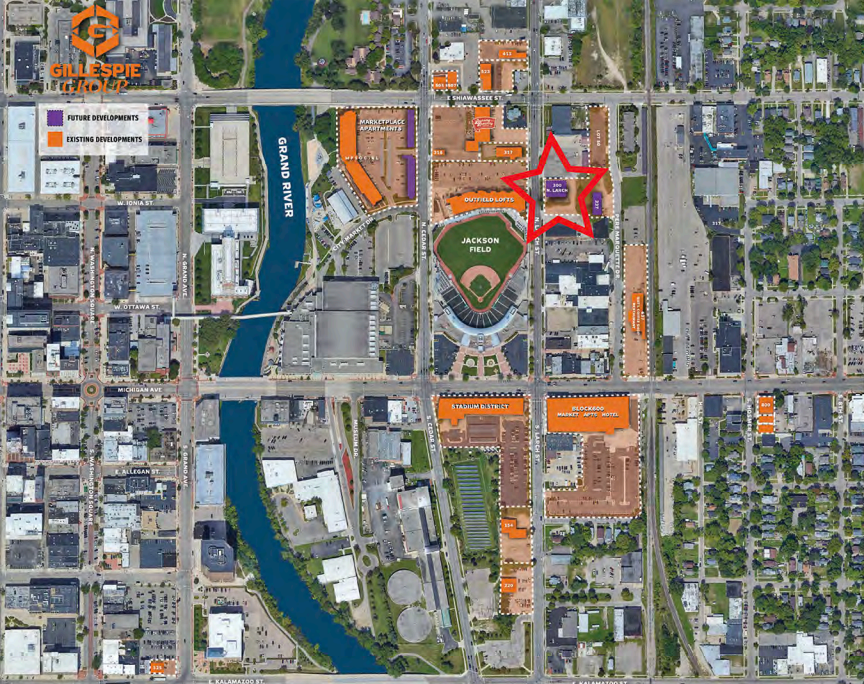


**AVAILABLE SPACE  
FOR LEASE  
UP TO: 14,000 SF**



**GILLESPIE  
GROUP**

*Renderings are for inspirational and discussion purposes only*



**JOIN THE GROWTH AND ENERGY OF THE THRIVING STADIUM DISTRICT TODAY!**

## PROPERTY INFO

- Up to 14,000 Square Feet of available space
- New exterior facade and windows part of proposed renovations
- Interior designed to accommodate tenant needs
- Ample surface doorstep parking spaces
- Prominent street and building signage available
- One block north of the gamechanger BLOCK600
  - Capital City Market by Meijer
  - Courtyard by Marriott hotel
- Surrounded by 15+ bars and restaurants
- Footsteps away from Jackson Field, Lansing River Trail and Lansing Center
- Easy access to I-496
- Close proximity to the Michigan State Capitol: 0.5 miles

## RENTAL RATES

- To Be Discussed

## CONTACT

**MEGAN WEBER**  
 Leasing & Business Development Manager  
 517.333.4123  
 mweber@gillespie-group.com

**GILLESPIE-GROUP.COM**



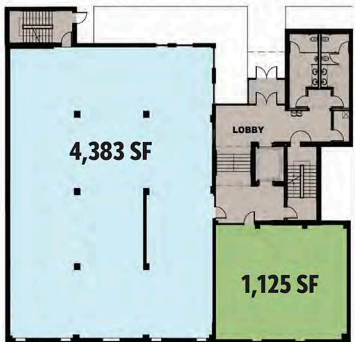


**JOIN THE ENERGY  
OF LANSING'S FASTEST  
GROWING DISTRICT TODAY!**



**STADIUM  
DOWNTOWN LANSING  
DISTRICT**

# FIRST FLOOR



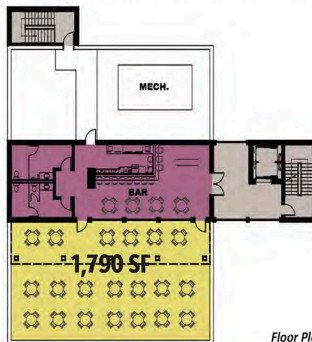
# SECOND FLOOR



# LOWER LEVEL



# ROOFTOP



**GILLESPIE  
GROUP**

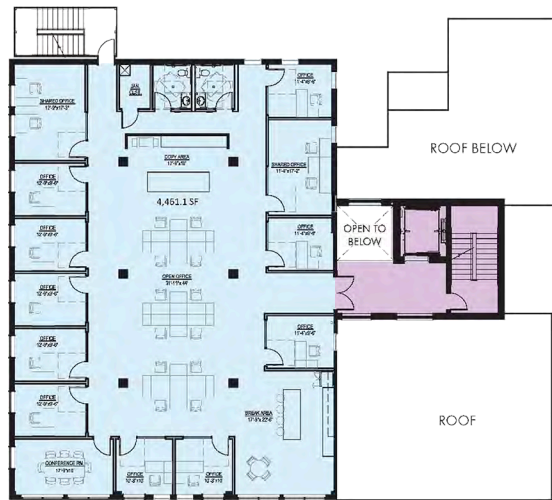
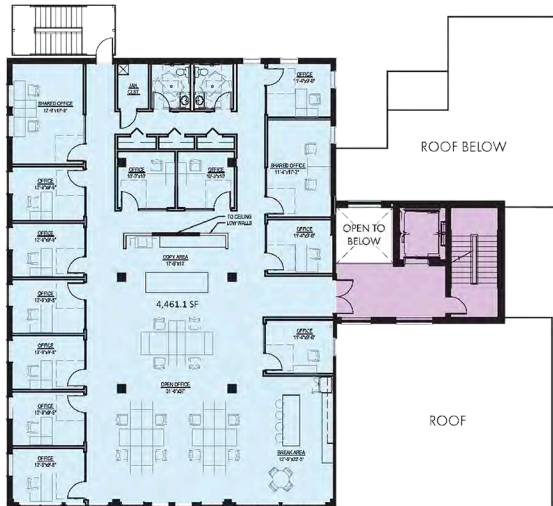
# CONCEPTUAL OFFICE FLOOR PLANS FIRST FLOOR



**GILLESPIE  
GROUP**

*Floor Plans are for inspirational and discussion purposes only*

# CONCEPTUAL OFFICE FLOOR PLANS SECOND FLOOR



**GILLESPIE  
GROUP**

# SITE PLAN

← PERE MARQUETTE →



← NORTH LARCH →

EAST ↑

Site Plan is for inspirational and discussion purposes only