

**123 E. KALAMAZOO STREET, LANSING, MI**

**AVAILABLE FOR LEASE**

**NOW LEASING: 630 SF**



## PROPERTY INFO

- 630 SF
- Onsite parking available
- Highly visible building on the corner of Kalamazoo Street and Grand Avenue
- Excellent street frontage for retail or office
- Surrounded by unique talent, restaurants, arts and entertainment
- Five-minute walk to all Downtown Lansing amenities
- Close proximity to the Michigan State Capitol: 0.4 miles or 8 minute walk
- Large employers in the area include State of Michigan, Accident Fund, Lansing Community College, Neogen Corporation, and Sparrow Hospital
- Easy access to I-496

## CONTACT

### MEGAN WEBER

Real Estate Coordinator  
517.333.4123  
mweber@gillespie-group.com

**GILLESPIE-GROUP.COM**



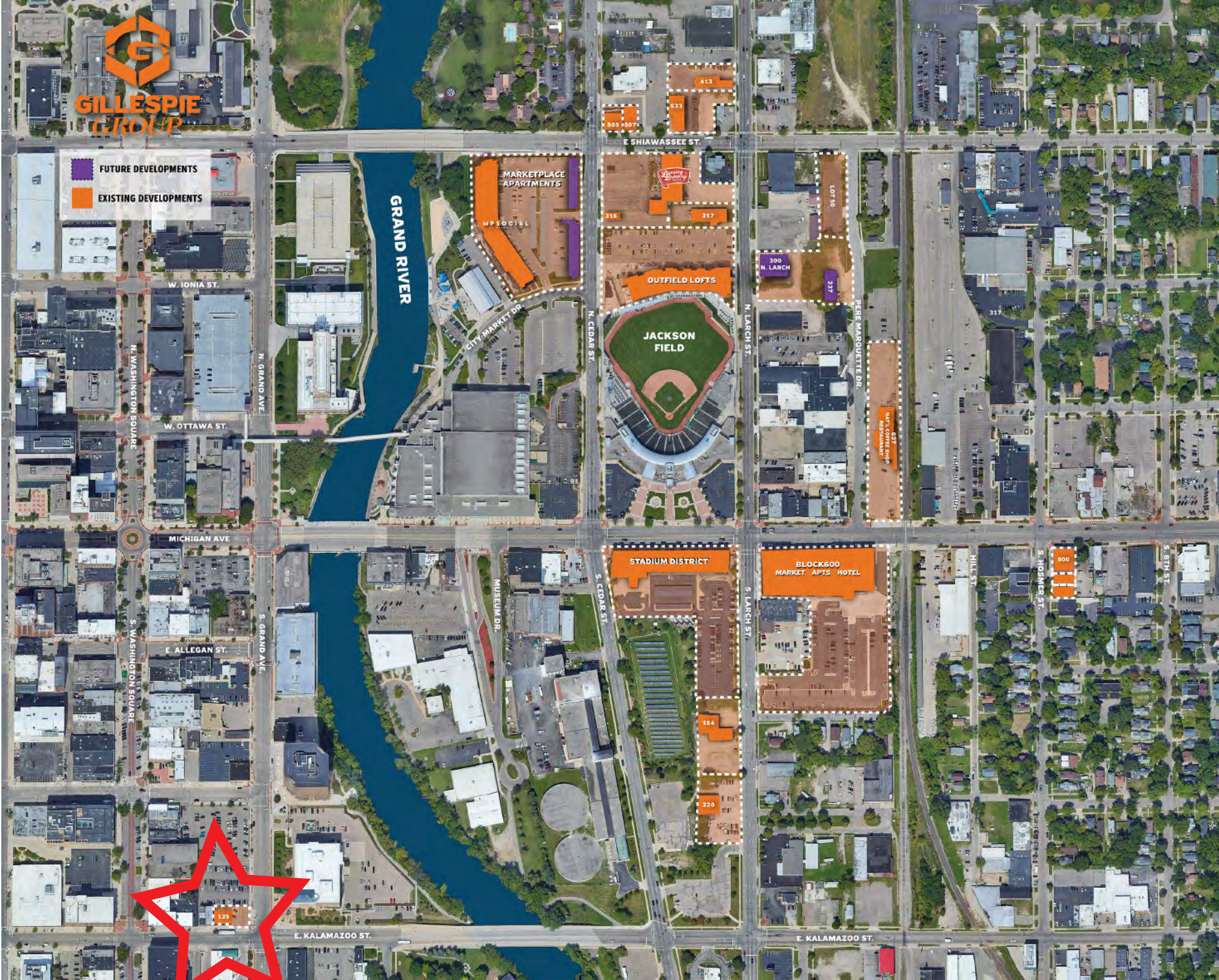
**GILLESPIE  
GROUP**



**123 E. KALAMAZOO STREET, LANSING, MI**

**AVAILABLE FOR LEASE**  
**NOW LEASING: 630 SF**

**AERIAL MAP AND EXTERIOR PHOTO**



**CONTACT MEGAN WEBER**  
Real Estate Coordinator  
517.333.4123  
mweber@gillespie-group.com

**GILLESPIE-GROUP.COM**  
**GILLESPIE GROUP**