



GILLESPIE
GROUP

220 S. LARCH STREET

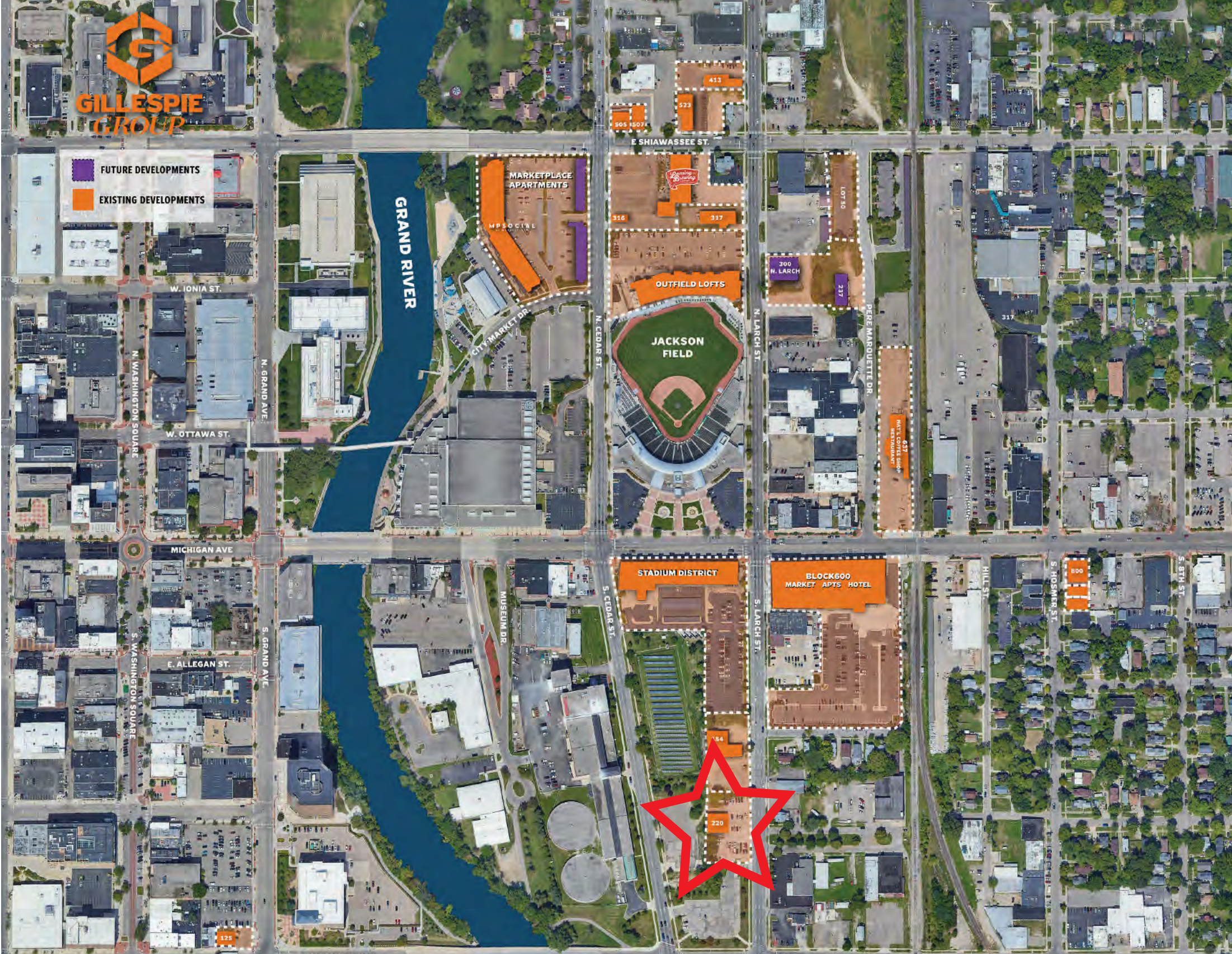
**AVAILABLE SPACE
FOR LEASE
3,864 SF**





GILLESPIE GROUP

FUTURE DEVELOPMENTS
EXISTING DEVELOPMENTS



PROPERTY INFO

- 3,864 Square Feet of available space
- Open light industrial/warehouse space
- Overhead garage door
- Ample onsite parking
- Prominent street signage available
- Easy access to I-496
- Directly across from the gamechanger BLOCK600
 - Capital City Market by Meijer
 - Courtyard by Marriott hotel
- Surrounded by 15+ bars and restaurants
- Footsteps away from Jackson Field, Lansing River Trail and Lansing Center
- Close proximity to the Michigan State Capitol: 0.5 miles

RENTAL RATE

- As Is Delivery - \$5,500/month

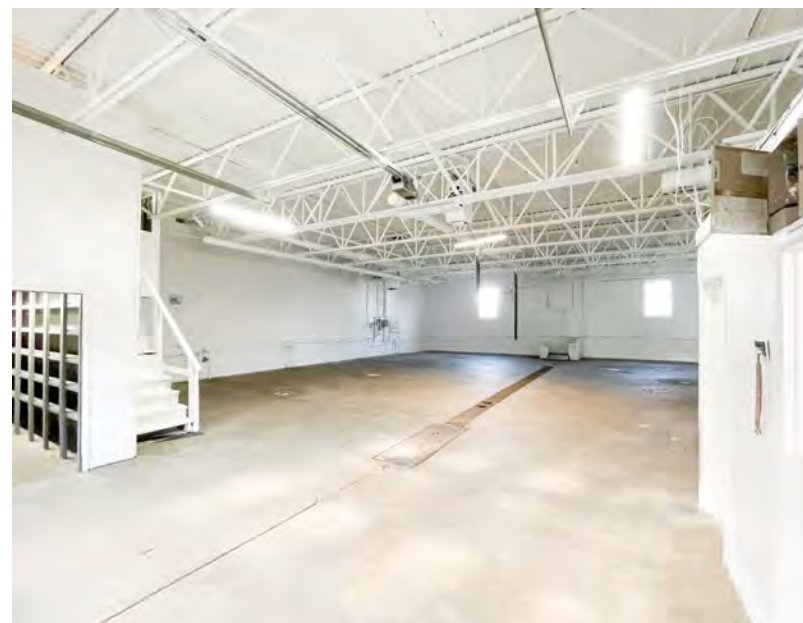
CONTACT

PATRICK T. GILLESPIE
 Business Development Analyst
 517.333.4123
 ptgillespie@gillespie-group.com

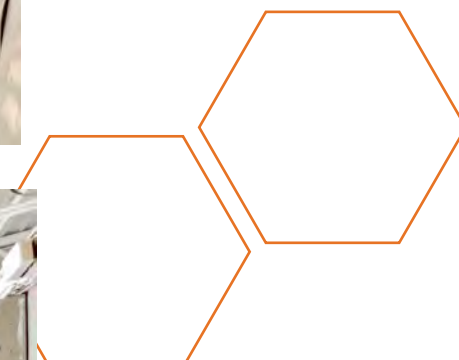
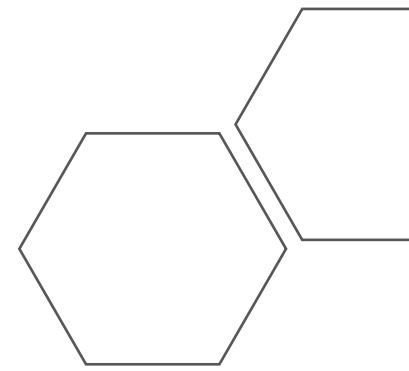
JOIN THE GROWTH AND ENERGY OF THE THRIVING STADIUM DISTRICT TODAY!

GILLESPIE-GROUP.COM





INTERIOR PHOTOS



CONTACT

PATRICK T. GILLESPIE

Business Development Analyst

517.333.4123

ptgillespie@gillespie-group.com

GILLESPIE-GROUP.COM



**JOIN THE ENERGY
OF LANSING'S FASTEST
GROWING DISTRICT TODAY!**



**STADIUM
DOWNTOWN LANSING
DISTRICT**