

**FOR
LEASE**
1,733 SF



PATRICK T. GILLESPIE

Business Development Analyst
ptgillespie@gillespie-group.com
517-333-4123

CONTACT US

330 Marshall St. Suite 100
Lansing, MI 48912
517-333-4123
gillespie-group.com

JASON KILDEA

Vice President of Development
jkildea@gillespie-group.com
517-333-4123



FOR LEASE

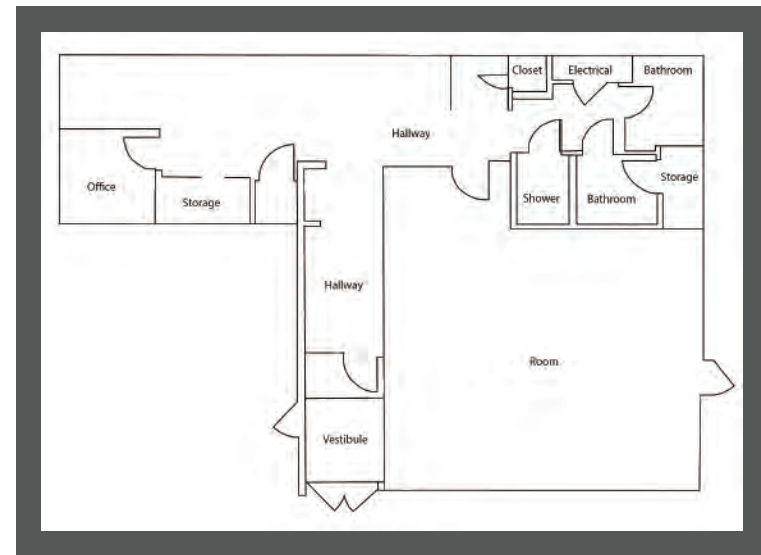
1306 E. MICHIGAN AVE, EAST LANSING, MI 1,733 SF

PROPERTY DETAILS

- Location:** 1306 E. Michigan Ave, East Lansing, MI 48823
- Lease Rate:** \$20.00/SF, NNN
- Information:**
- Prime retail location across from Michigan State University (50,351 students)
 - Surrounded by an abundance of student housing units
 - Excellent street exposure (19,115 AADT)
 - Ample amount of on-site parking
 - Conveniently located 1/4 mile off I-127
 - Located near Frandor Shopping Center
 - Close promixatly to over 150 multi-family units and 120 senior housing units

DESCRIPTION

Situated on the high traffic corridor of East Michigan Avenue, this retail center is conveniently located close to downtown Lansing, downtown East Lansing, Midtown apartments (66 units), MSU campus (Spartan Stadium, Breslin Center, and the Eli Broad Art Museum), boasting an impressive daily traffic count. Located east of Frandor Shopping Center, tenants are within close proximity to a variety of top national retailers and restaurants.



SITE DISTANCE TO
MICHIGAN STATE UNIVERSITY: 600 YARDS
FRANDOR SHOPPING CENTER: 700 YARDS
DOWNTOWN EAST LANSING: 1 MILE

FRANDOR SHOPPING CENTER

JOANN
petco
Bank of America
TJ-maxx
QDOBA MEXICAN EATS
Kroger
BLAZE PIZZA
Panera BREAD
Guitar Center
Michaels
HomeGoods

Feeder's
Pet Supply

AC HOTEL MARRIOTT
WINE MARKET CUCINA
TROPICAL SMOOTHIE CAFE
Hooked FENG CHA
The OLD BAG of NAILS PUB

B
BROGUE COFFEE

SITE

PNC

DUNKIN' DONUTS
Domino's

MICHIGAN STATE UNIVERSITY