

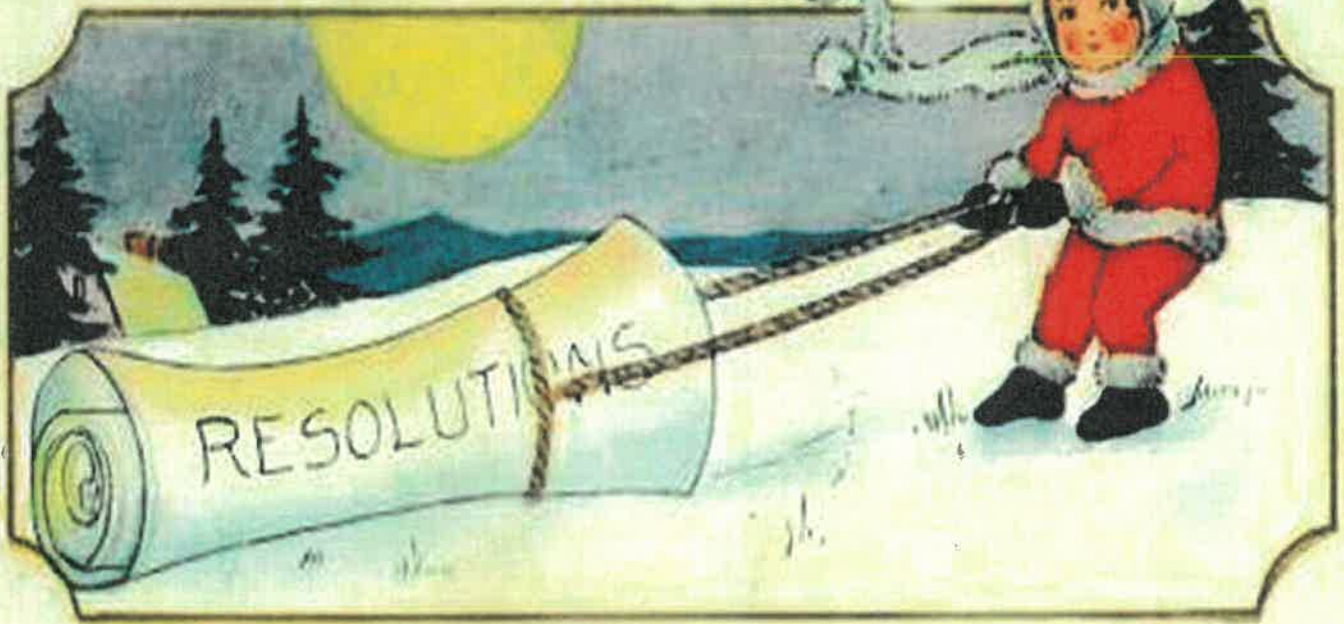
Village Newsletter

January 2024



Bringing independence to living and quality to life

A Happy New Year



*A very Happy New Year's Day, twelve months of gladness too,
and a heart of cheer, a sunlit way, with the best of luck for you*

HOLIDAY EVENTS



Just 4 Fun Band





Ridgeview High School Jazz Band








Line Dancing with Joyce from the Redmond Senior Center



January 2024

SUNDAY MONDAY TUESDAY WEDNESDAY THURSDAY FRIDAY SATURDAY

	* January Anytime * Hot Tea Day		Fruitcake Toss Day		National Bird Day	Epiphany
7	Elvis Presley's Birthday		Bittersweet Chocolate Day Houseplant Appreciation Day	11		National Rubber Duckie Day
14	Martin Luther King Jr. Birthday – National Bagel Day National Hat Day	16	Appreciate a Dragon Day	17	Sundance Film Festival	Inauguration Day
Hug Day		National Pie Day	Compliment Day	Robert Burns Day	Australia Day	Big Garden Birdwatch Mozart's Birthday
Jackson Pollock's Birthday Lego Day			Backward Day			



People's Rights Group





Crafts with Macaela (pictured) Sandy, Bonnie, Janice & Katy



Wreaths are ornamental arrangements that can be found in homes throughout the year; however, for many, they are a seasonal decoration, and the holiday most widely associated with wreaths is Christmas. While they can be made of almost anything, Christmas wreaths are most often made of fresh greenery and seasonal flowers. During this season, they are generally either placed flat on a surface for use as an Advent wreath or hung on one's wall or front door.





Square dancing with Debbie K and friends





The Village presents Sean Alan and his bassist Kelli Brooks



Holiday Stocking Project of Central Oregon brings joy to our residents



Ester Barnes delivers the stockings



Lola



Cindy



Paula



Kathy



Audrey



Janice



Christmas SPIRIT WEEK



Scarf Day

Maddison Office Manager

Bonnie



Debbie LEC

Nancy

Nancy Diane Care Staff & Sandy



Jingle Bell Day

Sandy & Nancy

Judy

Jeni E.D.



Janice

Kathy



Christmas Lunch



Janice, Donna, Mary & Carol



Kathy, Nancy, Sandy & Sister



Audrey & Bonnie



Community



Judy, Violet, Paula & daughter



Tim, Julie, Denny



Marcia, John



Claudia, Kent & Denny

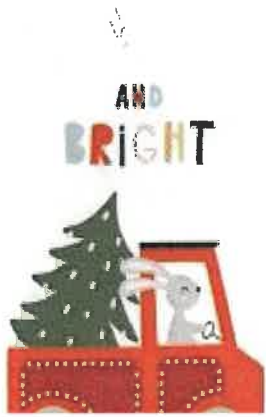


Steve, Rusty, John



Tyla, Jerry & Kris





Seeing Christmas Lights through town

Frank our beloved maintenance man (our tour guide)



Tyla, Janice & Denny



Donne, Nancy, Judy, Mary, Steve & Rusty





Diane, Becca care staff, Shelly Dietary & Grandma Toni



Eliza care staff



Cody care staff



Courtney Housekeeping



Ruben Dietary Manager



Debbie LEC



Jeni E.D.



Jacky RCC



Frank Maintenance Director



Randy Community Relations.



Shirley Beautician



Paula, Kent & Jackie



Bonnie



Santa Himself



Community Christmas



Judy



Carol & Mary



Jacky C. 1-4 Rm 117

Patty 1-19 Rm 119





Mondays Walmart Shopping 9:00 a.m.
 Tue. Wed. Thur. Fri Yoga 9:30 2nd Floor
 Tue. Fran & Judy 10:00 a.m. 2nd floor
 Tue. Movie Matinee 1:30 p.m. Dining Room
 Wed. Bingo 1:00 p.m. 2nd Floor
 Wed. Happy Hour & Family Feud 2:30 p.m. dining Room



Fri 1-5 Resident Council 10:00 a.m. 2nd Floor
 Fri 1-5 Activity Meeting with Debbie LEC 10:00 a.m. 2nd Floor
 Fri 1-12 Resident Forum with Jeni E.D. 10:00 a.m. 2nd floor
 Wed 1-17 Dietary Meeting with Ruben Diet. Manger 10:00 a.m. 2nd Floor

Please see your monthly calendar for activities. Also at the beginning of each hall and the elevator, please watch for flyers. I will post changes and additions to the activity calendar. If you have any questions please see Debbie. As always everyone is welcome to participate in activities or go on the bus outings. We go out for lunches and bus rides. Destinations will happen according to the weather. Now that winter is upon us we want you to be safe and need to choose where we go wisely. Thank you for your understanding.

Debbie

YOU KNOW YOU'RE OLD WHEN...

By Rose-Mary Rumbley



You know you're old when you can call the names of THE ANDREW SISTERS! They are Patty, Lavern, and Maxine, and they ruled the air waves of radio and the Silver Screen of the 1940's. Yes, they did perform later on TV, but they were the favorite singing trio of the war years! Who could forget BOOGIE WOOGIE BUGLE BOY FROM COMPANY B?

In fact, I got the idea for this article in my exercise class here at the Tradition. We have this great exercise leader, Johnny Tan, who plays all of the old tunes for us as we stretch, pull and stomp, and his favorite is BOOGIE WOOGIE BUGLE BOY.

There was a singing girl trio before the Andrew Sisters from New Orleans, THE BOSWELL SISTERS, whose big hit of the 30s was WHEN I TAKE MY SUGAR TO TEA. This tune had a jazzy feel to it, so the trio and the song became very popular. And too, this trio introduced close harmony to the listening audience.

But coming from the Midwest of our country were a terrific teen age trio, THE ANDREW SISTERS. Patty was the lead singer, and the other two came in with perfect harmony.

They started entertaining audiences in local theatres between the showings of a movie.

Vaudeville was still clinging on! Because they were loud and brassy, they became a hit with all who heard them. Then came RADIO! They were loved as much as the big bands that captured the hearts of the American people.

Then the war came and big bands and the Andrew Sisters were the favorites of the GIs.

The country got through World War II humming with the sisters DON'T SIT UNDER THE APPLE TREE WITH ANYONE ELSE BUT ME, RUM AND COCA COLA, AND THE BEER BARREL POLKA, to name just a few of their hits.

They were in a lot of movies, not as stars, but as a singing trio. Somewhere in the movie, they would make an appearance. Maybe it was with Bud Abbott and Lou Costello or Carman Maranda...whoever it was, the star welcomed the Andrew Sisters.

They broke up again because of "money." What else causes trouble? They got together again, but, they realized their time had passed, so they left show biz!

All three adopted children and lived a great life after retirement. In all the years, they managed to record over 600 songs, and we, their fans sang along with them.

Laverne died first at age 55 years. Maxine was 79 when she died. They are buried together in Los Angeles. Patty lived to be 94 years old. She was the rebel, always wanting to sing solo. Thus she is buried in Los Angeles, but in another cemetery--not with her sisters.

They sang close harmony, but they did not have a close relationship.

Pastor Reeves and Rich his music director of the Redmond Heights Pentecostal Church. Thank you Pastor Reeves and Rich for giving of your time freely. The Sunday Church service has grown from 2-3 people to last Sunday of 14. Sunday Church services begin at 3:00 p.m. and is held on the 2nd floor by the T.V. setting area. Come join us





© 2010 Pearson Education, Inc.

New Year's Word Search

J A N U A R Y F R I E N A C E
 F R I E N D S Y A S R I L A H
 N E Y S E R T I E M O W B L C
 B S I L Y F A E N E I Y A E O
 N O C R N V N V E Y D L B N U
 A L D C L O C K L T I E Y D N
 R U V E W M I D N I G H T A T
 V T O A S T W S N O L Y I R D
 G I A N I N G S E V E U A R O
 C O N F E T T I T M I N G S W
 R N O L C E L E B R A T I O N
 A J A N U E L V E I M K E R A
 Y P A R T Y H A A P Y S E V W
 N E W Y E A R C L O K S O R Y
 S H A P P Y E B A L L R E S O

BABY
 BALL
 CALENDAR
 CELEBRATION
 CLOCK
 CONFETTI
 COUNTDOWN
 EVE

FAMILY
 FRIENDS
 HAPPY
 JANUARY
 MIDNIGHT
 NEW YEAR
 NOISEMAKER
 PARTY

RESOLUTION
 TOAST



CRAYONSANDCRAVINGS.COM



BY DEAN KELLEY & JOHN MARSHALL



HHMM...

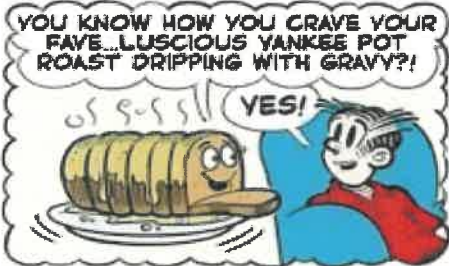


I WONDER WHAT HE'D LIKE TONIGHT



WHAT WOULD YOU LIKE FOR DINNER, SWEETHEART?

DMGH??
I UHH...MM
Z Z Z...



YOU KNOW HOW YOU CRAVE YOUR FAVE...LUSCIOUS YANKEE POT ROAST DRIPPING WITH GRAVY?!

YES!



AHEM...DAG, WHAT AM I, DAG, CHOPPED LIVER? I THOUGHT I WAS YOUR FAVE!

WELL, YOU ARE, TOO!

4-12



LEGGO, YOU CHEAP FLASH-IN-THE-PAN ROAST!

HE'S MINE, YOU CHICKEN-LEGGED FREAK!!

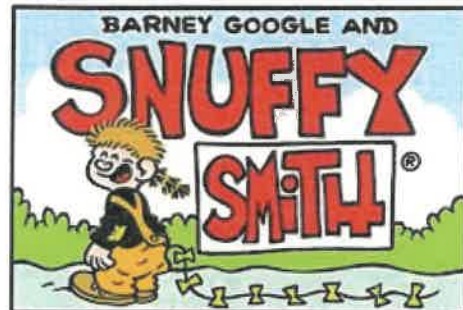
YEOW!!



HOW SOON YOU FORGET YOUR OL' STANDBY...SPICY PULLED PORK!!



WHADYA SAY WE JUST HAVE GRILLED CHEESE SANDWICHES TONIGHT?!



BARNEY GOOGLE AND

SNUFFY SMITH



I WISH I COULD FLY LIKE A BIRD !!

YEAH !! ME TOO !!



LONG'S I WOULDN'T HAFTA EAT LIKE ONE !!



WHOA !! HOLD ON THAR, BOYS !!



THAT KITE'S A MITE BIG !! I THINK YA BEST GO GIT A SMALLER ONE !!



WIF THESE WINDS YO'RE APT T'GIT PICKED UP AN' CARRIED OVER TO TH' NEXT RIDGE !!



DANG !! I THINK SHE'S ONTO US !!

