



**LEASING OFFICE**

2222 GRAYCLIFF DRIVE  
DALLAS, TX 75228

**HOURS**

Mon 8:30AM - 5:30PM  
Tue 8:30AM - 5:30PM  
Wed 8:30AM - 5:30PM  
Thu 8:30AM - 5:30PM  
Fri 8:30AM - 5:30PM  
Sat 10:00AM - 2:00PM  
Sun CLOSED



**PARKING**

**PARKING TYPE**

SURFACE LOT

**PARKING ASSIGNMENT**

NO

\*Contact our leasing office for parking policy



**PET POLICY**

**PETS ALLOWED**

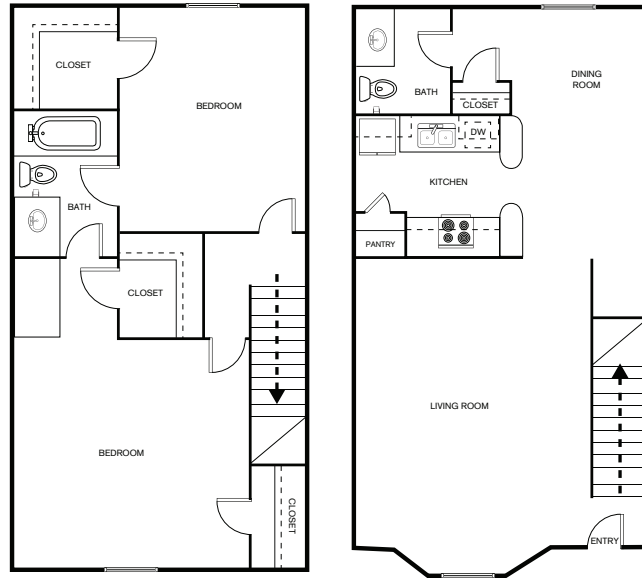
✓ YES

**PET POLICY TYPE**

CAT, DOG

**MAX PETS**

2



**B6**

**2 BEDROOM, 1.5 BATH  
SQ FT: 1,170 SQ FT**

**APARTMENT FEATURES**

- ✓ Ceiling Fan
- ✓ Garbage Disposal
- ✓ Linen Closet
- ✓ Built-In Bookshelves
- ✓ Townhouse Style Floor Plans
- ✓ Storage Closet On Patio Balcony
- ✓ Full-Size W/D Connections\*
- ✓ Walk-In Closet

\*Available in select units

**COMMUNITY FEATURES**

- ✓ Beautiful Renovations Underway
- ✓ New Online Resident Portal
- ✓ Assigned Parking Available
- ✓ Covered Parking Available
- ✓ On-Site Maintenance
- ✓ On-Site Management
- ✓ Additional Storage
- ✓ Dog Park
- ✓ Pet Friendly
- ✓ 2 Swimming Pools
- ✓ Playground
- ✓ Laundry Center
- ✓ Near Public Transit
- ✓ Open Greenspace
- ✓ Outdoor Grilling Area
- ✓ Balcony/Patio

