



LEASING OFFICE

2222 GRAYCLIFF DRIVE
DALLAS, TX 75228

HOURS

Mon 8:30AM - 5:30PM
Tue 8:30AM - 5:30PM
Wed 8:30AM - 5:30PM
Thu 8:30AM - 5:30PM
Fri 8:30AM - 5:30PM
Sat 10:00AM - 2:00PM
Sun CLOSED



PARKING

PARKING TYPE

SURFACE LOT

PARKING ASSIGNMENT

NO

*Contact our leasing office for parking policy



PET POLICY

PETS ALLOWED

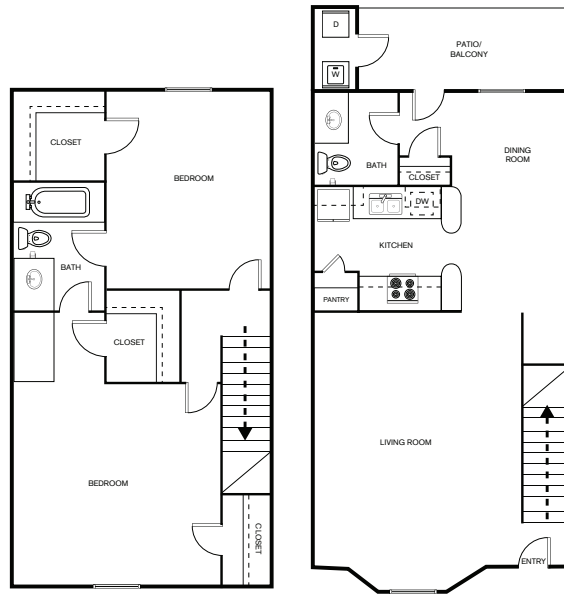
✓ YES

PET POLICY TYPE

CAT, DOG

MAX PETS

2



B5

**2 BEDROOM, 1.5 BATH
SQ FT: 1,170 SQ FT**

APARTMENT FEATURES

- ✓ Ceiling Fan
- ✓ Garbage Disposal
- ✓ Linen Closet
- ✓ Built-In Bookshelves
- ✓ Townhouse Style Floor Plans
- ✓ Storage Closet On Patio Balcony
- ✓ Full-Size W/D Connections*
- ✓ Walk-In Closet

*Available in select units

COMMUNITY FEATURES

- ✓ Beautiful Renovations Underway
- ✓ New Online Resident Portal
- ✓ Assigned Parking Available
- ✓ Covered Parking Available
- ✓ On-Site Maintenance
- ✓ On-Site Management
- ✓ Additional Storage
- ✓ Dog Park
- ✓ Pet Friendly
- ✓ 2 Swimming Pools
- ✓ Playground
- ✓ Laundry Center
- ✓ Near Public Transit
- ✓ Open Greenspace
- ✓ Outdoor Grilling Area
- ✓ Balcony/Patio

