



**LEASING OFFICE**

1665 DOGWOOD PLACE  
PENSACOLA, FL 32506

**HOURS**

Mon 8:30AM - 5:30PM  
Tue 8:30AM - 5:30PM  
Wed 8:30AM - 5:30PM  
Thu 8:30AM - 5:30PM  
Fri 8:30AM - 5:30PM  
Sat CLOSED  
Sun CLOSED



**PARKING**

**PARKING TYPE**

SURFACE LOT

**PARKING ASSIGNMENT**

NO



**PET POLICY**

**PETS ALLOWED**

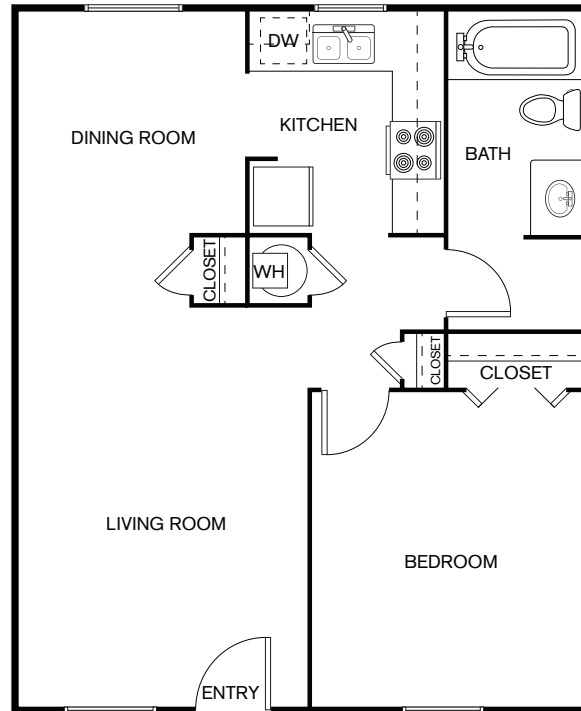
✓ YES

**PET POLICY TYPE**

CAT, DOG

**MAX PETS**

2



**A1**

**1 BEDROOM, 1 BATH**  
**SQ FT: 667 SQ FT**

**APARTMENT FEATURES**

- ✓ Wood-Inspired Flooring\*
- ✓ Fully-Equipped Kitchens
- ✓ Walk-In Closets\*
- ✓ Upgraded Interiors\*
- ✓ Overhead Lighting
- ✓ Washer/Dryer Connections
- ✓ Air Conditioning
- ✓ Patio/Balcony
- ✓ Courtyard View\*

\*Available in select units

**COMMUNITY FEATURES**

- ✓ Clothes Care Center
- ✓ On-Site Maintenance
- ✓ Picnic & Grill Area COMING SOON
- ✓ On-Site Management
- ✓ Online Resident Portal
- ✓ Dog Park COMING SOON

