

Nº  
8  
COURT  
SQUARE





Inspired by its landmarked surroundings, 8 Court Square, a contemporary classic, offers premium boutique rental residences in the heart of Long Island City.



#### LONG ISLAND CITY COURT HOUSE AND COURT SQUARE PARK

Ideally situated opposite the beautifully landscaped Court Square Park and iconic Long Island City Courthouse, the entrance to 8 Court Square is placed on Thomson Avenue, a peaceful residential street that promises tranquil arrivals and departures. This prime location is just one block from vibrant retail destinations and multiple transportation options along Jackson Avenue. The Court Square subway station is less than a minute away, providing one-stop access to midtown Manhattan.

## AMENITIES

With nearly 14,000 square feet of indoor and outdoor amenities, 8 Court Square provides ample opportunities for residents to relax, stay connected to the office, and enjoy the company of friends and neighbors. With a double-height, dedicated amenity floor, and two expansive outdoor spaces, 8 Court Square brings the exclusivity of boutique-scale living together with a lifestyle typically available only in larger buildings.

### LOBBY

Elegantly appointed, double height lobby with 24/7 concierge

### CLUB LOUNGE

Club-style residential living room offers multiple welcoming seating zones from which to work, entertain, enjoy the fireplace or watch tv

### CLUB TERRACE

Expansive terrace with tree-encircled natural grass lawn, areas for grilling, dining and relaxing by the indoor-outdoor fireplace

### CO-WORKING LOUNGE AND PRIVATE DINING ROOM

Reservable catering kitchen with private indoor/outdoor dining room also serves as co-working lounge with large communal work table and adjacent private conference rooms

### FITNESS CENTER

State-of-the-art fitness center features the latest strength and cardio equipment, including Peloton bikes and on-demand mirror virtual fitness system flowing into a private workout studio and outdoor fitness terrace

### GAME LOUNGE AND MULTI-SPORT SIMULATOR ROOM

Game room with billiards table and tv watching zone next to the state of the art multi-sport simulator

### ROOFTOP TERRACE

Landscaped terrace with panoramic views, grilling and dining area, sun deck, and shaded seating





LOBBY

A serene welcome home, a place to catch your breath.



CLUB LOUNGE

Work from home, relax with friends, open the door for a breath of fresh air.



CO-WORKING LOUNGE AND PRIVATE DINING ROOM

Lead a working session, host an indoor-outdoor private party.



CLUB TERRACE





CLUB TERRACE

Relax on freshly mown lawn, gaze up at the sky, grill an evening feast.



## GAME LOUNGE

Meet up with friends for billiards, refreshments, or to watch a game.



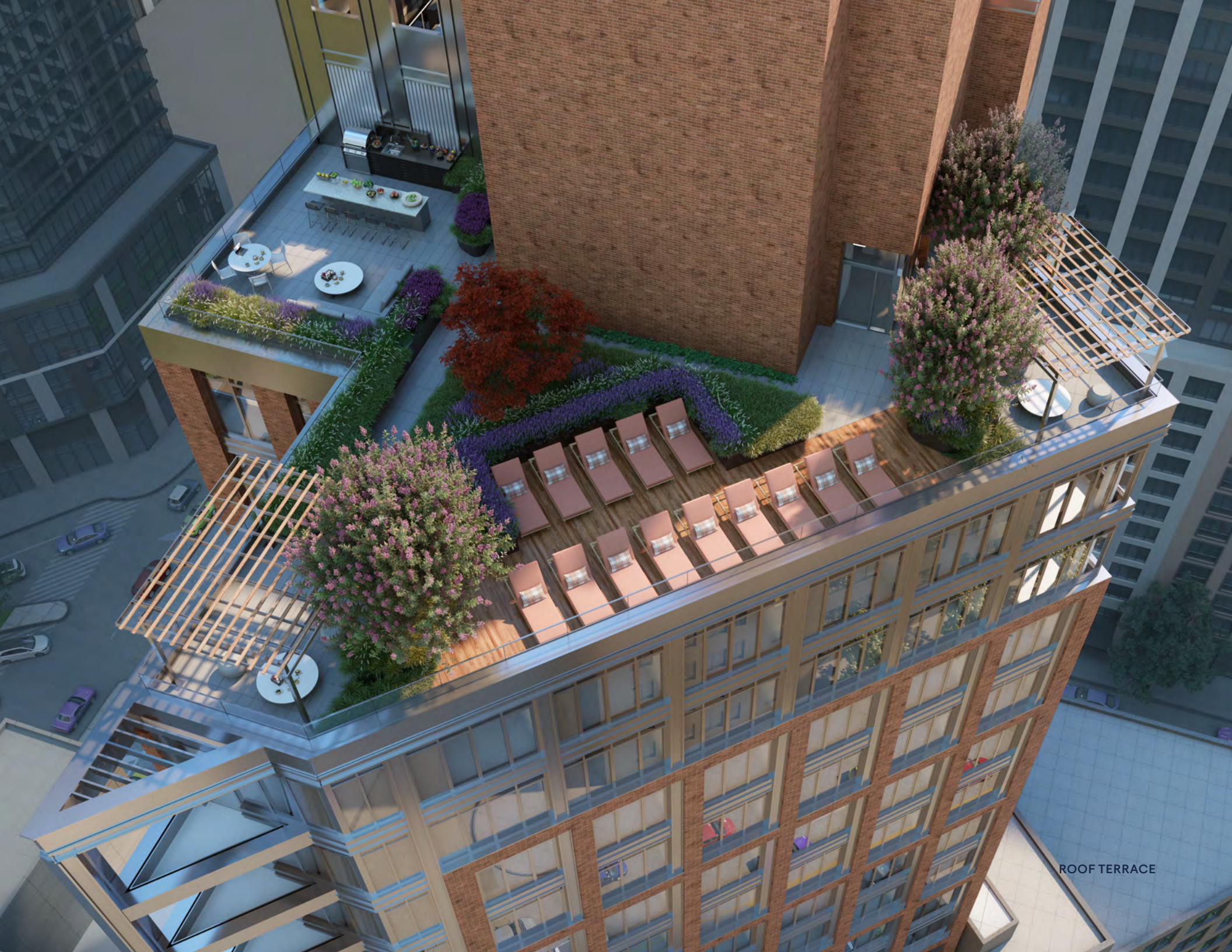
## MULTI-SPORT SIMULATOR

Hone your skills virtually in an immersive environment or invite friends for a collegial competition



FITNESS CENTER

Enjoy the spacious, light filled fitness center.



ROOF TERRACE



ROOF TERRACE

Revel in sweeping Manhattan and Queens skyline views that surround the private rooftop terrace.

JACKSON AVENUE

### 3RD FLOOR CLUB AMENITIES



## RESIDENCES

With sophisticated, condominium-level finishes, the residences at 8 Court Square are thoughtfully designed and crafted with care. The highest quality natural finishes, contemporary fixtures, and premium appliances, as well as custom cabinetry, are among the premium offerings. With plentiful light and air, each residence is a serene, private oasis, with expansive views of Long Island City and beyond, or the picturesque Court Square Park.

## HIGHLIGHTS

9 foot plus high ceilings (over 10 foot high ceiling in select residences) with expansive floor-to-ceiling windows

Private outdoor terraces in many residences

Oak wood floors throughout

Bosch washer/dryer in every residence

Walk-in closets in most residences, including all studios

Whisper quiet, individually tenant-controlled, central heating and air conditioning system

Keyless entry with Dormakaba smart technology

## KITCHEN

Elegant custom cabinetry, quartz countertops and ribbed charcoal tile backsplash

Fill-size stainless steel Blomberg appliances with gas range

Satin nickel fixtures

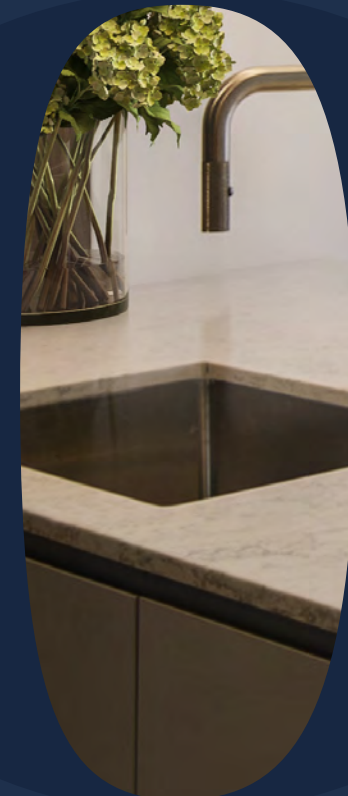
## BATHROOM

Oversized medicine cabinet with ample storage

Custom vanity with quartz countertop

Cast-iron tub and premium Signature fixtures

Recessed quartz shower niche





## KITCHEN

Sleek spacious kitchens are fully equipped with premium appliances, inspiring home-chefs to create imaginative cuisine.





## BATHROOM

The serene, calming palette offers a tranquil oasis.

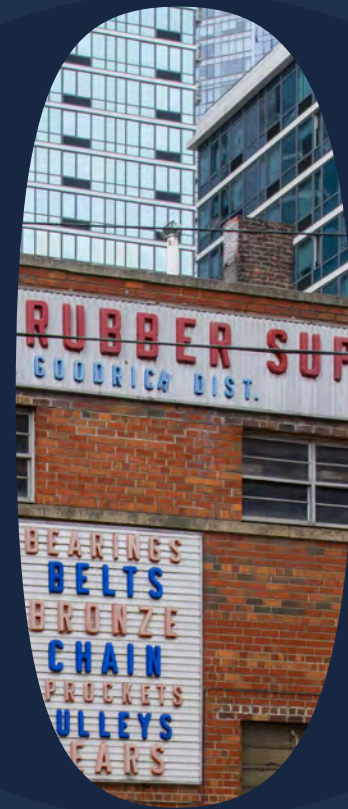


## BEDROOM

Light-filled bedrooms are peaceful retreats designed for total relaxation. Walk-in closets provide ample space for everything from designer outfits and sportswear to the comfiest athleisure for work-from-home days.

## NEIGHBORHOOD

Overlooking Court Square Park and the landmarked Long Island City Courthouse, 8 Court Square is anchored in the rich heritage of Long Island City. History meets modern life in the diverse and plentiful array of shopping, dining, culture, and entertainment options along Jackson Avenue ensuring that everyday needs and personal interests are easily satisfied. With the subway just one block away, there is unparalleled access to all parts of New York City.



**TIMELESS DESIGN  
MEETS MODERN LIFE**

In Long Island City, landmarked architecture and lush green space are interspersed with modern cultural icons, independent boutiques, and inviting restaurants.



LONG ISLAND CITY COURT HOUSE AND COURT SQUARE PARK



LEVANTE



BROOKS RESTAURANT, SINCE 1890



MOMA PS1

## AN ABUNDANCE OF CONVENIENCES

Whether you're looking for the latest delicious takeout, adrenaline-pumping experiences, or the perfect place for cocktails with friends, it's all at your doorstep.



FIFTH HAMMER BREWERY



COURT SQUARE STATION, ONE BLOCK AWAY



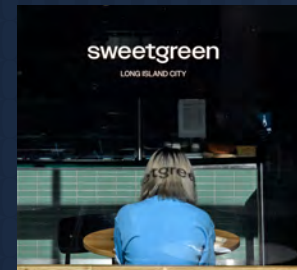
BOOK CULTURE



DUTCH KILLS BAR



MANHATTAN VIEWS FROM 44TH DRIVE



SWEETGREEN



THE CLIFFS

IN THE HEART OF LONG ISLAND CITY,  
MINUTES FROM MIDTOWN



# THE ULTIMATE CENTRAL LOCATION

With the Court Square subway station just one block away and Queensboro Plaza nearby, 8 Court Square offers peerless accessibility across New York City. Midtown is less than 15 minutes away by subway.



N°  
**8**  
**COURT**  
**SQUARE**

CONTACT

To schedule a tour,  
please contact  
917-503-9539  
8courtsq@roseapts.com  
**8COURTSQ.COM**

