

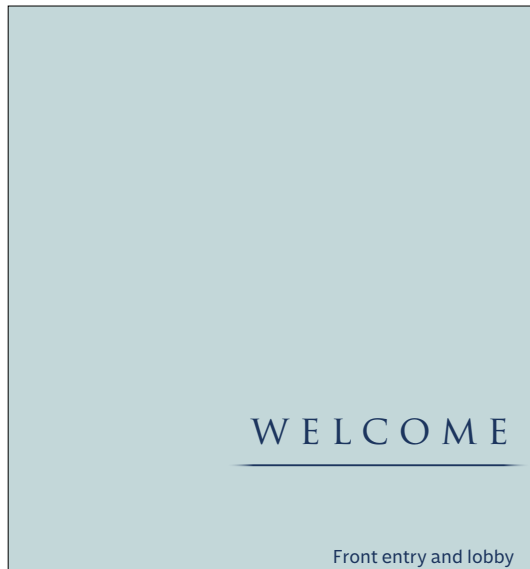


LEGACY  
LIVING  
FLORENCE

(OUR "WHY" IS SERVING THOSE YOU LOVE)



UNIQUE BECAUSE OF OUR CULTURE.



Front entry and lobby



Our inspiration for Legacy Living comes from this bright and inviting Florence community. Our team provides concierge-level amenities based on your choices and needs. To live life - is to stroll through our neighborhood with scenic views of Northern Kentucky and enjoy many local fine amenities. To love life - is to experience our inspired dining options and enjoy the companionship of family and friends.

8520 GUNPOWDER RD., FLORENCE, KY 41042  
859.534.2436  
[WWW.FLORENCESENIORLIVING.COM](http://WWW.FLORENCESENIORLIVING.COM)



INDEPENDENT  
LIVING  
ASSISTED  
LIVING  
MEMORY  
CARE



WHAT IS LEGACY'S 'WHY'?

To serve others in our community through Love, Compassion, and Outstanding Work Ethic. Directly or indirectly, making a positive impact on you and your loved ones' lives.

HOW DOES LEGACY PROVIDE SERVICES AND AMENITIES?

Serving each other and our residents go hand in hand, and we can't be great at one without the other!

WHAT ARE THOSE SERVICES AND AMENITIES?

Assisting our loved ones with their most intimate needs, delivering tasty dining experiences, providing fun life enrichment events, ensuring a clean and clutter-free home, and prompt response when you need us!

TOWN HOME  
LIVING

Open concept vaulted and tray ceilings give a spacious feel to each Town Home



Whether you are cooking a meal in your custom kitchen, relaxing in your living or sunroom, or reading a book on your porch, hilltop views of local amenities and wooded tree lines encircle you. Live independently with the peace of mind that you will enjoy all of the conveniences and amenities offered on our campus - including restaurant-style meals, planned activities, local outings, and a campus-wide emergency response system at your fingertips.

## INDEPENDENT & ASSISTED LIVING RESIDENCES

Outdoor patio area for events and entertaining



## ASSISTED LIVING



We offer multiple floor plan options to help our residents maintain maximum independence in a homelike environment. Our qualified personal care attendants are here around the clock to assist with any needs that arise.

## ASSISTED LIVING

Many open concept common spaces on every floor



## HEALTH & WELLNESS

When you need a helping hand, there is no task too small. Our wellness team will meet with you and your family to assess individual needs and then develop a customer person-centered care plan that fosters independence and self-esteem. Our expert caregivers focus on keeping you fit both mentally and physically and are available around the clock to assist with any needs that arise.

### THESE NEEDS INCLUDE:

- Medication self administration assistance & reminders
- Assistance with activities of daily living
- Toileting & incontinence care
- Dressing
- Bathing
- Transfers & ambulation assistance

### MISCELLANEOUS NURSING NEEDS INCLUDING BUT NOT LIMITED TO:

- TED hose application
- Oxygen maintenance
- Coordination of health-related appointments — with free local transportation
- Mental health monitoring

WE ARE REGULATED BY THE DEPARTMENT FOR AGING & INDEPENDENT LIVING



## MEMORY & DEMENTIA CARE

Libraries and areas for socializing and activities



Specifically created for those who are experiencing any form of memory loss or cognitive decline, our memory care neighborhood is designed to help you or your loved ones continue to live their best life with the highest quality of care possible.

We create a person-centered service plan for each resident, focusing on their needs as individuals and how we are able to help them attain a meaningful life each and every day. Most importantly – we include YOU – the family and friends – as we become an extension of your family celebrating daily successes.



## BENEFITS OF LEGACY

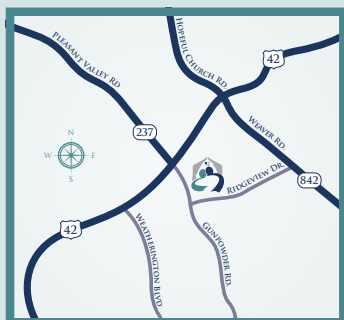
Courtyards with patios and green-space  
and our Chapel shown below



- ▷ Restaurant-style dining open all day
- ▷ Social engagements and refreshments at your pleasure, with friends, family, and neighbors
- ▷ Vibrant life activities schedule featuring social, educational, cultural, and recreational programs and events tailored to meet your interests and abilities
- ▷ Complimentary local scheduled transportation
- ▷ Qualified personal care attendants

- available 24 hours per day, 7 days per week to assist when needed
- ▷ Exercise programs and fitness center
- ▷ Inclusive utilities, housekeeping, and laundry package – simple and convenient
- ▷ Maintenance free living – routine and scheduled
- ▷ Full-service beauty parlor by appointment
- ▷ Well-equipped entertainment and library
- ▷ Pet friendly – because some of our best friends have fur!

8520 GUNPOWDER RD., FLORENCE, KY 41042  
859.534.2436  
WWW.FLORENCESENIORLIVING.COM



ABOUT US



A Servant's heart is the key to success! Creating a daily culture of serving your coworkers in an exceptional manner creates a TEAM environment that is responsive to the needs of our extended family we serve. This TEAMWORK allows us to pay attention to the details and exceed our customers' expectations.

#### Legacy's Why?

**To serve others in our community through Love, Compassion, and Outstanding Work Ethic. Directly or indirectly, making a positive impact on you and your loved ones' lives.**

Written information relating to this community's services and policies is available upon request. KRS 216.595 (1)(a)(b)  
LLF-MP-0123



## SERVICES & AMENITIES





## AMENITIES OF FLORENCE

Overall services and amenities at Legacy Living of Florence:

- Inspired farm-to-table dining experience on your schedule
- Social engagements and refreshments at your pleasure with friends, family, and neighbors
- Door-to-door scheduled transport
- Exercise programs and fitness center
- Maintenance-free living with regular housekeeping and laundry services
- Full-service beauty parlor by appointment
- Well-equipped entertainment library
- 24-Hour Qualified Personal Care Attendant
- Outdoor kitchen and firepit to enjoy endless evenings in ever changing seasons
- Chapel for private worship or organized services with local congregations
- Porch access included for first floor apartments





## CULINARY EXPERIENCE

Whether it is waking up to the smell of bacon frying,  
eggs cooked to order or pancakes on the griddle,  
our inspired dining experience will start your day!  
Breakfast is served all day, so you may eat what you like,  
and when you like – on your schedule .

A variety of dining options allows you to share  
in a casual or elegant dining experience –  
according to your mood. Our open kitchen floor plan  
allows you to interact with our culinary team, sit at the  
bar or just enjoy the aroma of fresh baked goods.

All meals created at Legacy Living  
consist of one special ingredient ...

LOVE

because we love what we do  
and this is WHY WE SERVE.

# FLOOR PLANS





**CRAIG'S CAMP**  
MC STUDIO



Living Area/Bedroom: 17' x 11' 4"  
Bathroom: 8' 9" x 9' 6"

439 SQ. FT.

**DINSMORE**  
AL STUDIO



Living Area/Bedroom: 20' 1" x 11' 6"  
Kitchen: 10' 3" x 7' 6"  
Bathroom: 9' 5" x 9' 1"

431 SQ. FT.

**BURLINGTON**  
AL ONE BEDROOM



Living Room: 14' 11" x 11"  
Kitchen: 14' 11" x 8"  
Bedroom: 11' 11" x 14' 11"  
Bathroom: 7' 9" x 11' 9"

570 SQ. FT.

**CONNER**  
AL DELUXE ONE BEDROOM



Living Room: 19' 9" x 10'  
Kitchen: 16' 1" x 8"  
Bedroom: 12' x 14' 10"  
Bathroom: 9' 3" x 7' 8"

692 SQ. FT.

**BOONE**  
AL TWO BEDROOM



Living Room: 13' x 14' 6"  
Kitchen: 11' 6" x 7' 5"  
Bathroom: 7' 6" x 11' 10"  
Bedroom 1: 12' x 12'  
Bedroom 2: 12' x 14' 1"

893 SQ. FT.

**MADDEN TOWN**  
ONE BEDROOM TOWN HOME



Sunroom: 12' 1" x 12' 3"  
Living Room: 16' 10" x 16' 2"  
Kitchen: 11' 9" x 8' 11"  
Bedroom: 16' 5" x 12'  
Bathroom: 8' 7" x 9' 1"  
Garage: 11' 9" x 23' 4"  
Porch: 17' 3" x 9' 5"  
Patio: 18' x 5' 9"

1239 SQ. FT.



## PIATT'S LANDING TWO BEDROOM TOWN HOME



**Porch:** 17' 11" x 7' 11"  
**Balcony:** 17' 11" x 8' 3"  
**Living Room:** 17' 6" x 15' 9"  
**Kitchen:** 12' 5" x 8' 11"  
**Bedroom 1:** 11' 8" x 12' 6"  
**Bedroom 2:** 10' 11" x 12'  
**Bathroom 1:** 11' 8" x 9' 1"  
**Bathroom 2:** 6' 7" x 9' 10"  
**Garage:** 11' 8" x 20' 2"

**1414 SQ. FT.**

## SECRETARIAT TWO BEDROOM TOWN HOME



### MAIN LEVEL:

**Porch:** 17' 11" x 7' 11"  
**Balcony:** 17' 11" x 8' 3"  
**Living Room:** 14' 1" x 15' 9"  
**Kitchen:** 12' 5" x 8' 11"  
**Bedroom 1:** 11' 8" x 12' 6"  
**Bedroom 2:** 10' 11" x 12'  
**Bathroom 1:** 11' 8" x 9' 1"  
**Bathroom 2:** 6' 7" x 9' 10"  
**Garage:** 11' 8" x 20' 2"

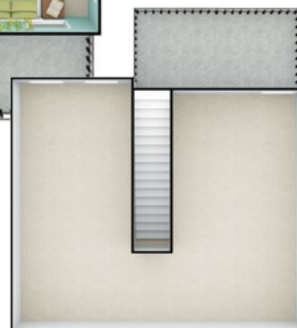
### BASEMENT:

**Basement:** 28' 10" x 24' 9"  
**Basement Porch:** 18' 4" x 8' 5"

**MAIN LEVEL: 1414 SQ. FT.**

**BASEMENT: 682 SQ. FT.**

**TOTAL: 2186 SQ. FT.**



LLF-FP-0123

[WWW.FLORENCESENIORLIVING.COM](http://WWW.FLORENCESENIORLIVING.COM)

8520 GUNPOWDER RD . FLORENCE, KY 41042

859.534.2436





## RATES

### ASSISTED LIVING

Dinsmore (studio).....	\$3692
Burlington (one bedroom).....	\$4815
Conner (one bedroom deluxe) .....	\$5564
Boone (two bedroom).....	\$5671
Second Person Fee .....	\$900

### MEMORY CARE

Craig's Camp (studio).....	\$6420
Level One - Three (no extra fee)	
Level Four - Six .....	\$750

### INDEPENDENT TOWN HOME LIVING

Madden Town (one bedroom).....	\$3879
Piatt's Landing (two bedroom) .....	\$4280
Secretariat(two bedroom)/with basement.....	\$4280

### LEVELS OF CARE

Level One.....	\$410
Level Two.....	\$760
Level Three.....	\$1110
Level Four.....	\$1460
Level Five.....	\$1810
Level Six.....	\$2160

### ADULT DAY CARE

Application fee.....	\$500
4 hours.....	\$75
10 hours.....	\$175
\$30 per hour after 10 hours	

### RESPIRE STAYS

Application fee.....	\$500
Day rate.....	\$230
(includes laundry twice weekly / includes level of care.)	

### DEPOSITS

Application fee.....	\$1500
Security deposit.....	\$2000
Pet .....	\$750

Written information relating to this community's services and policies is available upon request. KRS 216.595 (1)(a)(b)



	CURRENT LIVING SITUATION	LEGACY LIVING
• Monthly Mortgage or Rent Payment		\$
• Property Taxes		\$0
• Utilities (gas, electric, water, sewage)		\$0
• Phone / Internet / Cable		\$0
• Trash Pick Up		\$0
• Annual Home Maintenance		\$0
• Major Repairs (plumbing, A/C, heat/furnace)		\$0
• Lawn Care (snow removal, landscaping, mowing)		\$0
• External Home Maintenance Repairs (gutters, roofing, inclement weather repairs)		\$0
• All Appliances		\$0
• Appliance Replacement		\$0
• Entertainment/Recreational Activities/Fitness Center		\$0
• 1 Meal per day in Our Restaurant		\$0
• Wellness Checks (optional)		\$0
• Emergency Call Pendant Property Wide		\$0
• Security Cameras (on-site)		\$0
• Individual and Group Transportation		\$0
• 5x10 Temperature Controlled Storage Unit (off-site)		

*\*offered at a discounted rate*

[florenceseniorliving.com](http://florenceseniorliving.com)

8520 Gunpowder Rd . Florence, KY 41042

859.534.2436

LLF-CC-0820



8520 GUNPOWDER RD.  
FLORENCE, KY 41042  
859.534.2436



[WWW.FLORENCESENIORLIVING.COM](http://WWW.FLORENCESENIORLIVING.COM)

INDEPENDENT  
LIVING

ASSISTED  
LIVING

MEMORY  
CARE