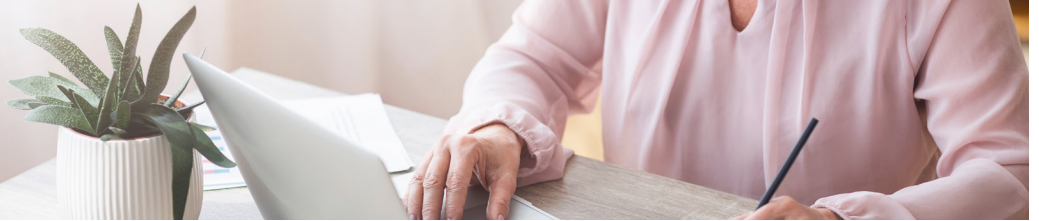


# COST OF LIVING COMPARISON



## Compare Your Cost of Living with Ours

Use this chart to compare your current monthly expenses with the items and amenities included in a Pillars Monthly Apartment Home Lease. (Costs are dependent on your choice of living level.)

| EXPENSE ITEMS                                  | PRESENT COSTS | OUR COSTS |
|--|---------------|-----------|
| Mortgage Payment (monthly fee)                 | \$            | \$        |
| Real Estate Taxes (CRP Rent Credit with State) | \$            | Included  |
| Home Insurance (Renters Insurance Recommended) | \$            | \$        |
| Heat and Air Conditioning                      | \$            | Included  |
| Electricity and Natural Gas                    | \$            | Included  |
| Water, Sanitation, and Garbage                 | \$            | Included  |
| Cell Phone and/or Landline                     | \$            | \$        |
| Trash/Garbage Removal                          | \$            | Included  |
| TV - Expanded Basic Satellite Television       | \$            | Included  |
| Home Repairs                                   | \$            | Included  |
| Lawn Care and Mowing                           | \$            | Included  |

Continued on other side ►

|  |    |                                 |
|--|----|---------------------------------|
| Snow Shoveling and Plowing                     | \$ | Included                        |
| Outside Painting                               | \$ | Included                        |
| Expanded Basic Satellite Television            | \$ | Included                        |
| Wireless Internet Access                       | \$ | Included                        |
| Property Maintenance                           | \$ | Included                        |
| Dining Out                                     | \$ | \$ <i>(Included in AL Only)</i> |
| Groceries, Toiletries and other essentials     | \$ | Included                        |
| 24-Hour Emergency Call System                  | \$ | \$ <i>(Included in AL Only)</i> |
| 24-Hour On-site Staff                          | \$ | Included                        |
| Gym Membership/On-Site Recreational Activities | \$ | Included                        |
| Concierge Services                             | \$ | Included                        |
| Library with Computer/Internet Access          | \$ | Included                        |
| Transportation to Scheduled Activities         | \$ | Included                        |
| Social, Cultural, Educational Programs         | \$ | Included                        |
| Hair Salon and Spa                             | \$ | \$                              |
| Chapel Services                                | \$ | Included                        |
| <b>TOTAL MONTHLY FEE:</b>                      |    |                                 |

