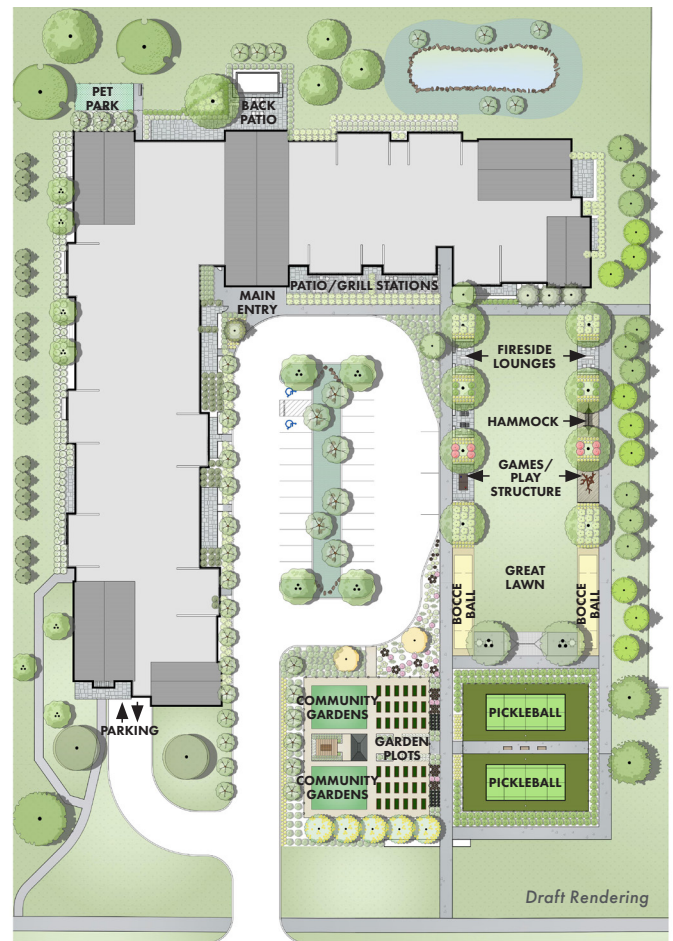


EXPLORE THE COOPERATIVE LIFESTYLE

Member-owned and member-governed, Estoria Lakeville offers a variety of single-level floor plans, ranging in size from 1BR/1BA (970sf) up to 3 BR/2BA plus den (1,765sf), with quality home finishes that can be personalized to your liking. Our thoughtfully created building design offers common spaces for gathering throughout, along with the privacy of your own home. You'll find endless ways to connect and create. From cozy corners for gathering to outdoor walking paths and game areas, there's always a place to find community, so you can get to know your neighbors. Here are just some of the many amenities you'll enjoy:

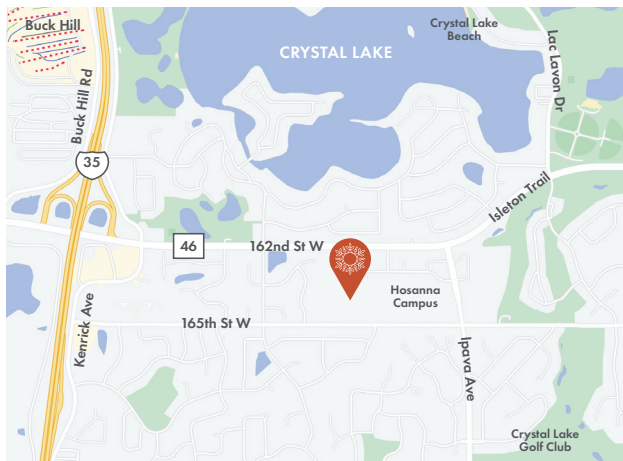
- Outdoor patio with firepit and grill stations
- Outdoor green space for gathering
- Outdoor games/lounge areas
- Pickleball and bocce ball courts
- Community garden and individual garden plots
- Pet park with artificial turf/lounge area
- Walking paths
- Grand lobby with fireside lounge, and coffee bar
- Great room with serving kitchen
- Art studio, fitness/wellness studio, and yoga classroom
- Pub room with bar/lounge, golf simulator, and private access
- Garden room/lounge



165TH STREET WEST

ENJOY THE LAKEVILLE COMMUNITY

If you are looking for an active lifestyle, Lakeville offers plenty of opportunities. According to the U.S. Census Bureau, Lakeville is the fastest growing city in the Twin Cities metro area, so you will find plenty of choices for social and leisure activities, including:



- Golf courses and more than 60 parks
- Art and pottery classes at the Lakeville Area Arts Center
- Expressions Community Theater
- Cultural opportunities, including Lakeville Heritage Center
- More than 100 walking, hiking, or biking trails
- Community pools, wellness and fitness clubs, including Life Time Fitness
- Nearby churches, mosques, and synagogues
- Emagine movie theater
- Grocery, shopping centers, and banks
- Medical facilities and health clinics
- Local beaches and Minnesota Zoo nearby

CONVENIENCE AND CONNECTION

Estoria Lakeville is conveniently located west of Ipava Avenue between County Road 46 and 165th Street West, adjacent to the Hosanna campus. Ample recreation and leisure activities, shopping, dining, and more are just a short drive away.

On behalf of the Estoria Team, we appreciate your interest. We look forward to hearing your story and sharing ours.