



CLEARWATER AHWATUKEE

A Senior Living Community

LIVING THAT GETS MORE OUT OF LIFE

Make a commitment to living well with Clearwater Living

With a variety of meaningful services and sophisticated settings, our community offers a resident-centered approach for seniors of varying needs so they can live as active and engaged as they want to be. We provide opportunities for our residents to grow into additional levels of care with minimal interruption to their daily lives.

Clearwater Living helps seniors thrive with a balance of independence and support. Everyone is unique. As needs evolve, we create personalized care plans and programs that feel right for you and your loved one. Curated amenities, engaging activities, culinary delights, and a refined setting are all icing on the cake.





The compassionate care you deserve to live a meaningful life

Clearwater Living offers service with a smile and a mindful approach to living. Assisted Living residents will receive daily assistance they can truly count on, with access to the care they need now, and as their needs change over time. Our team will work with you and your family to create a thoughtful, detailed and comprehensive care plan with an inclusive approach to achieving a balanced life.

People with memory impairment or Alzheimer's have unique needs. Our Memory Support neighborhood is designed to cater to those needs through a holistic approach to care and programming. Residents will be supported by compassionate care partners who lead with integrity. In addition, the secure neighborhood has easy-to-navigate spaces to help residents retain their pride and promote independence within their abilities.

MISSION STATEMENT

We create experiences that
celebrate your relevance.

CORE VALUES:

Serve with Passion

Value Relationships

Diversity Makes Us Better

Stewardship with Integrity

Pay it Forward

Encourage Fun and Creativity

We Expect the Best

Empowered Living

At Clearwater Ahwatukee, we believe successful aging requires connection with the world and a lifestyle rich in emotional, physical, and social experiences. Through our Empowered Living lifestyle philosophy, we encourage residents to take part in a variety of diverse programs, amenities, and events, all designed to help you learn and grow, while adding a greater sense of meaning and purpose to your life.

One important aspect of successful aging is eating well. Clearwater Ahwatukee is committed to serving residents delicious, nutritious, and inventive cuisine in a variety of unique settings. Our culinary program features a chef-prepared menu of seasonal dishes offering satisfying portions created using the freshest ingredients. Our nutritious dishes are made-to-order with a variety of delicious between-meal snacks, fueling mind and body for engaged, active, and enjoyable days.

THE SIX DIMENSIONS OF LIVING WELL

Physically Active

Improve or maintain optimum health and functional ability with activities designed to enhance strength and balance of varying levels.

Mentally Stimulating

Be inspired with creative classes and intellectual activities to foster continued learning.

Purpose & Meaning in Life

Discover what's in your heart emotionally and spiritually to find an optimal sense of self.

Social Engagement

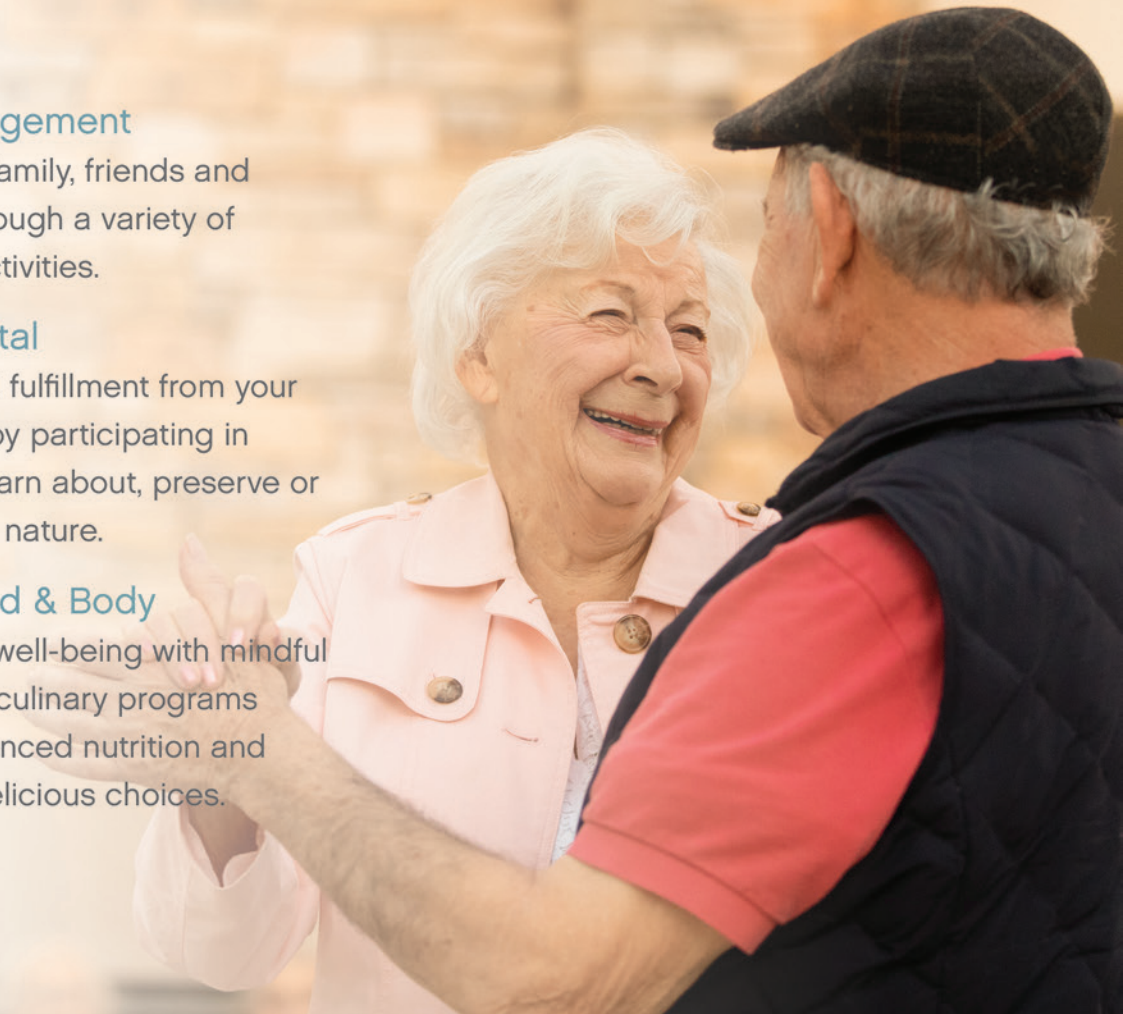
Engage with family, friends and neighbors through a variety of community activities.

Environmental

Gain personal fulfillment from your environment by participating in activities to learn about, preserve or spend time in nature.

Nourish Mind & Body

Boost overall well-being with mindful wellness and culinary programs that offer balanced nutrition and a variety of delicious choices.



Independent Living

Our Independent Living residents enjoy the comforts of home with the conveniences of a maintenance-free lifestyle. With several upscale apartment styles to choose from and fully enclosed garages available to rent, all of our residents enjoy charming views of our lush courtyard, or the cozy, residential community that surrounds us.

Assisted Living

When the tasks of homeownership and activities of daily living become a burden to one's quality of life, the benefits of relief, personalized care, and purposeful living can be found at Clearwater Living. Our highly trained team will work with you and your family to create a thoughtful, detailed, and comprehensive care plan with an inclusive approach to achieving a balanced life.

Memory Support

People with memory impairment or Alzheimer's have unique needs. Our Clearbrook Memory Support neighborhood is designed to cater to those needs through a holistic approach to care and programming. Residents will be supported by compassionate care partners who lead with integrity. In addition, the secure neighborhood has easy-to-navigate spaces to help residents retain their pride and promote independence within their abilities.

Personalized Care and Services

- Licensed Nurse On-site
- Compassionate Care Partners available 24 hours a day
- Monitoring of Resident's Well-Being
- Personalized Care Plan to Support Activities of Daily Living
- Medication Coordination
- Mobility Assistance and Transferring
- Assistance with Dressing
- Shower and Bathing Assistance
- On-site Therapy Services - Physical, Occupational, and Speech
- Short-Term Stay for Transitional Care

A Welcoming Environment with comprehensive services

- Maintenance-Free Living
- Private Studio, One- and Two-Bedroom Apartments
- Emergency Response System
- Secured Entrances and Exits
- Weekly Housekeeping
- Weekly Laundry and Linen Services
- Savor Dining – Chef-Inspired Meals Plus Nutritious Snacks
- Empowered Living Lifestyle Program
- Transportation and Concierge Services
- Pet friendly

Community Amenities that are meaningful (and fun)

- Fresh restaurant-style cuisine at The Crave Restaurant and TUK Urban Kafe
- Small indulgences and beverages in the Gen Bistro
- Seasonal outdoor dining at the Veranda Grille
- Radiance Salon
- State-of-the-art Legends Movie Theater
- Fitness Center
- Art Studio
- Deuces Wild Game Room
- Genius Center Library and Reading Lounge
- Infusions Wine Cellar
- Silk Tassel Tea Room
- Elite Studies Learning Center
- CARF® Accredited

LIVING THAT GETS MORE OUT OF LIFE



Experience Culinary Excellence

Discover inventive dishes for breakfast, lunch and dinner while enjoying sophisticated surroundings both indoors and outdoors. The unique culinary experience at Clearwater Living is full of fresh, seasonal ingredients and satisfying portions. With a focus on quality and variety, we provide nutritious meals and snacks daily that nourish the mind and body. Innovative menus are designed to reflect attention to detail accented with a creative flair.

Chef-prepared, artisanal dishes are made to order while residents are encouraged to enjoy the engaging atmosphere with family and friends. Dorothy Day said, "Food for the body is not enough. There must be food for the soul."

Join us in one of our dining venues and let us warm your soul!



Fresh restaurant-style cuisine with waited table service at The Crave Restaurant



Our stylish dining room and lounge at TUK Urban Kafe will offer a memorable experience



Enjoy small indulgences, beverages and visits with friends in the Gen Bistro



Infusions Wine Cellar provides you with friendly gatherings and "happy hours" to enjoy



Join us for scheduled tea parties or host one yourself for your family and friends in the Silk Tassel Tea Room

- Juniper (1 bedroom)
- Willow (1 bedroom)
- Cottonwood (1 bedroom)
- Cypress (1 bedroom)
- Aspen (1 bedroom + den)
- Acacia (1 bedroom + den)
- Palo Verde (2 bedroom)
- Jacaranda (2 bedroom)
- E Elevator
- S Stairs
- R Restroom

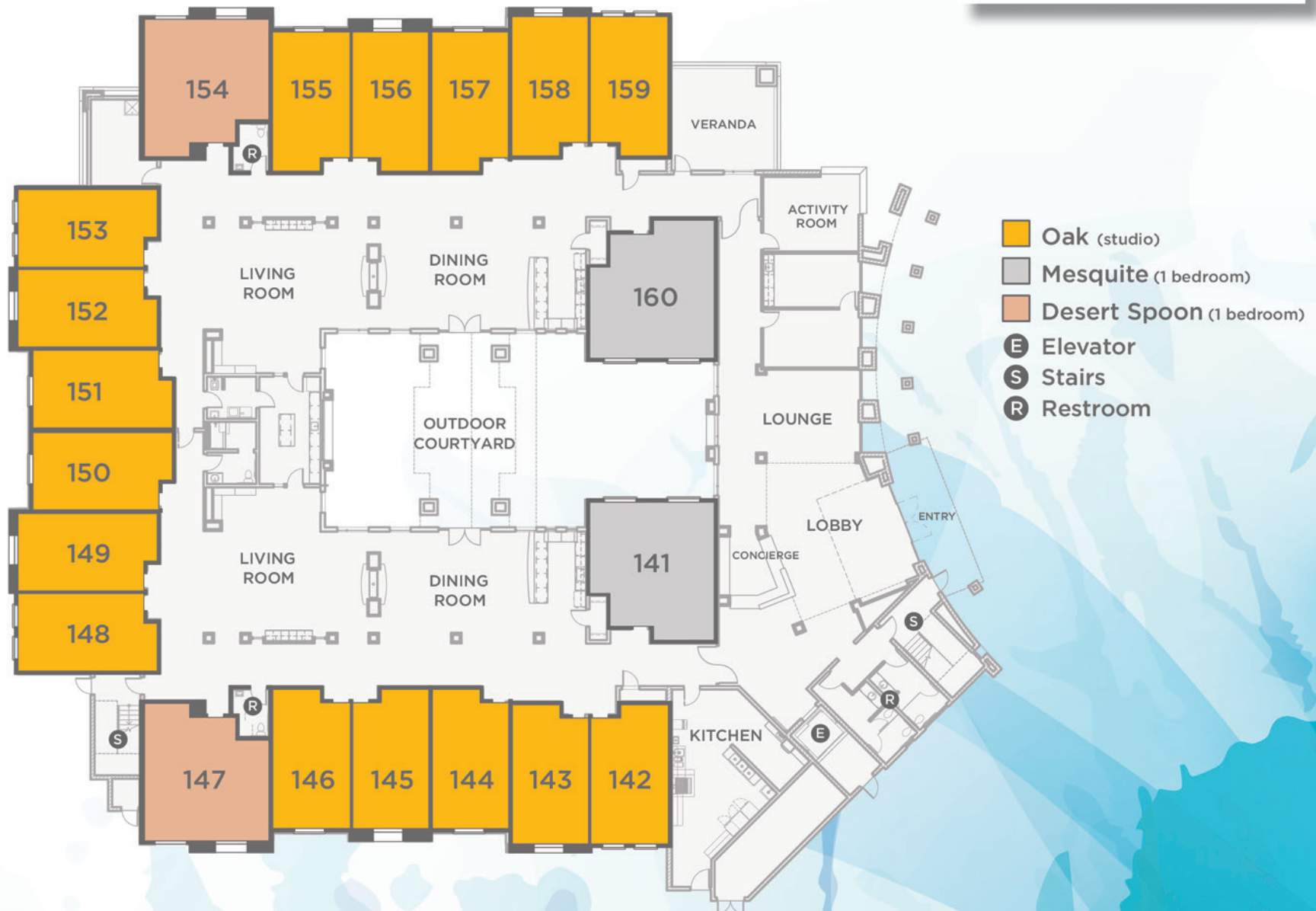


- Juniper** (1 bedroom)
- Willow** (1 bedroom)
- Cottonwood** (1 bedroom)
- Cypress** (1 bedroom)
- Aspen** (1 bedroom + den)
- Mimosa** (1 bedroom + den)
- Acacia** (1 bedroom + den)
- Palo Verde** (2 bedroom)
- Jacaranda** (2 bedroom)
- E** Elevator
- S** Stairs
- R** Restroom



- Juniper** (1 bedroom)
- Willow** (1 bedroom)
- Cottonwood** (1 bedroom)
- Cypress** (1 bedroom)
- Aspen** (1 bedroom + den)
- Acacia** (1 bedroom + den)
- Palo Verde** (2 bedroom)
- E **Elevator**
- S **Stairs**

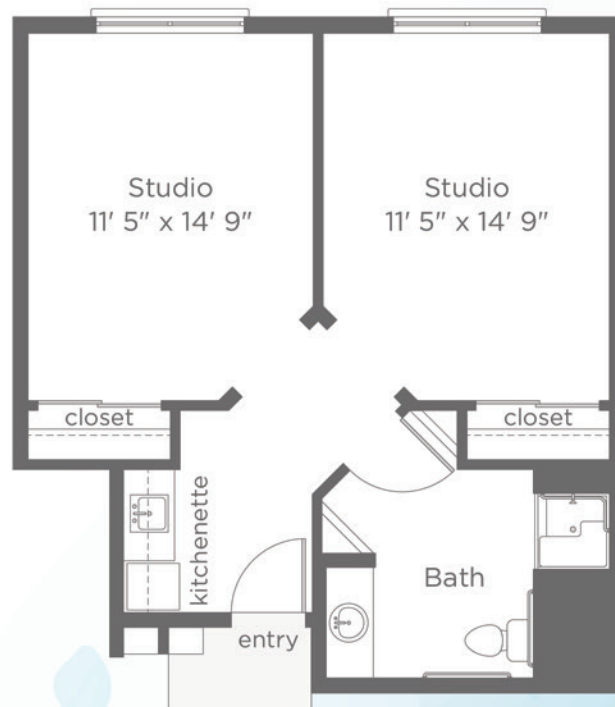




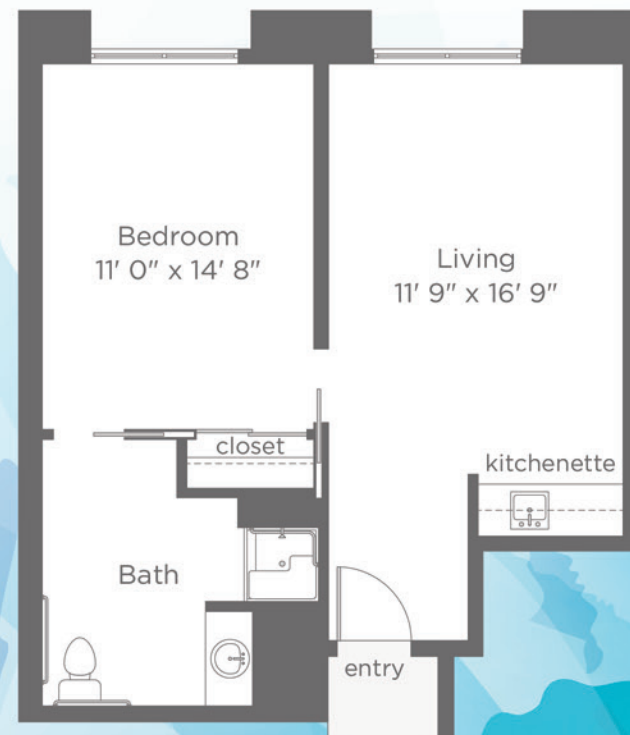




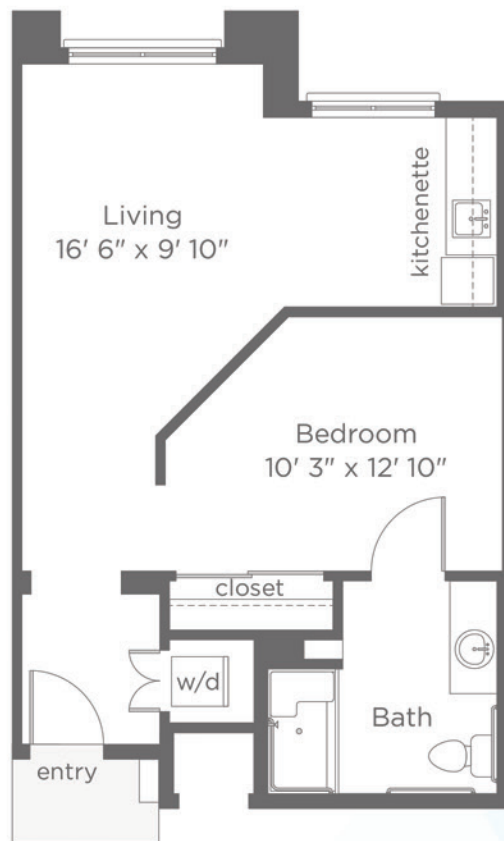
OAK
 402 Sq. Ft.
 Studio / 1 Bath



MESQUITE
 600 Sq. Ft.
 1 Bedroom / 1 Bath



DESERT SPOON
 607 Sq. Ft.
 1 Bedroom / 1 Bath

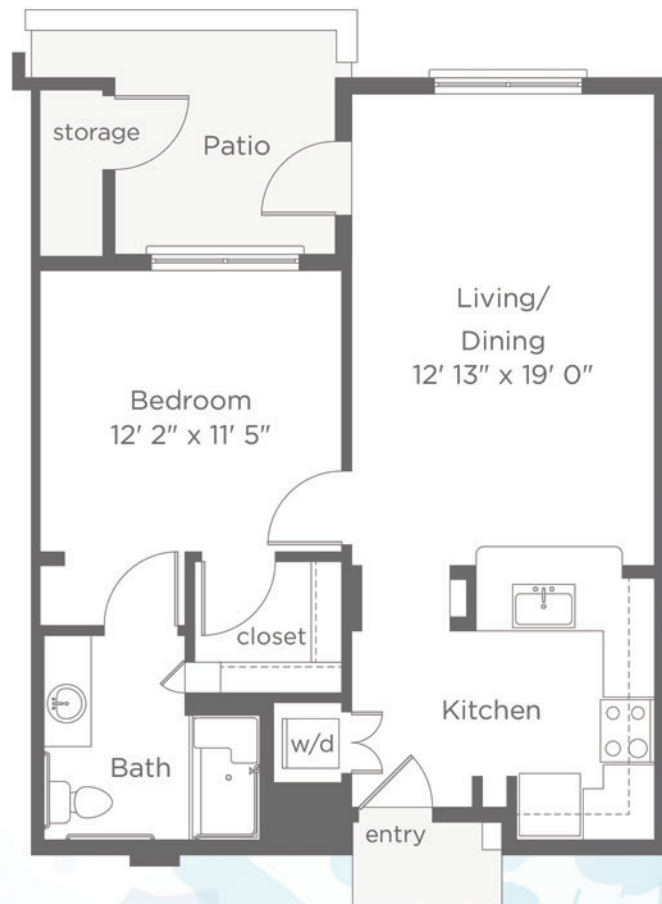


JUNIPER
577 Sq. Ft.
1 Bedroom / 1 Bath



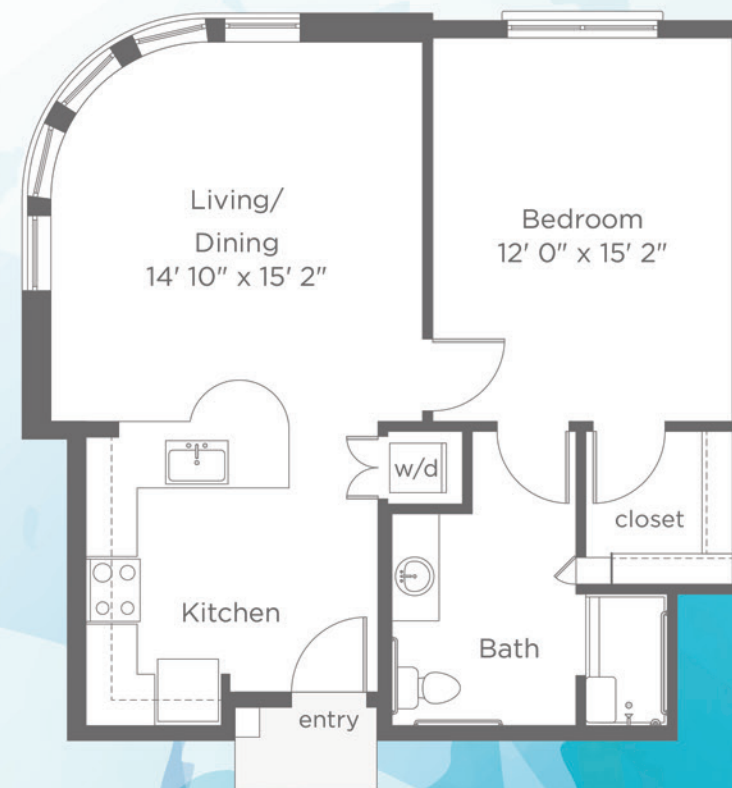
COTTONWOOD

701 Sq. Ft.
 1 Bedroom / 1 Bath

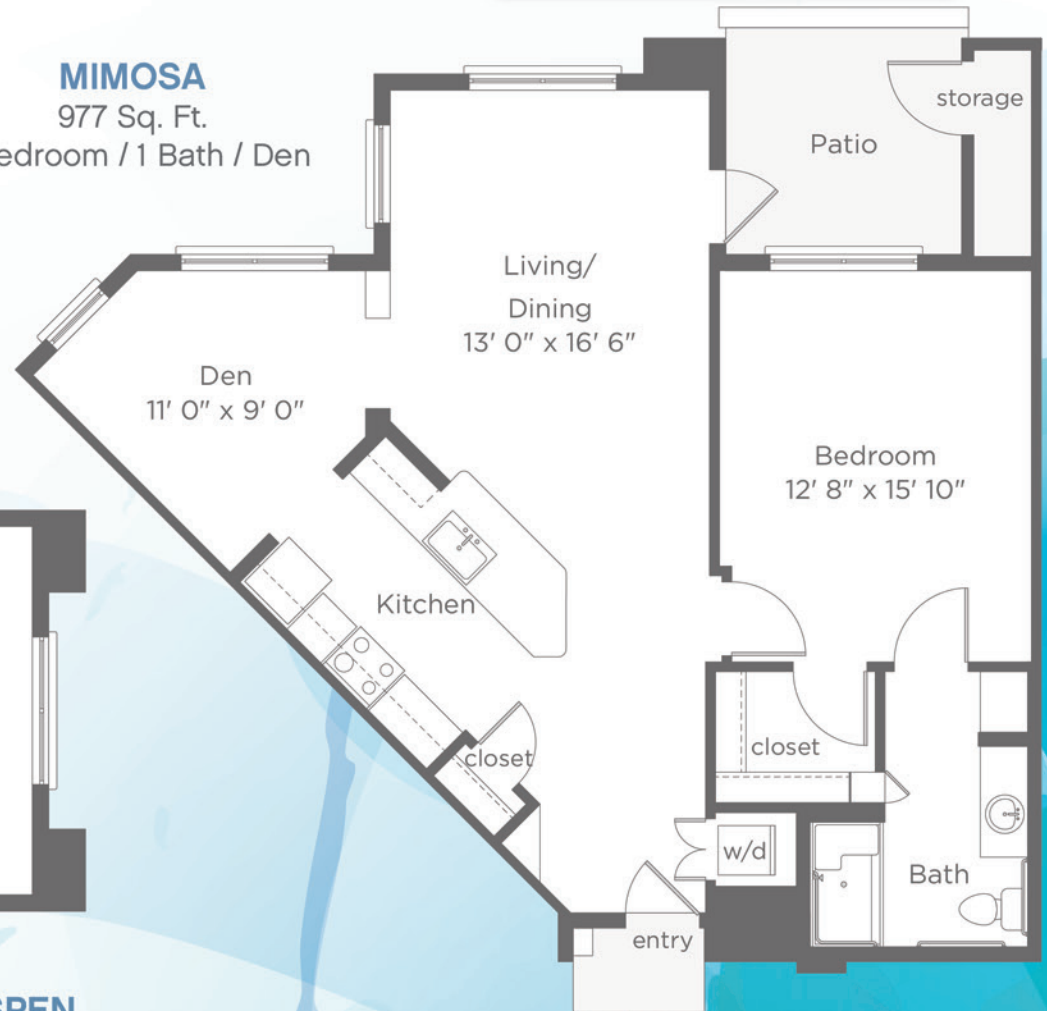


CYPRESS

754 Sq. Ft.
 1 Bedroom / 1 Bath



MIMOSA
977 Sq. Ft.
1 Bedroom / 1 Bath / Den



ASPEN
896 Sq. Ft.
1 Bedroom / 1 Bath / Den



ACACIA
988 Sq. Ft.
1 Bedroom / 1 Bath / Den



PALO VERDE
1,026 Sq. Ft.
2 Bedroom / 2 Bath



JACARANDA
1,150 Sq. Ft.
2 Bedroom / 2 Bath



CLEARWATER AHWATUKEE

A Senior Living Community

480.485.3000

15815 S. 50th St.
Phoenix, AZ 85048

ClearwaterAhwatukee.com

