

1420 WISCONSIN AVENUE, NW

WASHINGTON, DC

COMMERCIAL BUILDING FOR SALE/LEASE

BUILDING FOR SALE 6,500+ SF
FOR LEASE 3,250-6,500+ SF



PROPERTY HIGHLIGHTS

APPROX. 3,250 SF PER FLOOR

28' OF FRONTAGE ON
WISCONSIN AVE.

FULL BASEMENT

AN ABUNDANCE OF NATURAL LIGHT
ON FIRST AND SECOND FLOOR

LOCATED IN THE HEART OF
GEORGETOWN ON WISCONSIN AVE
AT O STREET

SURROUNDED BY FANTASTIC
RESTAURANTS AND SHOPPING

AVAILABLE FOR "POP-UP" STORE



MICHAEL BORGER

SENIOR COMMERCIAL MANAGER

202.898.2935 OFFICE

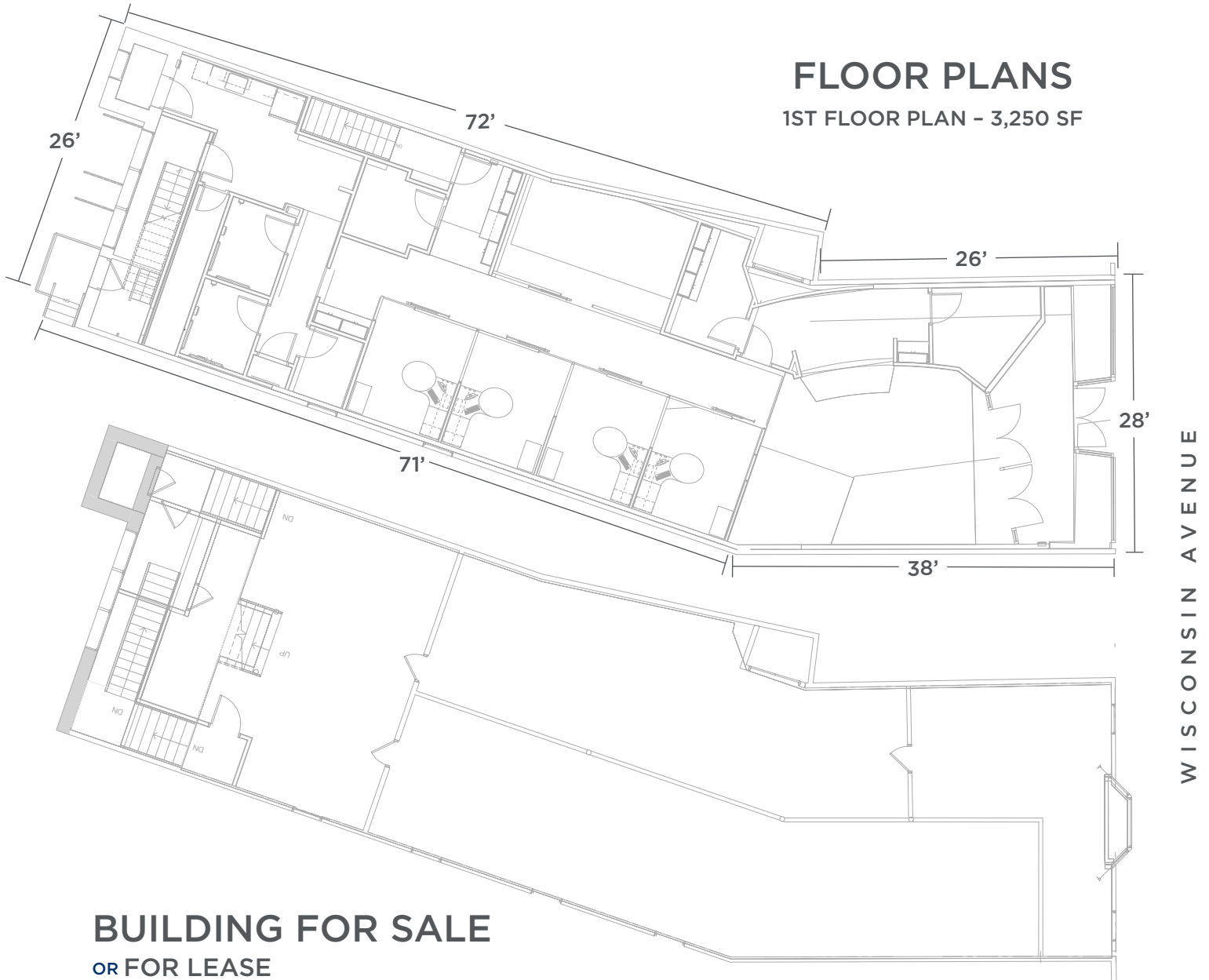
MJBORGER@BORGERMANAGEMENT.COM

1420 WISCONSIN AVENUE, NW

WASHINGTON, DC

FLOOR PLANS

1ST FLOOR PLAN - 3,250 SF



BUILDING FOR SALE

OR FOR LEASE

1ST FLOOR..... 3,250 SF.... \$75.00 PSF

2ND FLOOR 3,250 SF.... \$18.00 PSF

LOWER LEVEL 3,250 SF.... INCLUDED AT NO CHARGE

2ND FLOOR PLAN - 3,250 SF

LEASE TERMS FLEXIBLE

ALL MEASUREMENTS ARE APPROXIMATE



MICHAEL BORGER

SENIOR COMMERCIAL MANAGER

202.898.2935 OFFICE

MJBORGER@BORGERMANAGEMENT.COM

1420 WISCONSIN AVENUE, NW

WASHINGTON, DC

LOCATION

GEORGETOWN

1. CVS
2. BOULANGERIE CHRISTOPHE
3. CLYDE'S
4. DAVID RIOS SALON AND SPA
5. COMPASS COFFEE
6. CAFÉ MILANO
7. APPLE STORE
8. FILOMENA RESTAURANT
9. BANANA REPUBLIC
10. LULULEMON
11. GEORGETOWN CUPCAKE



MICHAEL BORGER

SENIOR COMMERCIAL MANAGER

202.898.2935 OFFICE

MJBORGER@BORGERMANAGEMENT.COM



MICHAEL BORGER

SENIOR COMMERCIAL MANAGER

202.898.2935 OFFICE

MJBORGER@BORGERMANAGEMENT.COM



THE INFORMATION CONTAINED HEREIN IS BELIEVED TO BE ACCURATE
BUT THE LANDLORD OR AGENT DOES NOT WARRANT OR GUARANTY
THE ACCURACY AND THEREFORE IS SUBJECT TO CHANGE WITHOUT NOTICE.

