



**PEINE
LAKES**

A green-tinted photograph of a room. On the left, a large potted plant with long, thin leaves is visible. On the right, a dark wooden cabinet or desk is partially shown. The background is a light-colored wall. The entire image is overlaid with a semi-transparent green filter.

CARDIO AND FITNESS
ROOM WITH 24-HOUR
ACCESS

LARGE SWIMMING
POOL WITH UNIQUE
PLAY AREAS

24-HOUR ONSITE
CLOTHES CARE
CENTERS

CONVENIENT
RESIDENT CAR WASH

PLAYGROUND

BASKETBALL COURT

TENNIS COURT

BUSINESS CENTER



COMMUNITY AMENITIES

APARTMENT FEATURES



A photograph of an interior room, possibly a living area, with a teal-colored overlay. The room features a wooden chair, a potted plant, and a framed picture on the wall. The text is overlaid on the image in white, sans-serif font.

CHEF-INSPIRED KITCHENS

FULL-SIZE WASHER/DRYER
CONNECTIONS

WALK-IN CLOSETS

EXPANSIVE VAULTED
CEILINGS

ENERGY EFFICIENT CEILING
FANS

PRIVATE PATIO OR BALCONY
WITH STORAGE AREA

LARGE PANTRIES AND
CABINET SPACE

1-BEDROOM



ONE BEDROOM

1 BD / 1 BA

802 SQFT



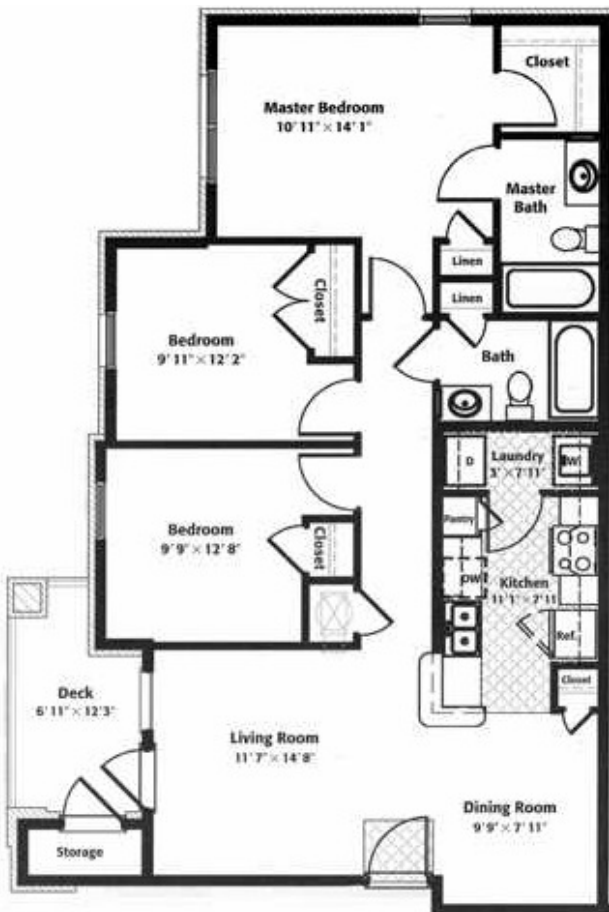
TWO BEDROOM

2 BD / 2 BA

1,026 SQFT

2-BEDROOM

3-BEDROOM FLOOR PLANS



THREE BEDROOM

3 BD / 2 BA

1,157 SQFT

PEINE LAKES

SCHEDULE YOUR
PERSONALIZED TOUR TODAY

636.856.5429

2010 PEINE RD,
WENTZVILLE, MO 63385
PEINELAKES.COM