



LIVE  
THE  
WAY  
YOU  
WANT

**PROVENCE  
APARTMENTS**



COMMUNITY ROOM  
WITH A FULL KITCHEN

OUTDOOR SWIMMING  
POOL WITH SUNDECK

ENERGIZING 24-HOUR  
FITNESS CENTER

FULL-SERVICE COFFEE  
BAR AND WIFI LOUNGE

TWO RESIDENT PARTY  
ROOMS

BUSINESS CENTER  
WITH WIFI - OPEN  
DAILY

UNDERGROUND  
HEATED PARKING  
INCLUDED

AMPLE GUEST PARKING

TWO-BEDROOM GUEST  
SUITE AVAILABLE

JOGGING/WALKING  
TRAIL ACCESS

CONTROLLED ENTRY  
ACCESS WITH CLIMATE-  
COMFORT HALLWAYS



COMMUNITY AMENITIES

# APARTMENT FEATURES





WASHER AND  
DRYER INCLUDED

OVERSIZED  
WINDOWS

NINE-FOOT  
CEILINGS

WALK-IN CLOSET

STORAGE SPACE

PRIVATE PATIO OR  
BALCONY

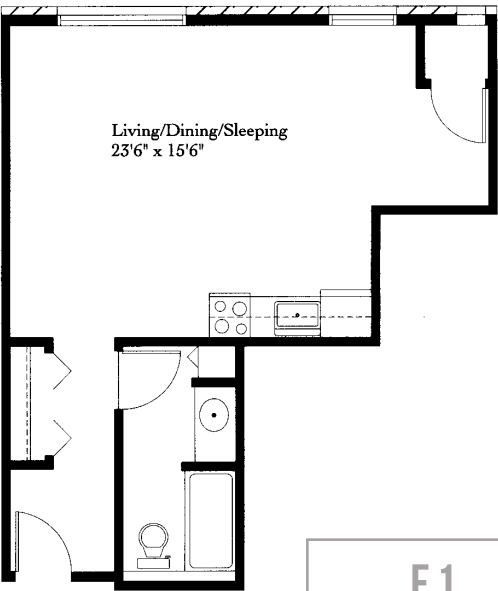
UNIQUE FEATURES  
AVAILABLE  
INCLUDING DEN  
SPACE AND  
FIREPLACES\*

FULLY-EQUIPPED  
KITCHEN WITH  
A BUILT-IN  
MICROWAVE

GORGEOUS  
BAY WINDOWS  
AVAILABLE\*

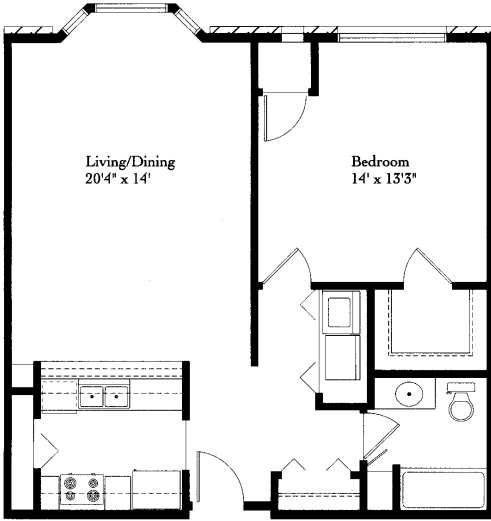
*\*IN SELECT UNITS*

# STUDIO FLOOR PLANS



E1
STUDIO
505 SQFT

# 1-BEDROOM FLOOR PLANS



**A1**

1 BD / 1 BA

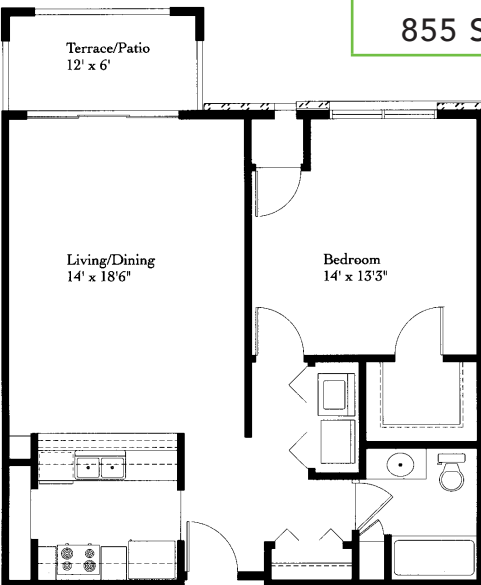
815 SQFT



**A2**

1 BD / 1 BA

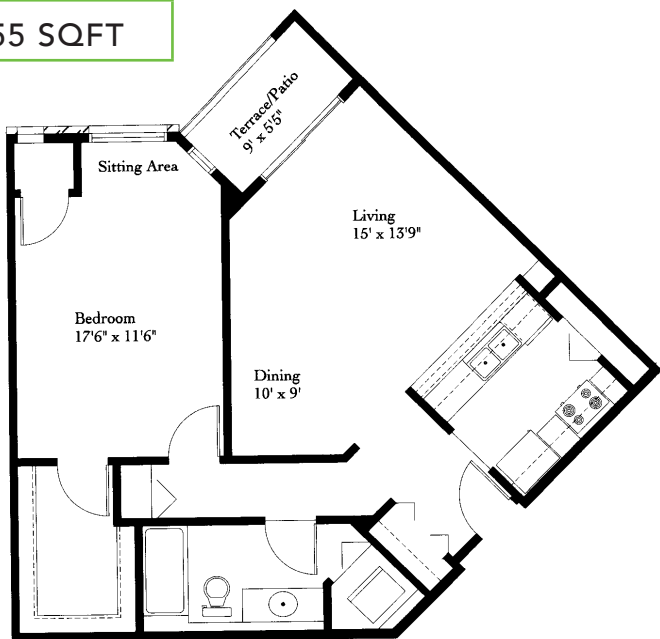
855 SQFT



## A2D

1 BD / 1 BA

855 SQFT



## A3

1 BD / 1 BA

900 SQFT

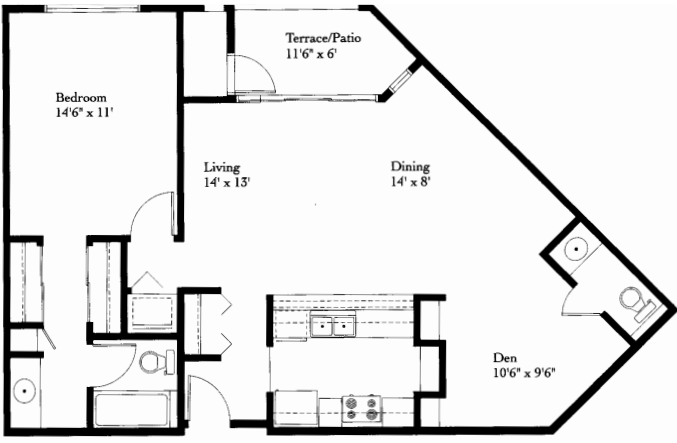


# 1-BEDROOM FLOOR PLANS

A4

1 BD / 1 BA

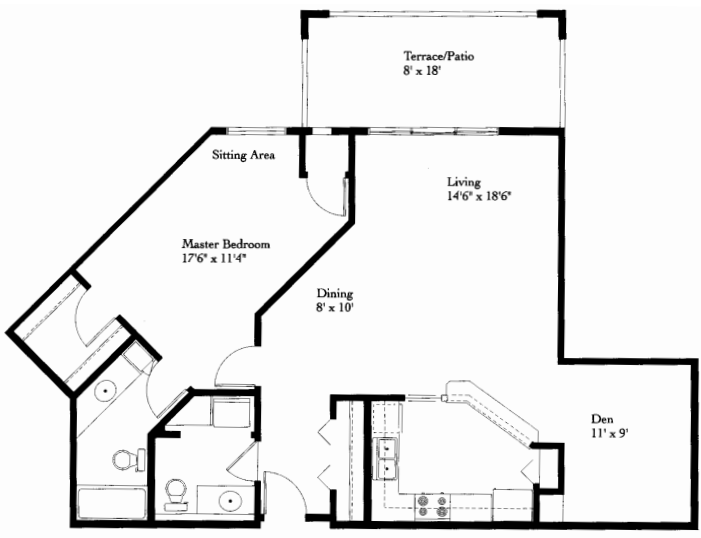
990 SQFT



A5

1 BD / 1.5 BA / DEN

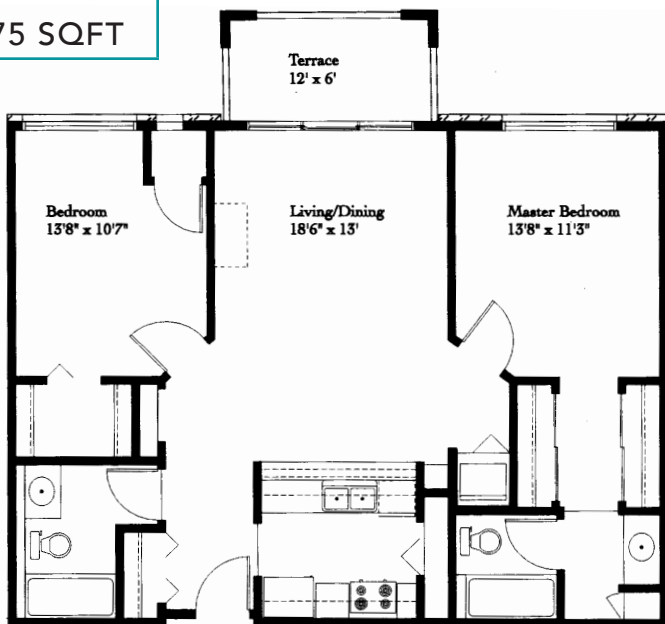
1,195 SQFT



## B1

2 BD / 2 BA

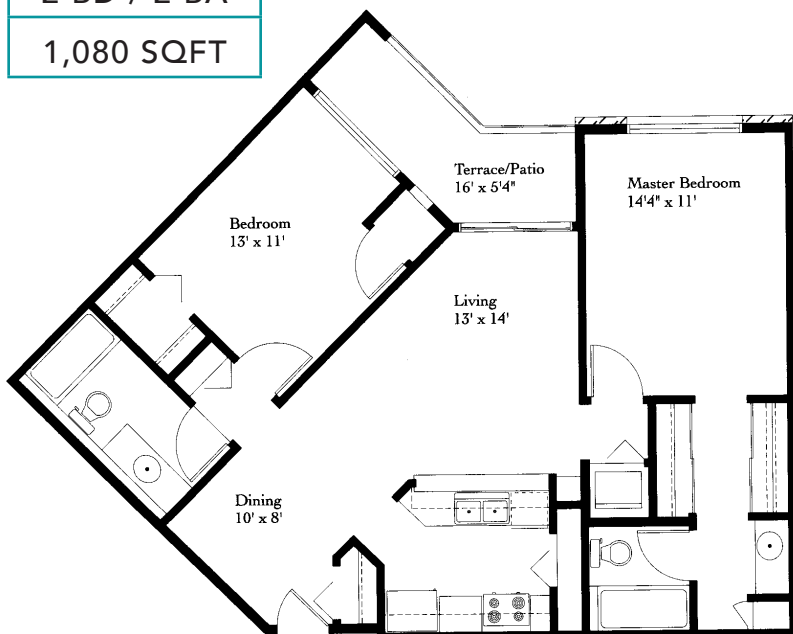
1,075 SQFT



## B2

2 BD / 2 BA

1,080 SQFT

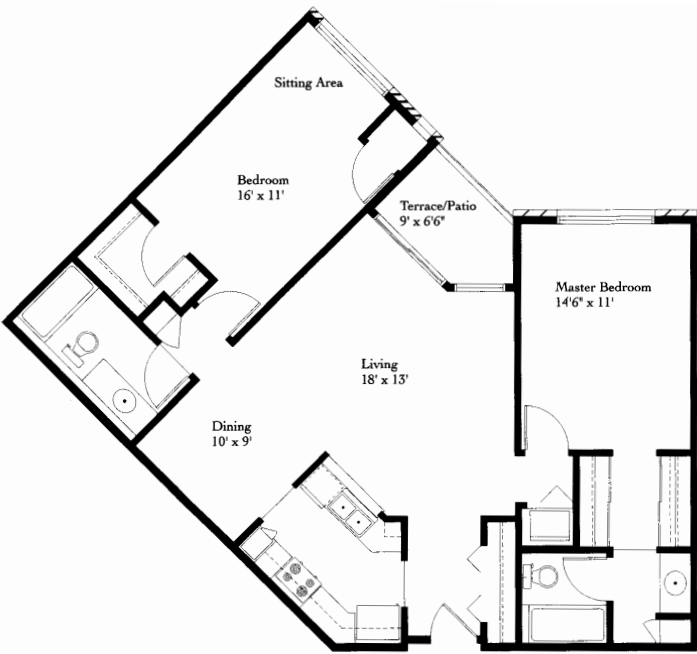


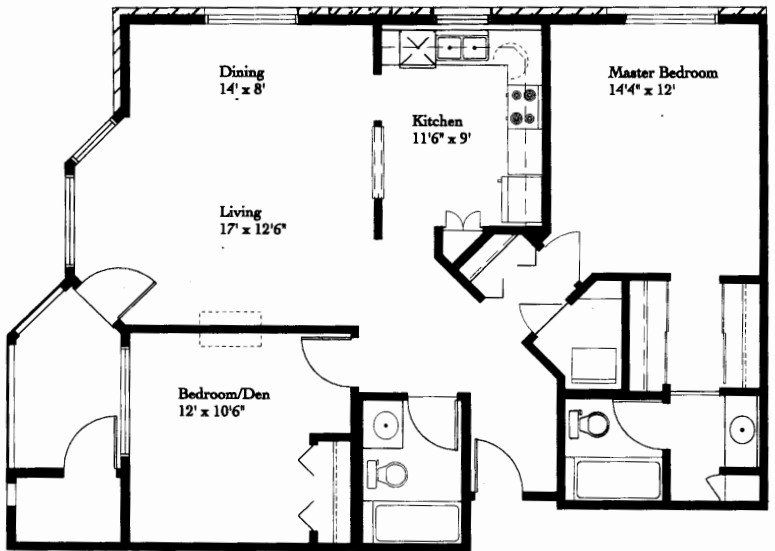
# 2-BEDROOM FLOOR PLANS

**B3**

2 BD / 2 BA

1,165 SQFT



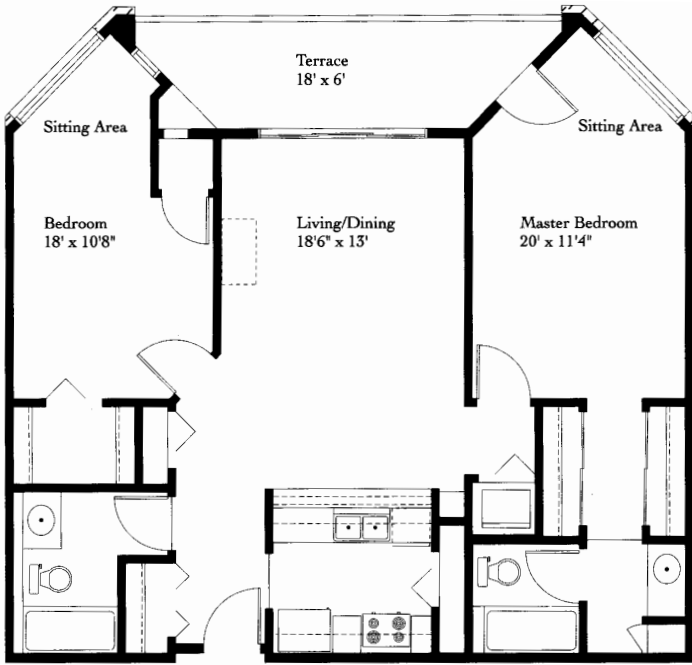


**B4**

2 BD / 2 BA

1,175 SQFT

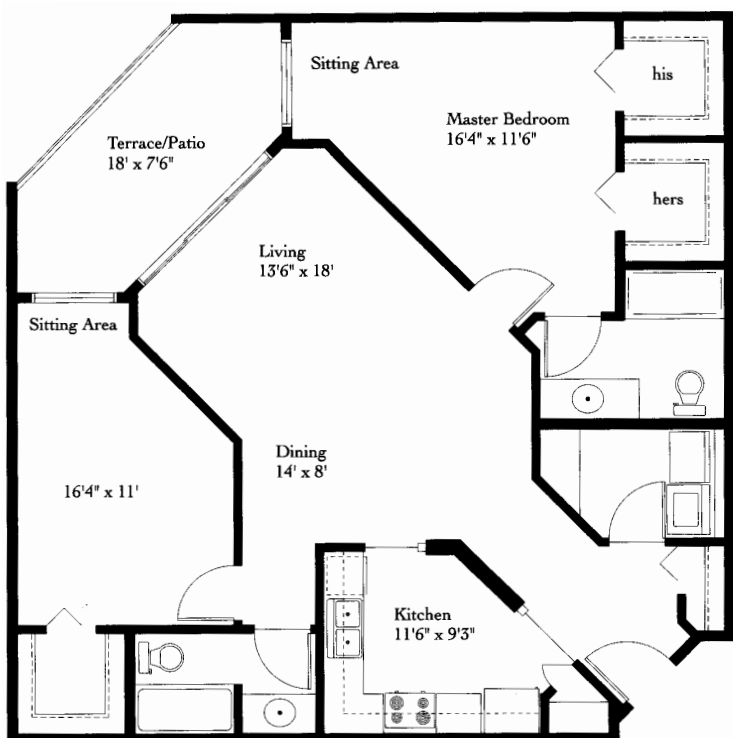
# 2-BEDROOM FLOOR PLANS



**B5**

2 BD / 2 BA

1,185 SQFT

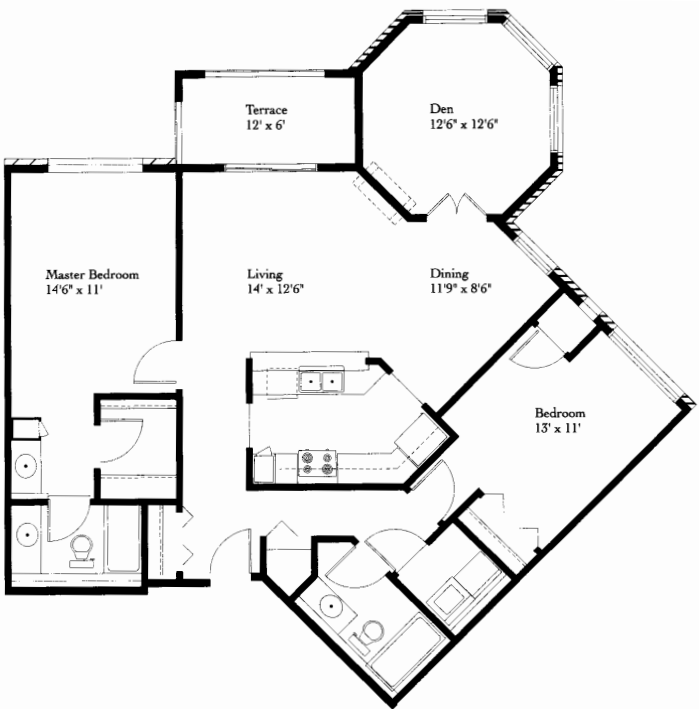


**B6**

2 BD / 2 BA

1,265 SQFT

# 2-BEDROOM FLOOR PLANS



**B7**

2 BD / 2 BA

1,320 SQFT

# PROVENCE APARTMENTS

SCHEDULE YOUR  
PERSONALIZED TOUR TODAY

**952.892.6100**

1711 143<sup>RD</sup> STREET WEST  
BURNSVILLE, MN 55306  
PROVENCEAPTS.COM