

# 24,324 SF AVAILABLE IN NEWLY RENOVATED BUILDING



818 CONNECTICUT AVENUE, NW  
WASHINGTON, DC 20006

## SPACE AVAILABLE

2nd Floor – 7,317 RSF

4th Floor – 2,578 RSF

4th Floor – 3,349 RSF

5th Floor – 2,181 RSF

8th Floor – 3,424 RSF

12th Floor – 5,475 RSF

- 24 hour concierge/lobby attendant
- Beautifully renovated building including new lobby, elevator cabs, restrooms and fitness center with showers
- Parking in building
- 1/2 block from Farragut West and Farragut North

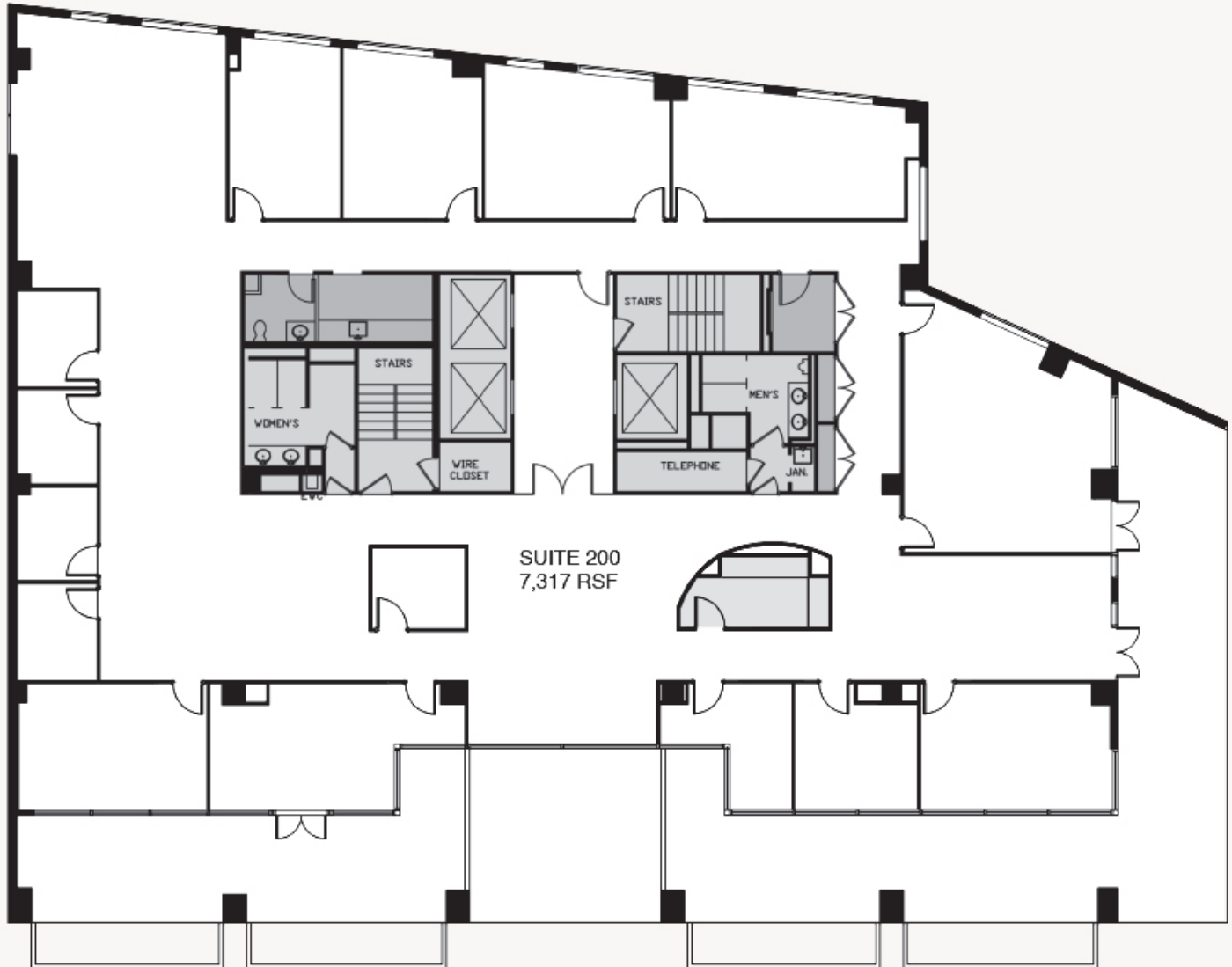
- Located in the Central Business District; 2 blocks from the White House
- Within walking distance of the Army Navy Club, Farragut Square

For leasing information, contact  
**Carla C. Cavanaugh**  
Vice President, Commercial Leasing  
202-617-3122  
ccavanaugh@borgermanagement.com

**BORGER**  
MANAGEMENT

# 2ND FLOOR AVAILABILITY

AS-BUILT PLAN



CONNECTICUT AVENUE

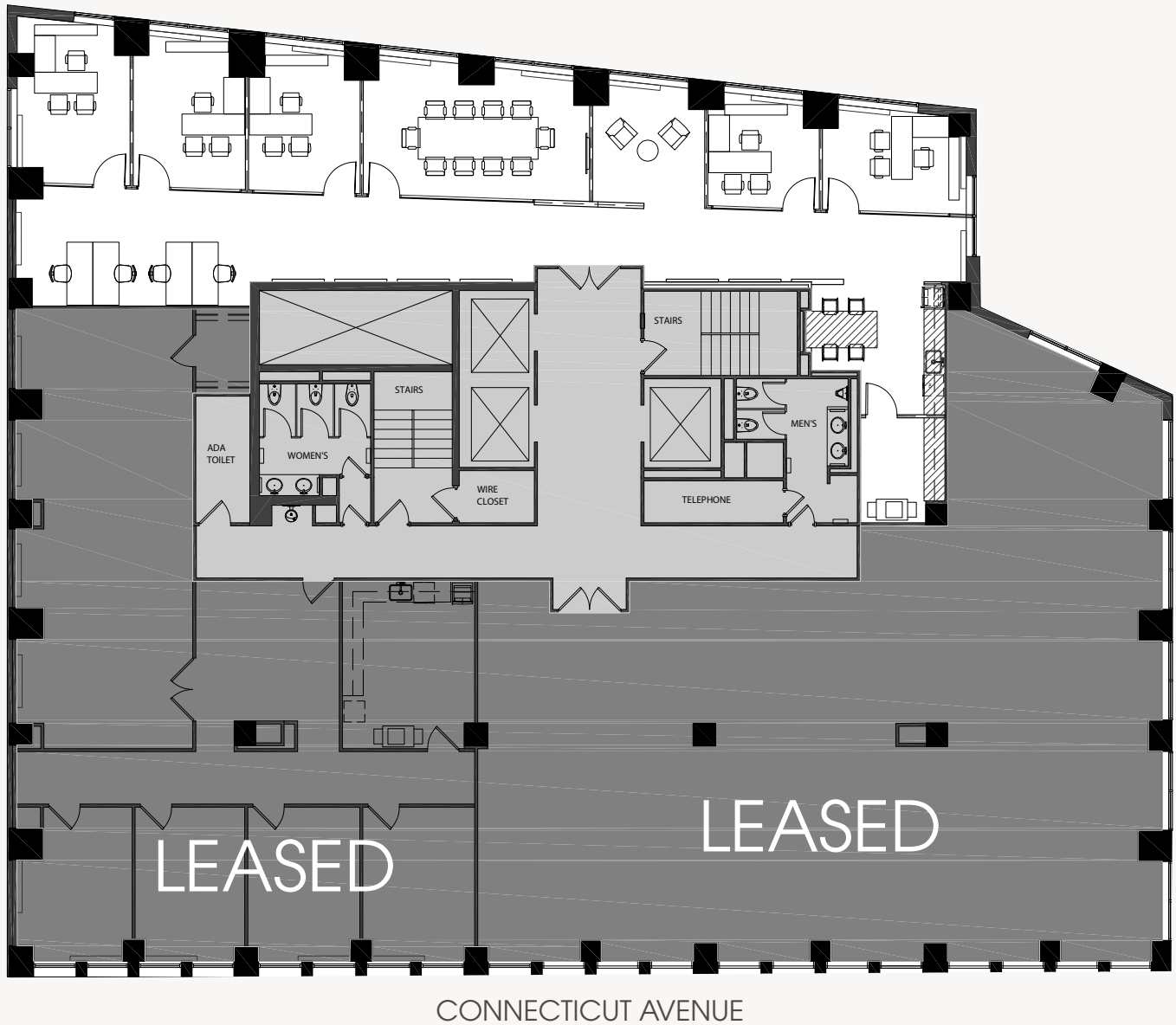
**SUITE 200**  
**7,317 RSF**

For leasing information, contact  
**Carla C. Cavanaugh**  
*Vice President, Commercial Leasing*  
202-617-3122  
[ccavanaugh@borgermanagement.com](mailto:ccavanaugh@borgermanagement.com)

**BORGER**  
MANAGEMENT

# 4TH FLOOR AVAILABILITY

AS-BUILT PLAN



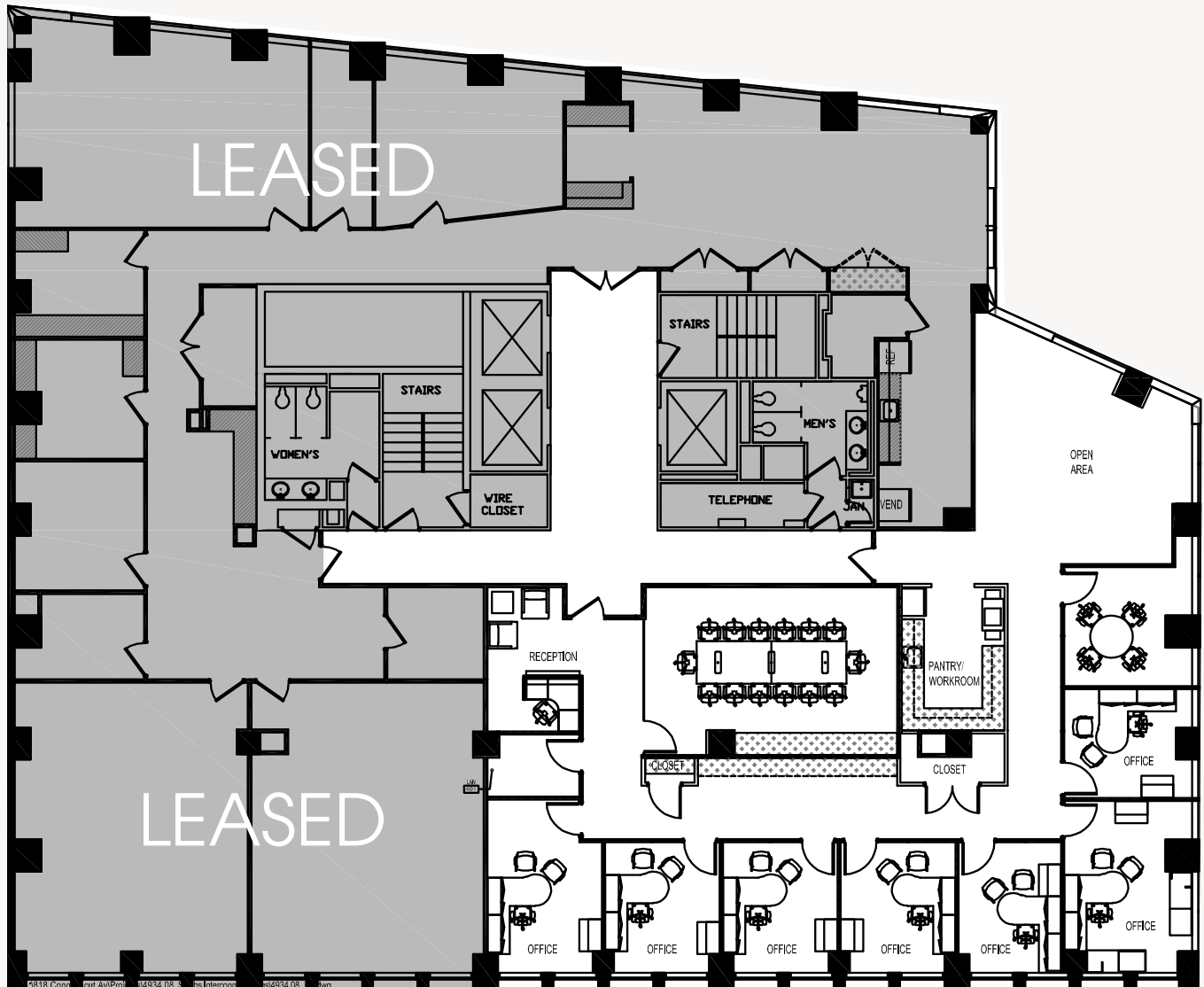
**SUITE 425**  
**2,578 RSF**

For leasing information, contact  
**Carla C. Cavanaugh**  
*Vice President, Commercial Leasing*  
202-617-3122  
[ccavanaugh@borgermanagement.com](mailto:ccavanaugh@borgermanagement.com)

**BORGER**  
MANAGEMENT

# 4TH FLOOR AVAILABILITY

AS-BUILT PLAN



CONNECTICUT AVENUE

**SUITE 450**  
**3,349 RSF**

For leasing information, contact  
**Carla C. Cavanaugh**  
*Vice President, Commercial Leasing*  
202-617-3122  
[ccavanaugh@borgermanagement.com](mailto:ccavanaugh@borgermanagement.com)

**BORGER**  
MANAGEMENT

# 5TH FLOOR AVAILABILITY

## PROPOSED PLAN



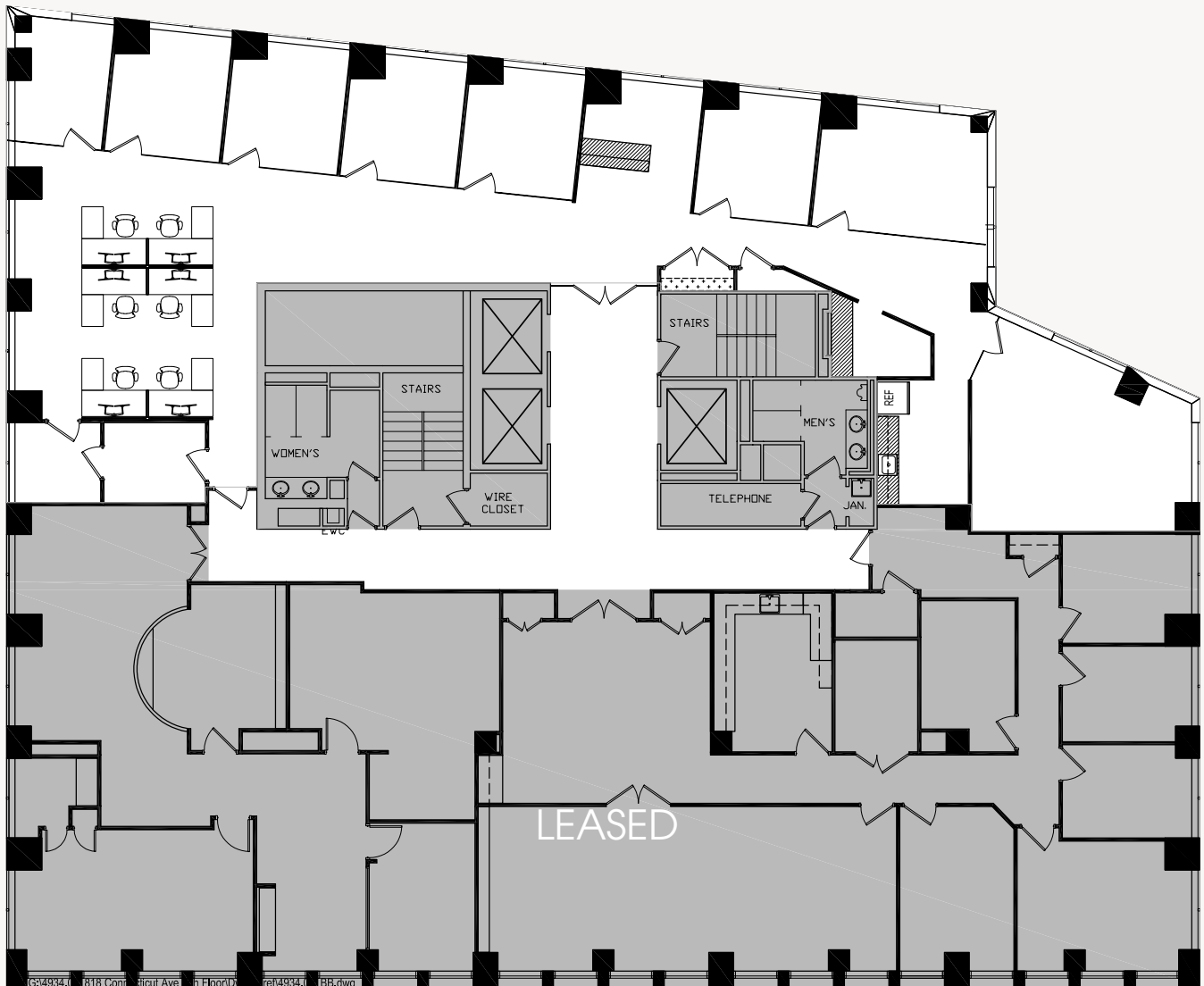
**SUITE 501**  
**2,181 RSF**

For leasing information, contact  
**Carla C. Cavanaugh**  
*Vice President, Commercial Leasing*  
202-617-3122  
[ccavanaugh@borgermanagement.com](mailto:ccavanaugh@borgermanagement.com)

**BORGER**  
MANAGEMENT

# 8TH FLOOR AVAILABILITY

AS-BUILT PLAN



**SUITE 850**  
**3,424 RSF**

CONNECTICUT AVENUE

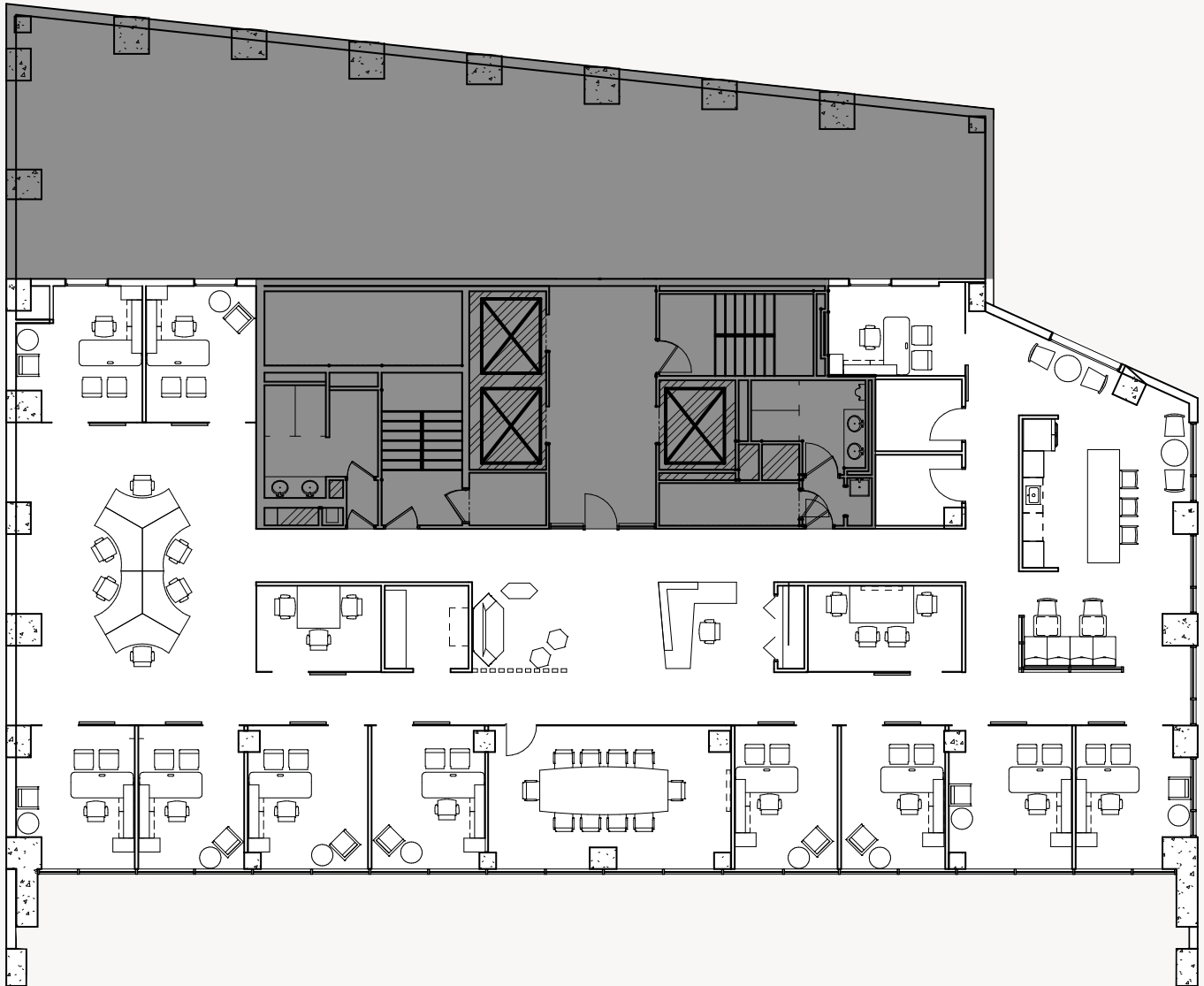
For leasing information, contact  
**Carla C. Cavanaugh**  
*Vice President, Commercial Leasing*  
202-617-3122  
[ccavanaugh@borgermanagement.com](mailto:ccavanaugh@borgermanagement.com)

**BORGER**  
MANAGEMENT



# 12TH FLOOR AVAILABILITY

PROPOSED PLAN



CONNECTICUT AVENUE

**SUITE 1200**  
**5,475 RSF**

For leasing information, contact  
**Carla C. Cavanaugh**  
*Vice President, Commercial Leasing*  
202-617-3122  
[ccavanaugh@borgermanagement.com](mailto:ccavanaugh@borgermanagement.com)

**BORGER**  
MANAGEMENT

# LOCATION & AMENITIES



## RESTAURANTS

1. Equinox
2. The Bombay Club
3. The Oval Room
4. Cafe Soleil
5. Blackfinn Ameripub - DC
6. Brown Bag
7. Loeb's NY Deli
8. The Lafayette
9. McCormick & Schmick's Seafood & Steaks
10. Wicked Waffle
11. The Bottom Line
12. Subway
13. Asia DC
14. Center Court Cafe
15. Noodles & Company

## COFFEE

1. Van Houtte Coffee
2. Teatism Lafayette Park
3. Au Bon Pain
4. Le Pain Quotidien
5. Dunkin Donuts
6. Starbucks
7. Pret a Manger
8. Starbucks
9. Peet's Coffee & Tea
10. Panera Bread
11. Paul
12. Starbucks
13. Cafe' Grande
14. Corner Bakery Cafe
15. Starbucks
16. Havana Cafe

## BANKS

1. J.P. Morgan Private Bank
2. Deutsche Bank AG
3. BB&T
4. Japan Bank for Int'l
5. TD Bank
6. Nacional Financiera Snc
7. Capital One Bank
8. M&T Bank
9. Presidential Bank
10. Bank Fund Staff Federal Credit Union
11. Bank of Korea
12. DVA Federal Credit Union
13. The Capitol Bank

## HOTELS

1. The St. Regis, Washington, DC
2. Hotel Lombardy
3. The W Hotel, Washington, DC



For leasing information, contact  
**Carla C. Cavanaugh**  
*Vice President, Commercial Leasing*  
 202-617-3122  
[ccavanaugh@borgermanagement.com](mailto:ccavanaugh@borgermanagement.com)



THE INFORMATION CONTAINED HEREIN IS BELIEVED TO BE ACCURATE BUT THE LANDLORD OR AGENT DOES NOT WARRANT OR GUARANTY THE ACCURACY AND THEREFORE IS SUBJECT TO CHANGE WITHOUT NOTICE.