

# 720 7TH STREET, NW

WASHINGTON, DC

## AVAILABLE SPACE

THIRD FLOOR	5,249 SF
FOURTH FLOOR	5,249 SF



## PROPERTY HIGHLIGHTS

- SECURED ACCESS
- HISTORIC BOUTIQUE BUILDING
- EXPOSED BRICK
- ANTIQUE TIN CEILINGS
- FULL FLOOR SUITE
- ACROSS FROM CAPITAL ONE ARENA



BRITTANY RICE  
PROPERTY MANAGER

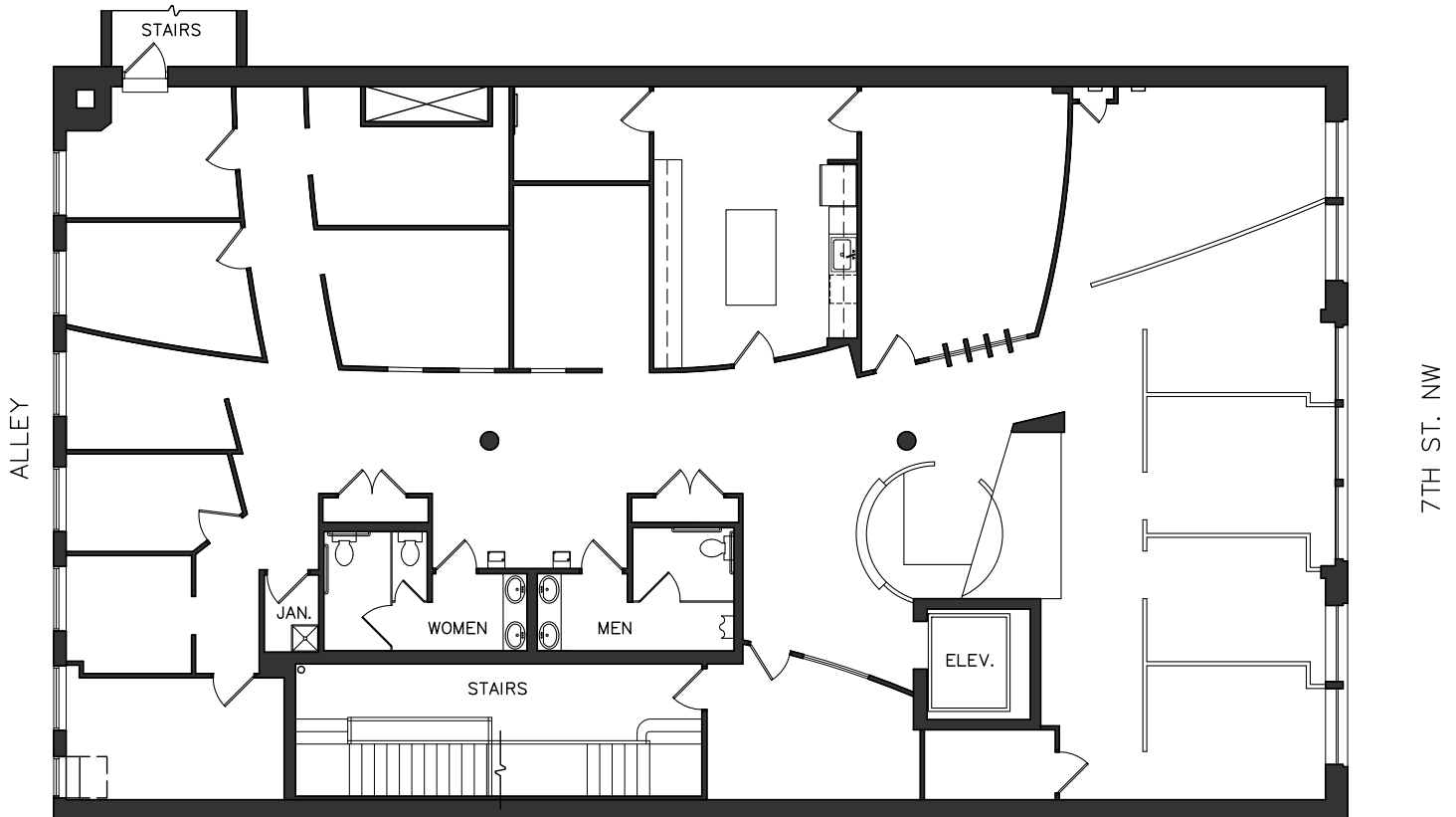
202.349.2793 DIRECT  
BRICE@BORGERMANAGEMENT.COM

# 720 7TH STREET, NW

WASHINGTON, DC

## FLOOR PLAN

3RD FLOOR PLAN



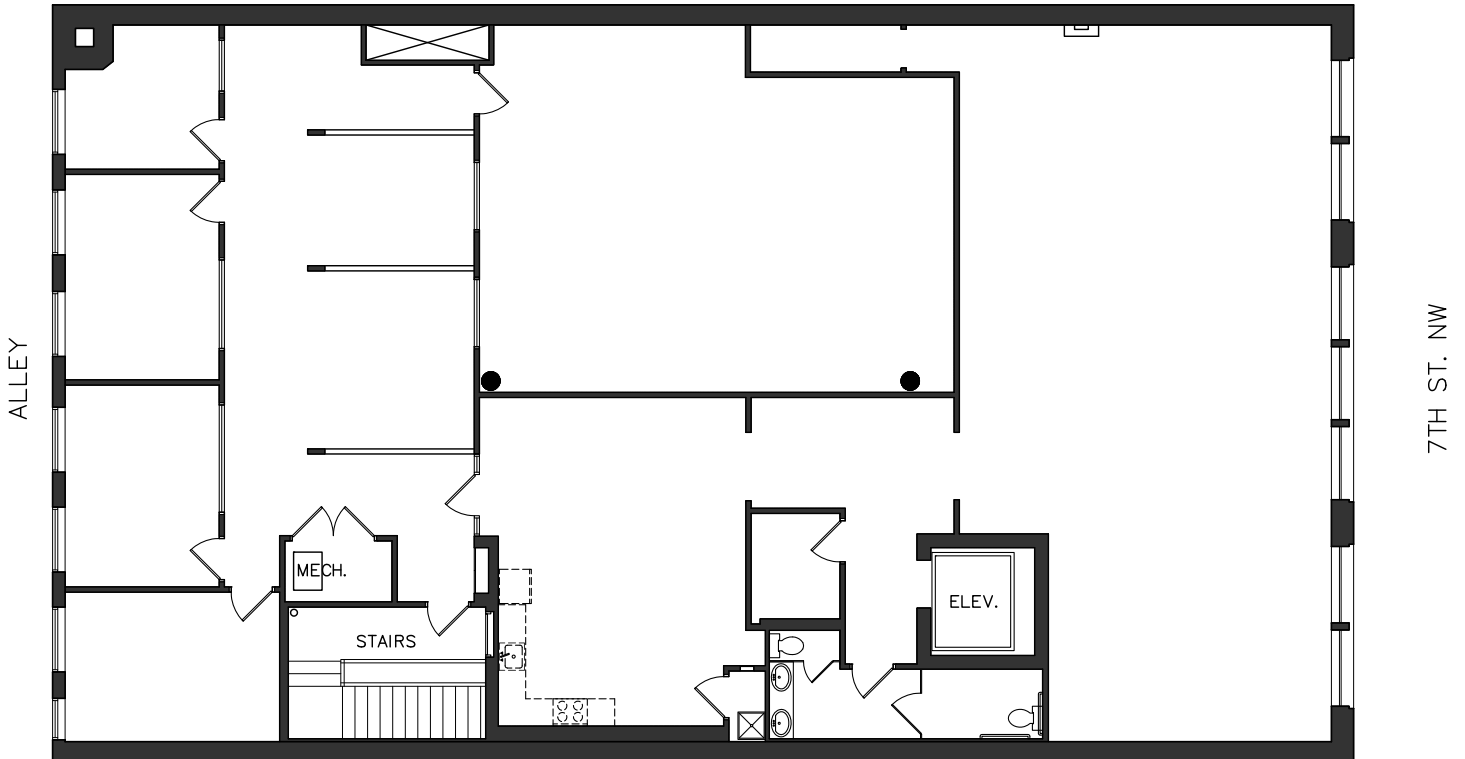
THIS FULL FLOOR SUITE FEATURES EXPOSED CEILINGS AND WINDOWS OVERLOOKING 7TH STREET. THE EXISTING BUILDOUT IS A MIX OF PRIVATE OFFICES AND OPEN WORKSTATIONS, A KITCHEN & BREAKROOM, TWO CONFERENCE ROOMS, AND RECEPTION AREA.

# 720 7TH STREET, NW

WASHINGTON, DC

## FLOOR PLAN

4TH FLOOR PLAN



THIS FULL FLOOR SUITE IS THE TOP FLOOR OF A HISTORIC BOUTIQUE BUILDING IN THE HEART OF THE CHINATOWN NEIGHBORHOOD.

THE 4TH FLOOR FEATURES EXPANSIVE WINDOW LINES ALONG 7TH STREET WITH VIEWS OF CHINATOWN AND CAPITAL ONE ARENA.



# 720 7TH STREET, NW

WASHINGTON, DC

## LOCATION

CHINATOWN

1. ZAYTINYA
2. HIPCITYVEG
3. YARD HOUSE
4. THE SMITH
5. CLYDE'S OF GALLERY PLACE

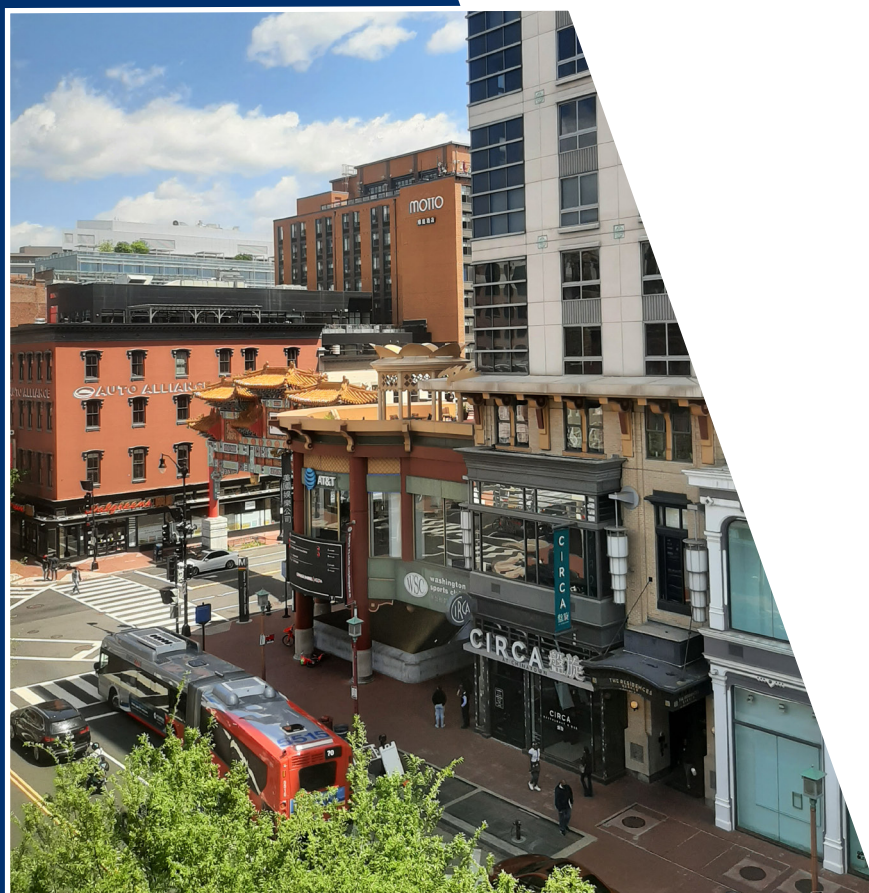
1. HOTEL MONACO
2. FAIRFIELD INN
3. RENAISSANCE
4. GRAND HYATT

WITHIN WALKING DISTANCE OF  
CAPITAL ONE ARENA, CITY CENTER  
DC, NATIONAL PORTRAIT GALLERY,  
THE WARNER THEATER, SHOPS,  
RESTAURANTS, NIGHTLIFE, AND  
MULTIPLE BIKESHARE OPTIONS



**BRITTANY RICE**  
PROPERTY MANAGER

202.349.2793 DIRECT  
BRICE@BORGERMANAGEMENT.COM



VIEWS OF CHINATOWN FROM OFFICE SUITE