

Woman Meets Her Birth Mother after 50 Years, Learns She's An Actress From Her Favorite Show

When Lisa Wright sat down to watch *That's My Mama* every week as a child, she never could have imagined how accurate the title would prove to be.

As an adopted child, Lisa never sought out her biological family. Once she had a child of her own, however, she began investigating.

"My (adoptive) mom told me, 'Your mommy loved you, but she was really young, and she knew she couldn't take care of you. I wanted a baby so bad, and that's why your mom let me take care of you. You weren't abandoned. This was just the best thing for you,'" Lisa said in

an interview with the *Today* show.

Following a DNA test, Lisa was quickly put into touch with members of her biological family – and before long, her biological mother.

"A voice on the other end (of the phone) says, 'Is this my daughter?' And then I just went, 'Oh, my God, is this my mother?'" Lisa said. "And then she goes, 'Yes, sweetie, this is your mom.' It was just the most indescribable feeling."

Lisa would quickly learn that her mother is none other than Lynee Moody – an actress from one of Lisa's favorite shows from childhood.

"I grew up watching my mother on TV and didn't even know it," Wright said. "*That's My Mama* — that was



our must-see TV. We all sat down and watched *That's My Mama* every week, and who knew? No idea.... And that's my mama!"

Original story from people.com

Photo credit: Michael Tullberg/Getty



Happy Birthday!

Residents

Dorothy B.	July 10
Helen N.	July 14
Joanna B.	July 15
James C.	July 19
James S.	July 27
William A.	July 30
Rosemary K.	July 31

Staff

Dawn L.	July 03
Maryam D.	July 06
Taylor M.	July 07
Cierra S.	July 07
Amber B.	July 08
Walterina D.	July 08
Juliana L.	July 09
Valerie G.	July 16
Sarah W.	July 17
Nicole F.	July 17
Makayla B.	July 20
Tammy C.	July 28
Rene K.	July 29

Work Continues for Campus in Color

Our courtyards and front entrance are taking shape as the residents help us with our raised beds and pots. Through a generous donation made by Grace Fellowship: The Chapel, we were able to purchase fountains and décor for each courtyard and the sitting areas at our front entrance. We are grateful for the donation and for the partnership with Pastor Dan Case and The Chapel.



Executive Director Corner

Happy July, everyone!
I hope that you are

enjoying cooling down from the heat and the easing of restrictions, because summer is officially in full swing – and we have a lot to celebrate.

Our “Traditions Around the World” Theme Year continues this month with our latest Theme Week – **France**. Taking place from July 12th – July 15th, this theme week will see our campus filled with blue, white, and red colors as we celebrate the sights, sounds, and smells of France from the comfort of home. Be sure to ask to our Life

Enrichment Director about all of the incredible activities we have planned! *C’est l’heure de faire la fête (It’s party time!)*.

As we begin celebrating our independence from COVID-19, we are also excited to be kicking off our **Independence from Hunger** food drive.

Over the course of the past 5 years, we have been able to raise more than 7.3 million pounds of food to support local food banks across the Midwest. Talk to a team member today to learn about how you can participate!

Have a great month,

Valerie Griggs
Executive Director



FEATURED VOLUNTEER: RUTH M.



One of our Independent Living Residents, Ruth is now serving as an “official” volunteer although she has been an unofficial volunteer since she moved to Violet Springs. She has a huge heart and is known for her kindness. Take a minute to learn about this special lady.

Born in her home, Ruth is a Columbus native. She attended St. Mary’s of the Spring Academy and did cooking demonstrations at the Lazarus Department Store. Ruth also served as a volunteer, teaching 8th grade girls to cook. Ruth and her husband Robert were married for 58 years, and they have four children all with “K” names! She is a talented crafter and can even make beautiful stained glass. Dancing is another talent our sweet Ruth has. She did tap, acrobatics, ballet, and toe from grade school to high school. Is there anything she cannot do?

When asked why she wanted to volunteer at Violet Springs, she said, “Why? I just like to be around people and help a little if I can.” Ruth is a blessing to our team and to all our residents. Thank you, Ruth!



Legacy Lane Artists

Our Legacy residents always enjoy art! Each day, residents are encouraged to exercise their artistic flare, and they create unique and lovely works of art. We will be hosting our second annual art gala later this year, and we cannot wait to show off the talent of our Legacy Residents. Stay tuned for more details about this upcoming event.

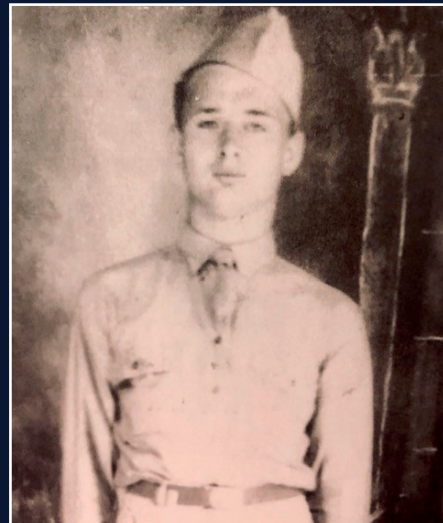
Carnaval!

Theme week was a great success! Our residents loved our “trip to South America” which included a Batucada drumming session, Chair Somba, Brazilian folk songs, and a fantastic Carnaval Dinner. Thursday’s dinner kicked off with the Grand Re-Opening of our Health Center Dining Room. We were pleased to have our youngest and oldest residents, Bobbi B. and Marvine W., cut the ribbon and welcome residents back into the dining room. Elaborate centerpieces and decorations set the stage for a Brazilian feast and lots of fun!



Resident Spotlight: Jim S.

Born and raised in Jasper, Ohio, Jim is a World War II Veteran. He served in the Air Force for three years in Italy and North Africa during the war. He was happily married for 57 years to Hazel, the love of his life. Jim worked at Greenlawn Cemetery for 45 years and was a Special Deputy Sheriff for Franklin County. Jim’s favorite type of music is Blue Grass; he loves Bill Monroe. Every morning, Jim reads the Columbus Dispatch while drinking his coffee. He is everyone’s favorite flirt as he tells all the women in the building, “You make me feel 20 years younger!” Make sure to get to know this fabulous gentleman from the Greatest Generation.





VIOLET SPRINGS

HEALTH CAMPUS

A Trilogy Senior Living Community

603 Diley Rd
Pickerington, OH 43147
614-751-6413
violetspringshc.com |

Valerie Griggs
Executive Director

Makayla Buckner
Director of Environmental Services

Erin Hiestand
Director of Food Services

Sandi Di Toma
Life Enrichment Director

Mike Kadri
Director of Plant Operations

Joanna Hughes
Social Services Director

Tiffany Lucas
Therapy Program Director

Stay in the Loop

Keep up with latest campus news
and happenings by following
us on your favorite social networks!

*We strive to provide the best customer
service and quality care for our residents.*

*Our Department Leaders are here
to solve any concerns you may have.*

*In the event that you need further
assistance with any unresolved concerns,
we encourage you to call or email
our Compliance Hotline: 800-908-8618,
ext. 2800; or comply@trilogyhs.com*

Newsletter Production by PorterOneDesign.com

Monthly Trivia & Activity Corner

All trivia answers will be printed in our upcoming month's newsletter!

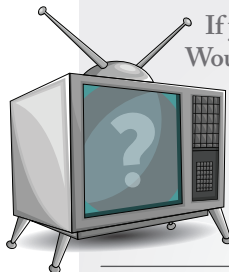
Question 1: *The Fourth of July celebrates the adoption of what historic document?*

Question 2: *What is the name of the largest planet in our solar system?*

Question 3: *What is the name of the local jazz group that performed "I Don't Want To Set The World On Fire"?*

Question 4: *In what year was the 19th amendment ratified?*

Question 5: *On what day does the summer solstice occur?*



If you could create a TV show, what would it be?
Would it be a sitcom? Game show? Crime drama?
About animals? Or something new?
Write a brief description and share your ideas.

*Flip the page for last
month's trivia answers:*

Q1: What river runs through the Grand Canyon? The Colorado River
Q2: The world's first vaccine was developed to fight which disease? Polio
Q3: The ocean covers more than ____% of the earth's surface. 70
Q4: What was the name of Lucy's neighbor in I Love Lucy? Carolyn Appleby
Q5: What is the name of the largest freshwater lake in the world? The Caspian Sea

Word Search

H	A	Y	A	K	H	P	Z	S	H	O	W	I	S	A	C	D	Q	X
Y	N	N	P	X	Z	D	A	U	G	H	T	E	R	C	S	I	K	G
H	X	D	L	A	O	M	C	Q	D	J	F	T	D	C	M	N	I	C
N	S	Z	B	P	A	D	C	M	M	D	T	A	S	U	L	R	U	R
J	W	M	U	M	E	K	U	F	A	M	I	L	Y	Q	O	H	G	Q
X	H	Q	Y	T	F	B	R	D	Y	U	T	E	Z	E	V	R	Z	L
Q	E	K	S	S	E	J	A	U	F	L	K	A	F	K	E	L	L	I
L	R	T	P	W	D	L	T	V	A	N	F	R	C	H	N	K	W	T
F	A	V	O	R	I	T	E	C	D	S	O	G	T	T	P	F	C	D
T	H	F	W	Y	W	U	I	V	E	I	Q	O	Z	D	R	H	R	A
B	K	J	M	Q	W	G	Q	I	I	A	M	L	O	X	T	E	L	F
T	E	M	H	C	O	C	F	C	C	S	J	A	F	A	F	C	S	I
F	O	Z	M	L	Y	T	V	V	B	W	I	H	G	G	R	W	V	S
M	R	T	O	J	Q	G	J	S	N	P	A	O	D	I	D	A	A	T
S	Q	I	T	M	V	C	H	I	L	D	S	G	N	V	N	U	M	G
P	B	C	S	W	V	R	C	O	S	S	E	A	D	T	N	E	J	Y
R	S	E	I	L	I	M	W	O	L	K	V	O	I	C	E	E	G	S
I	N	T	E	R	V	I	E	W	H	E	T	C	U	I	G	E	S	U
L	Y	S	H	D	Z	O	S	F	M	C	C	H	G	U	R	M	S	N

ACCURATE
ACTRESS
BIOLOGICAL
CHILD

DAUGHTER
FAMILY
FAVORITE
IMAGINE

INTERVIEW
LOVE
MAMA
MOMMY

MOTHER
SHOW
TELEVISION
VOICE