



VILLAGE GREEN

HEALTH CAMPUS

A Trilogy Senior Living Community

# Gazette

April 2021

## Happy Birthday!

### Residents

Connie H.	4/08
Virgie D.	4/30

## Taste of the Town

Easter Basket Silent

Auction 3/29-4/5

Taste of the Town 4/1 Hardee's

Sunday Family Brunch

Drive Thru 4/11

Spring into  
Campus In Color  
Coming Soon!

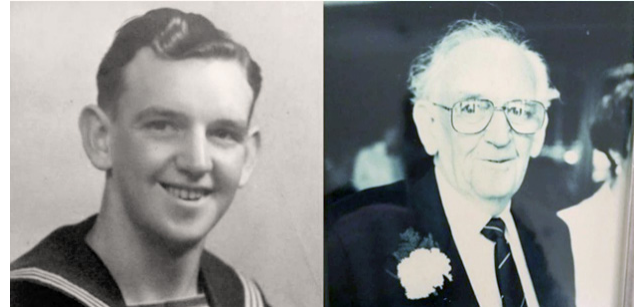


## UK Family receives World War II-era Letter 77 Years After it was Sent

Everyone appreciates receiving letters from a loved one – even if they don't arrive exactly on time. When the family of Bill Baldwin, a now-passed World War II veteran, received a message from a distant relative, they were shocked to learn that they had received a unique letter specifically addressed to their childhood home. Written in Bill's handwriting, the letter was dated as having come from the year 1943.

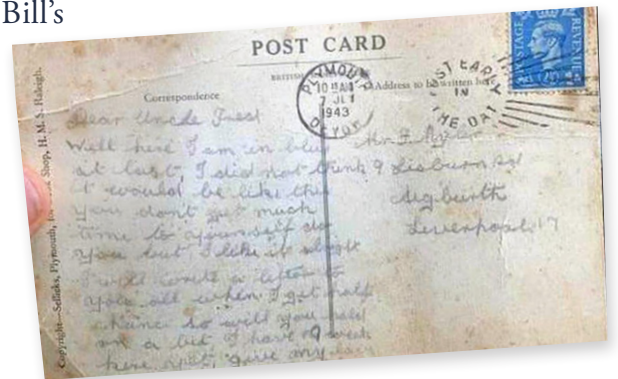
"It was the most surreal thing on a Friday night to suddenly read a postcard that dad had written 77 years ago when he was training to be a sailor in the Navy," said Bill's daughter, Joanna Creamer.

The Royal Mail admits that they don't know why the delivery took so long, but they speculate that the letter had been found and reposted. Having concluded his naval career with four medals from his time spent in Europe, the Pacific, Japan,



and Australia, Bill's words tell the story of a young man whose journey in the service was just beginning:

"Well I am in blue at last. I did not think it would be like this—you don't get much time for yourself, do you? But I like it alright. I will write a letter to you all when I get half a chance so will you hold on a bit? I have 19 weeks here yet. Give my love to everyone. Love, Bill."



Images provided by the family of Bill Caldwell. Original story from Good News Network.



# VILLAGE GREEN

HEALTH CAMPUS

*A Trilogy Senior Living Community*

1315 KitchenAid Way  
Greenville, OH 45331  
937-548-1993

villagegreenhc.com |

*Annie Carico*  
Executive Director

*Nita Walker*  
Director of Health Services

*Tonya Kelly*  
MDS Nurse

*Jamie Welch*  
Community Services Representative

*Cheryl Stump*  
Business Office Manager

*Chelsea Myers*  
Life Enrichment Director

*Sherry McClain*  
Social Services Director

*Tony Dirksen*  
Director of Plant Operations

*Jacob Carico*  
Director of Dining Services

*Natasha Sizemore*  
Environmental Services Director

*Casey Steinbrenner*  
Therapy Director

*Jen Shurelds*  
AL/Legacy Coordinator

## Stay in the Loop

Keep up with latest campus news and happenings by following us on your favorite social networks!

*We strive to provide the best customer service and quality care for our residents.*

*Our Department Leaders are here to solve any concerns you may have.*

*In the event that you need further assistance with any unresolved concerns, we encourage you to call or email our Compliance Hotline: 800-908-8618, ext. 2800; or [comply@trilogyhs.com](mailto:comply@trilogyhs.com)*

*Newsletter Production by [PorterOneDesign.com](http://PorterOneDesign.com)*

# Monthly Trivia & Activity Corner

*All trivia answers will be printed in our upcoming month's newsletter!*

**Question 1:** According to many historians, which animals were the first to be domesticated?

**Question 2:** What was the name of the U.S. president who served as commander-in-chief for only 31 days?

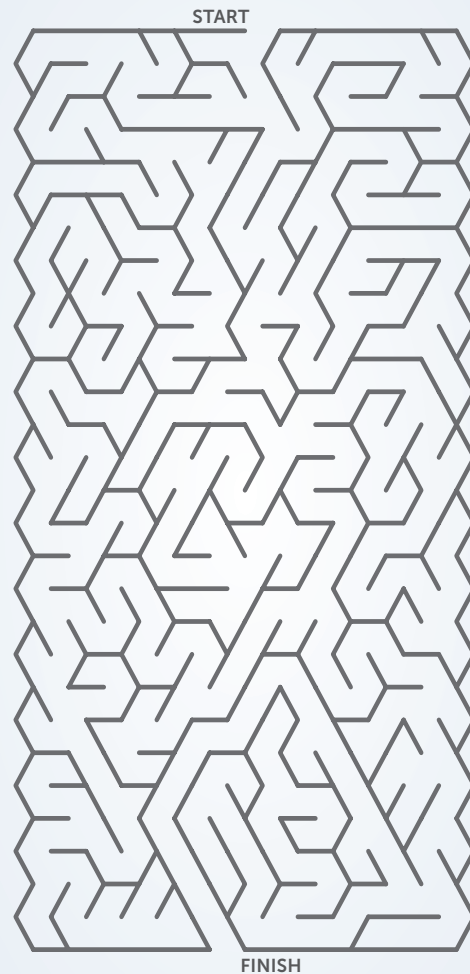
**Question 3:** What year did the first Space Shuttle go into space?

**Question 4:** What is the main color of the United Nations' flag?

**Question 5:** True or false: dogs can only see in black and white.

*Flip the page for last month's trivia answers:*

- Q1: What color is the 'M' in McDonalds? Yellow
- Q2: True or false: Ronald Reagan was once an actor. True
- Q3: What does the Latin phrase "carpe diem" translate to in English? Seize the day
- Q4: What city was the Declaration of Independence signed in? Philadelphia
- Q5: How many legs do spiders have? Eight



## Word Search

Z	R	H	U	C	U	X	B	Z	L	G	Y	F	A	S	U	R	G	D
H	A	M	O	C	B	S	B	A	P	W	N	C	H	R	O	F	A	B
J	J	K	W	M	Q	S	K	H	Y	V	A	S	B	L	C	Q	D	T
W	J	L	F	G	T	O	S	L	O	V	R	W	I	T	P	N	X	C
K	T	G	S	B	T	R	T	E	C	Y	O	A	A	J	L	J	F	T
C	W	Y	L	V	A	T	R	T	R	H	S	R	F	L	Z	B	K	B
D	N	Y	I	Q	Q	B	A	T	Q	V	I	S	C	L	C	Y	J	V
X	C	D	J	M	X	T	V	E	Y	A	I	L	N	Z	R	D	C	Z
A	H	I	Z	V	E	T	E	R	A	N	E	C	D	E	E	R	G	I
U	L	S	B	Z	O	P	L	S	Y	E	L	Q	E	H	R	Y	R	N
W	F	T	H	M	H	R	O	D	Z	Y	N	R	D	Y	O	N	Y	M
D	P	A	D	W	M	R	M	S	M	I	A	A	M	O	X	O	I	E
Y	E	N	X	M	D	Z	V	D	T	C	X	J	V	B	K	V	D	D
U	Y	C	K	M	O	E	G	F	C	C	J	O	D	Y	K	V	L	A
I	M	E	S	S	A	G	E	T	M	Z	A	U	B	E	E	P	U	L
V	A	C	K	Q	B	D	E	L	I	V	E	R	Y	Q	M	I	C	S
E	I	D	U	C	U	G	Z	R	I	T	V	N	D	M	R	R	B	E
K	L	U	P	S	D	S	D	A	W	L	R	E	P	U	P	I	H	U
H	Y	B	M	Y	L	T	T	D	K	Q	P	Y	Q	R	B	C	F	O

CAREER  
CHILDHOOD  
DELIVERY  
DISTANCE

JOURNEY  
LETTERS  
MAIL  
MEDALS

MESSAGE  
NAVY  
POSTCARD  
SAILOR

SERVICE  
TRAVEL  
VETERAN  
WAR