

Happy Birthday!

Residents

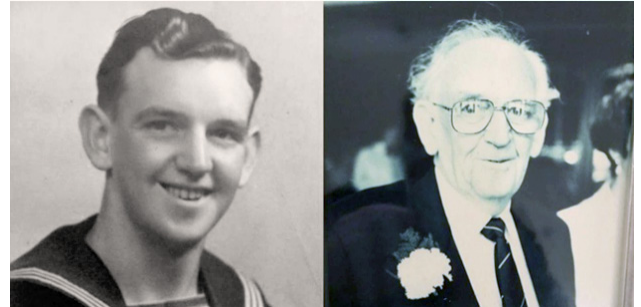
Marilyn A.	4/02
Robert B.	4/05
Martha K.	4/14
Anna P.	4/18
Martha M.	4/20

UK Family receives World War II-era Letter 77 Years After it was Sent

Everyone appreciates receiving letters from a loved one – even if they don't arrive exactly on time. When the family of Bill Baldwin, a now-passed World War II veteran, received a message from a distant relative, they were shocked to learn that they had received a unique letter specifically addressed to their childhood home. Written in Bill's handwriting, the letter was dated as having come from the year 1943.

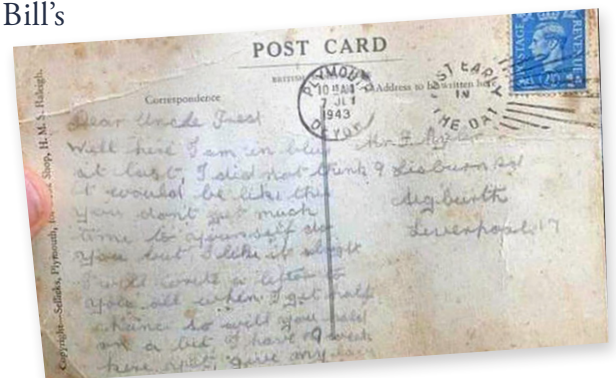
"It was the most surreal thing on a Friday night to suddenly read a postcard that dad had written 77 years ago when he was training to be a sailor in the Navy," said Bill's daughter, Joanna Creamer.

The Royal Mail admits that they don't know why the delivery took so long, but they speculate that the letter had been found and reposted. Having concluded his naval career with four medals from his time spent in Europe, the Pacific, Japan,



and Australia, Bill's words tell the story of a young man whose journey in the service was just beginning:

"Well I am in blue at last. I did not think it would be like this—you don't get much time for yourself, do you? But I like it alright. I will write a letter to you all when I get half a chance so will you hold on a bit? I have 19 weeks here yet. Give my love to everyone. Love, Bill."



*Images provided by the family of Bill Caldwell.
Original story from Good News Network.*

*Spring into
Campus In Color*
Coming Soon!



188 Thornton Road
Hanover, IN 47243
812-866-8396
thorntonterracehc.com |  

Michelle Weber
Executive Director

Kris Fultz
Director of Health Services

Lisa Crawford
Business Office Manager

Megan Carlton
Life Enrichment Director

Keith Morris
Director of Plant Operations

Jill Neuman
Community Service Representative

Bridget McIntosh
Social Services Director

Alex Wenning
Director of Dining Services

Tayra Crawford
Environmental Services Director

Kristi Scroggins
Program Director

Jennifer Ross
Legacy Lane Coordinator

Stay in the Loop

Keep up with latest campus news
and happenings by following
us on your favorite social networks!

We strive to provide the best customer
service and quality care for our residents.

Our Department Leaders are here
to solve any concerns you may have.

In the event that you need further
assistance with any unresolved concerns,
we encourage you to call or email
our Compliance Hotline: 800-908-8618,
ext. 2800; or comply@trilogyhs.com

Newsletter Production by PorterOneDesign.com

Monthly Trivia & Activity Corner

All trivia answers will be printed
in our upcoming month's newsletter!

Question 1: According to many
historians, which animals were the
first to be domesticated?

Question 2: What was the name of
the U.S. president who served as
commander-in-chief for only 31 days?

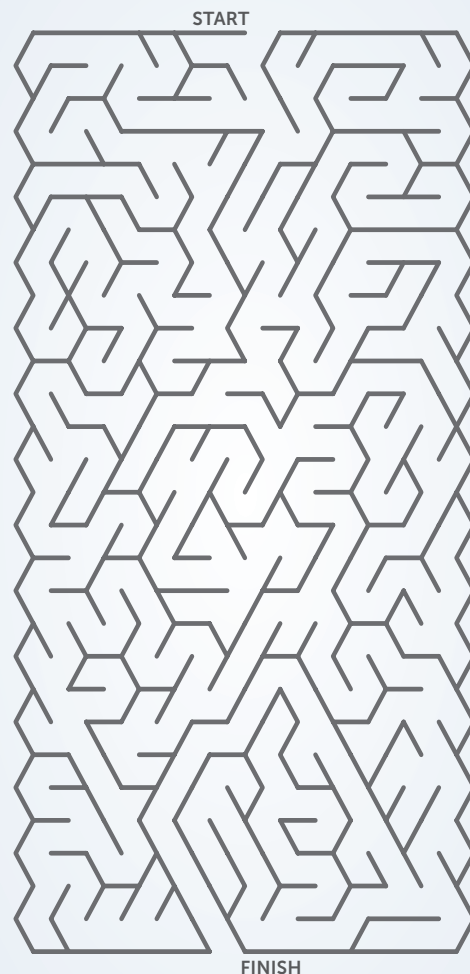
Question 3: What year did the first
Space Shuttle go into space?

Question 4: What is the main color
of the United Nations' flag?

Question 5: True or false: dogs can only
see in black and white.

Flip the page for last month's trivia answers:

Q1: What color is the 'M' in McDonalds? Yellow
Q2: True or false: Ronald Reagan was once an
actor. True
Q3: What does the Latin phrase "carpe diem"
translate to in English? Seize the day
Q4: What city was the Declaration of Independence
signed in? Philadelphia
Q5: How many legs do spiders have? Eight



Word Search

Z	R	H	U	C	U	X	B	Z	L	G	Y	F	A	S	U	R	G	D
H	A	M	O	C	B	S	B	A	P	W	N	C	H	R	O	F	A	B
J	J	K	W	M	Q	S	K	H	Y	V	A	S	B	L	C	Q	D	T
W	J	L	F	G	T	O	S	L	O	V	R	W	I	T	P	N	X	C
K	T	G	S	B	T	R	T	E	C	Y	O	A	A	J	L	J	F	T
C	W	Y	L	V	A	T	R	T	R	H	S	R	F	L	Z	B	K	B
D	N	Y	I	Q	Q	B	A	T	Q	V	I	S	C	L	C	Y	J	V
X	C	D	J	M	X	T	V	E	Y	A	I	L	N	Z	R	D	C	Z
A	H	I	Z	V	E	T	E	R	A	N	E	C	D	E	E	R	G	I
U	L	S	B	Z	O	P	L	S	Y	E	L	Q	E	H	R	Y	R	N
W	F	T	H	M	H	R	O	D	Z	Y	N	R	D	Y	O	N	Y	M
D	P	A	D	W	M	R	M	S	M	I	A	A	M	O	X	O	I	E
Y	E	N	X	M	D	Z	V	D	T	C	X	J	V	B	K	V	D	D
U	Y	C	K	M	O	E	G	F	C	C	J	O	D	Y	K	V	L	A
I	M	E	S	S	A	G	E	T	M	Z	A	U	B	E	E	P	U	L
V	A	C	K	Q	B	D	E	L	I	V	E	R	Y	Q	M	I	C	S
E	I	D	U	C	U	G	Z	R	I	T	V	N	D	M	R	R	B	E
K	L	U	P	S	D	S	D	A	W	L	R	E	P	U	P	I	H	U
H	Y	B	M	Y	L	T	T	D	K	Q	P	Y	Q	R	B	C	F	O

CAREER
CHILDHOOD
DELIVERY
DISTANCE

JOURNEY
LETTERS
MAIL
MEDALS

MESSAGE
NAVY
POSTCARD
SAILOR

SERVICE
TRAVEL
VETERAN
WAR