



THE WILLOWS  
AT SPRINGHURST

*A Trilogy Senior Living Community*

# News

April 2021

## Upcoming Events

4/01 April Fool's Day!

4/02 Inspirational: Good  
Friday Observance

4/05 Artisan: National  
Dandelion Day Craft

4/07 World Health Day/  
National Walking Day

4/12 Creative Cooking:  
National Grilled Cheese Day

4/13 Scrabble Day!

4/22 Earth Day Observation

4/27 Learn Morse Code

4/28 Be a Superhero!

4/30 Arbor Day

*Spring into  
Campus In Color*  
**Coming Soon!**

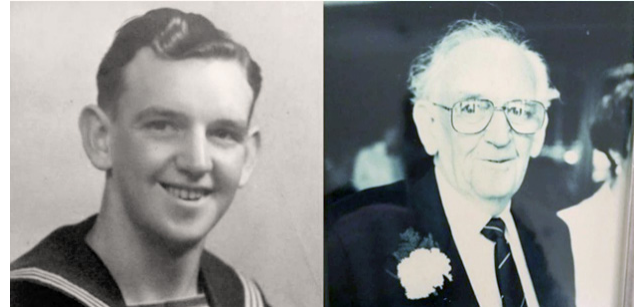


## UK Family receives World War II-era Letter 77 Years After it was Sent

Everyone appreciates receiving letters from a loved one – even if they don't arrive exactly on time. When the family of Bill Baldwin, a now-passed World War II veteran, received a message from a distant relative, they were shocked to learn that they had received a unique letter specifically addressed to their childhood home. Written in Bill's handwriting, the letter was dated as having come from the year 1943.

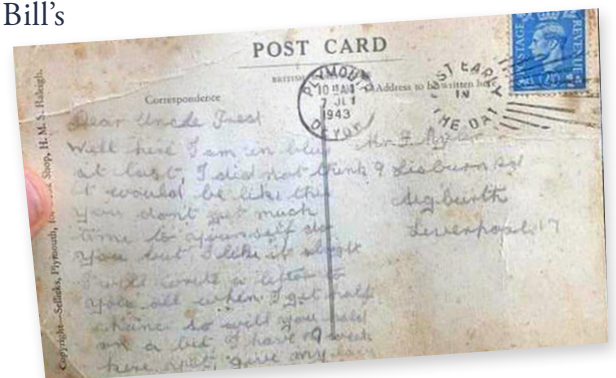
"It was the most surreal thing on a Friday night to suddenly read a postcard that dad had written 77 years ago when he was training to be a sailor in the Navy," said Bill's daughter, Joanna Creamer.

The Royal Mail admits that they don't know why the delivery took so long, but they speculate that the letter had been found and reposted. Having concluded his naval career with four medals from his time spent in Europe, the Pacific, Japan,



and Australia, Bill's words tell the story of a young man whose journey in the service was just beginning:

"Well I am in blue at last. I did not think it would be like this—you don't get much time for yourself, do you? But I like it alright. I will write a letter to you all when I get half a chance so will you hold on a bit? I have 19 weeks here yet. Give my love to everyone. Love, Bill."



*Images provided by the family of Bill Caldwell.  
Original story from Good News Network.*



# THE WILLOWS AT SPRINGHURST

*A Trilogy Senior Living Community*

**3101 North Hurstbourne Pkwy**

**Louisville, KY 40241**

**502-412-3775**

**willowsatspringhurst.com |  **

*Carla Sieckert*  
**Executive Director  
of Health & Rehab**

*Jessica Klausing*  
**Director of Health Services**

*Kaitlyn Hudgens*  
**Director of Social Services**

*Melissa Cusick*  
**Life Enrichment Director**

*Kara Henderson*  
**Director of Therapy**

*Bri Jarboe*  
**Director of Marketing**

*Tim Bridges*  
**Director of Food Service**

*Tommy Roberts*  
**Chief Engineer**

*Charlie Brickley*  
**Director of Plant Operations**

*Kathy Jones*  
**Environmental Services Director**

*We strive to provide the best customer  
service and quality care for our residents.*

*Our Department Leaders are here  
to solve any concerns you may have.*

*In the event that you need further  
assistance with any unresolved concerns,  
we encourage you to call or email  
our Compliance Hotline: 800-908-8618,  
ext. 2800; or [comply@trilogyhs.com](mailto:comply@trilogyhs.com)*

*Newsletter Production by PorterOneDesign.com*

## Monthly Trivia & Activity Corner

*All trivia answers will be printed  
in our upcoming month's newsletter!*

**Question 1:** According to many  
historians, which animals were the  
first to be domesticated?

**Question 2:** What was the name of  
the U.S. president who served as  
commander-in-chief for only 31 days?

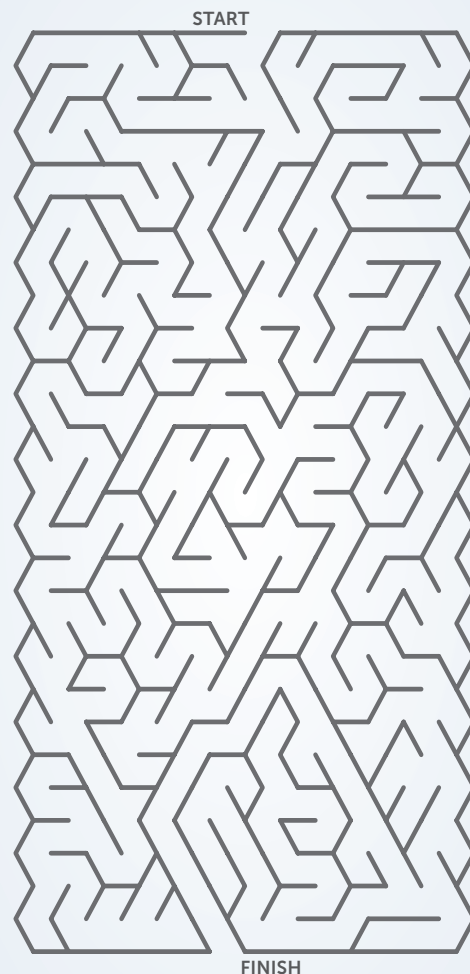
**Question 3:** What year did the first  
Space Shuttle go into space?

**Question 4:** What is the main color  
of the United Nations' flag?

**Question 5:** True or false: dogs can only  
see in black and white.

*Flip the page for last month's trivia answers:*

Q1: What color is the 'M' in McDonalds? Yellow  
Q2: True or false: Ronald Reagan was once an  
actor. True  
Q3: What does the Latin phrase "carpe diem"  
translate to in English? Seize the day  
Q4: What city was the Declaration of Independence  
signed in? Philadelphia  
Q5: How many legs do spiders have? Eight



## Word Search

Z	R	H	U	C	U	X	B	Z	L	G	Y	F	A	S	U	R	G	D
H	A	M	O	C	B	S	B	A	P	W	N	C	H	R	O	F	A	B
J	J	K	W	M	Q	S	K	H	Y	V	A	S	B	L	C	Q	D	T
W	J	L	F	G	T	O	S	L	O	V	R	W	I	T	P	N	X	C
K	T	G	S	B	T	R	T	E	C	Y	O	A	A	J	L	J	F	T
C	W	Y	L	V	A	T	R	T	R	H	S	R	F	L	Z	B	K	B
D	N	Y	I	Q	Q	B	A	T	Q	V	I	S	C	L	C	Y	J	V
X	C	D	J	M	X	T	V	E	Y	A	I	L	N	Z	R	D	C	Z
A	H	I	Z	V	E	T	E	R	A	N	E	C	D	E	E	R	G	I
U	L	S	B	Z	O	P	L	S	Y	E	L	Q	E	H	R	Y	R	N
W	F	T	H	M	H	R	O	D	Z	Y	N	R	D	Y	O	N	Y	M
D	P	A	D	W	M	R	M	S	M	I	A	A	M	O	X	O	I	E
Y	E	N	X	M	D	Z	V	D	T	C	X	J	V	B	K	V	D	D
U	Y	C	K	M	O	E	G	F	C	C	J	O	D	Y	K	V	L	A
I	M	E	S	S	A	G	E	T	M	Z	A	U	B	E	E	P	U	L
V	A	C	K	Q	B	D	E	L	I	V	E	R	Y	Q	M	I	C	S
E	I	D	U	C	U	G	Z	R	I	T	V	N	D	M	R	R	B	E
K	L	U	P	S	D	S	D	A	W	L	R	E	P	U	P	I	H	U
H	Y	B	M	Y	L	T	T	D	K	Q	P	Y	Q	R	B	C	F	O

**CAREER  
CHILDHOOD  
DELIVERY  
DISTANCE**

**JOURNEY  
LETTERS  
MAIL  
MEDALS**

**MESSAGE  
NAVY  
POSTCARD  
SAILOR**

**SERVICE  
TRAVEL  
VETERAN  
WAR**