

Happy Birthday!

Residents

Jean S.	4/03
Doris T.	4/04
Richard S.	4/16
Bobby C.	4/18
Joyce P.	4/20
Alyce C.	4/22
Don P.	4/21
Alyce C.	4/22
Max S.	4/23
Raymond L.	4/28
Michael C.	4/29

Upcoming Events

**April 01: Easter Craft,
Easter Virtual Service**

**April 02: Easter Bingo,
Easter Happy Hour**

**April 04: Easter Bible Readings,
Easter Church Video**

*Spring into
Campus In Color*
Coming Soon!

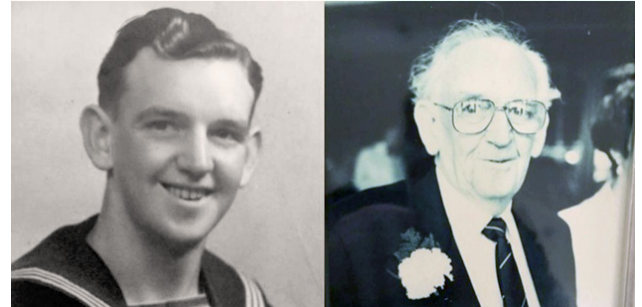


UK Family receives World War II-era Letter 77 Years After it was Sent

Everyone appreciates receiving letters from a loved one – even if they don't arrive exactly on time. When the family of Bill Baldwin, a now-passed World War II veteran, received a message from a distant relative, they were shocked to learn that they had received a unique letter specifically addressed to their childhood home. Written in Bill's handwriting, the letter was dated as having come from the year 1943.

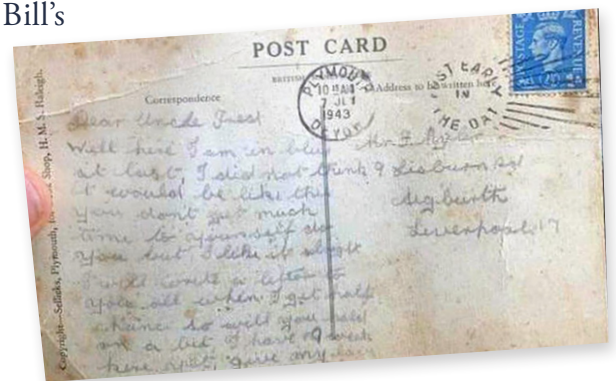
"It was the most surreal thing on a Friday night to suddenly read a postcard that dad had written 77 years ago when he was training to be a sailor in the Navy," said Bill's daughter, Joanna Creamer.

The Royal Mail admits that they don't know why the delivery took so long, but they speculate that the letter had been found and reposted. Having concluded his naval career with four medals from his time spent in Europe, the Pacific, Japan,



and Australia, Bill's words tell the story of a young man whose journey in the service was just beginning:

"Well I am in blue at last. I did not think it would be like this—you don't get much time for yourself, do you? But I like it alright. I will write a letter to you all when I get half a chance so will you hold on a bit? I have 19 weeks here yet. Give my love to everyone. Love, Bill."



*Images provided by the family of Bill Caldwell.
Original story from Good News Network.*



STONEGATE

HEALTH CAMPUS

A Trilogy Senior Living Community

2525 DeMille Boulevard

Lapeer, MI 48446

810-245-9300

stonegatehc.com |  

Marcus Badia
Executive Director

Debbie Chua
Director of Health Services

Shelby Clark
Assistant Director of Health Services

Lisa Dunn
Community Services Representative

Kim Evans
Customer Service Specialist

Sherrie Guttowsky
Business Office Manager

Brandon Birkner
Life Enrichment Director

Ken Doyka
Director of Plant Operations

Eric Schwark
Director of Dining Services

Devon Payne
Director of Environmental Services

Cristene English
MDS Coordinator

TBD
Director of Assisted Living

Misty Martin
AP/Payroll

Naomi Taylor
Director of Social Services

Adam Ahlgren
Director of Therapy

Stay in the Loop  

Keep up with latest campus news
and happenings by following
us on your favorite social networks!

*We strive to provide the best customer
service and quality care for our residents.*

*Our Department Leaders are here
to solve any concerns you may have.*

*In the event that you need further
assistance with any unresolved concerns,
we encourage you to call or email
our Compliance Hotline: 800-908-8618,
ext. 2800; or comply@trilogyhs.com*

Newsletter Production by PorterOneDesign.com

Monthly Trivia & Activity Corner

*All trivia answers will be printed
in our upcoming month's newsletter!*

Question 1: According to many
historians, which animals were the
first to be domesticated?

Question 2: What was the name of
the U.S. president who served as
commander-in-chief for only 31 days?

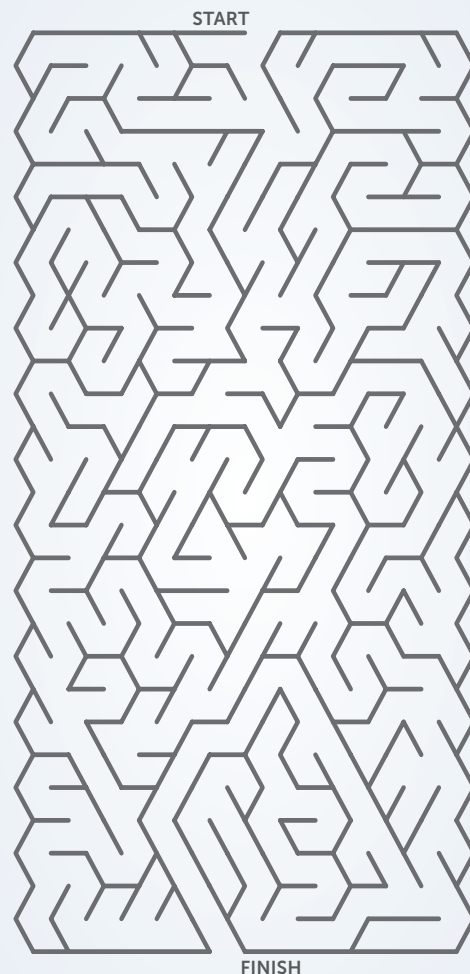
Question 3: What year did the first
Space Shuttle go into space?

Question 4: What is the main color
of the United Nations' flag?

Question 5: True or false: dogs can only
see in black and white.

Flip the page for last month's trivia answers:

Q1: What color is the 'M' in McDonalds? Yellow
Q2: True or false: Ronald Reagan was once an
actor. True
Q3: What does the Latin phrase "carpe diem"
translate to in English? Seize the day
Q4: What city was the Declaration of Independence
signed in? Philadelphia
Q5: How many legs do spiders have? Eight



Word Search

Z	R	H	U	C	U	X	B	Z	L	G	Y	F	A	S	U	R	G	D
H	A	M	O	C	B	S	B	A	P	W	N	C	H	R	O	F	A	B
J	J	K	W	M	Q	S	K	H	Y	V	A	S	B	L	C	Q	D	T
W	J	L	F	G	T	O	S	L	O	V	R	W	I	T	P	N	X	C
K	T	G	S	B	T	R	T	E	C	Y	O	A	A	J	L	J	F	T
C	W	Y	L	V	A	T	R	T	R	H	S	R	F	L	Z	B	K	B
D	N	Y	I	Q	Q	B	A	T	Q	V	I	S	C	L	C	Y	J	V
X	C	D	J	M	X	T	V	E	Y	A	I	L	N	Z	R	D	C	Z
A	H	I	Z	V	E	T	E	R	A	N	E	C	D	E	E	R	G	I
U	L	S	B	Z	O	P	L	S	Y	E	L	Q	E	H	R	Y	R	N
W	F	T	H	M	H	R	O	D	Z	Y	N	R	D	Y	O	N	Y	M
D	P	A	D	W	M	R	M	S	M	I	A	A	M	O	X	O	I	E
Y	E	N	X	M	D	Z	V	D	T	C	X	J	V	B	K	V	D	D
U	Y	C	K	M	O	E	G	F	C	C	J	O	D	Y	K	V	L	A
I	M	E	S	S	A	G	E	T	M	Z	A	U	B	E	E	P	U	L
V	A	C	K	Q	B	D	E	L	I	V	E	R	Y	Q	M	I	C	S
E	I	D	U	C	U	G	Z	R	I	T	V	N	D	M	R	R	B	E
K	L	U	P	S	D	S	D	A	W	L	R	E	P	U	P	I	H	U
H	Y	B	M	Y	L	T	T	D	K	Q	P	Y	Q	R	B	C	F	O

CAREER
CHILDHOOD
DELIVERY
DISTANCE

JOURNEY
LETTERS
MAIL
MEDALS

MESSAGE
NAVY
POSTCARD
SAILOR

SERVICE
TRAVEL
VETERAN
WAR