



RIVER TERRACE

HEALTH CAMPUS

A Trilogy Senior Living Community

# News

April 2021

## Happy Birthday!

### Residents

Joanna S.	4/01
George S.	4/07
Roy P.	4/09
Janet B.	4/14
Billie E.	4/17
Donald W.	4/30

## Upcoming Events

April 01- April Fools' Day

April 02- Good Friday

April 03- Happy Birthday, Ice Cream Sundae

April 04- Easter Sunday

April 06- Caramel Popcorn Day

April 13- Scrabble Day

April 20- Look-A-Like Day

April 22- Earth Day

April 28- Superhero Day

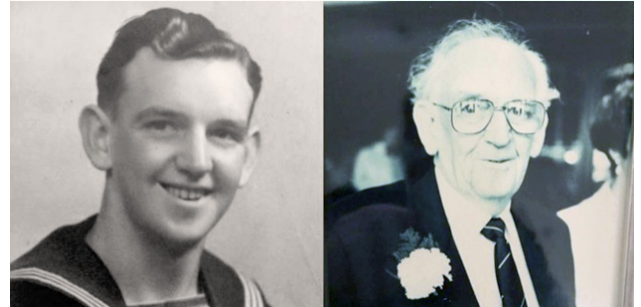
April 29- World Wish Day

## UK Family receives World War II-era Letter 77 Years After it was Sent

Everyone appreciates receiving letters from a loved one – even if they don't arrive exactly on time. When the family of Bill Baldwin, a now-passed World War II veteran, received a message from a distant relative, they were shocked to learn that they had received a unique letter specifically addressed to their childhood home. Written in Bill's handwriting, the letter was dated as having come from the year 1943.

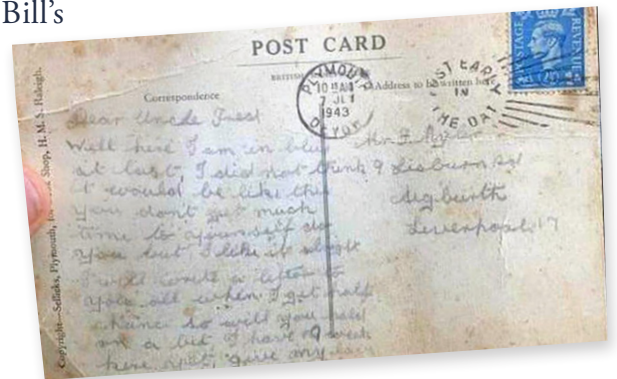
"It was the most surreal thing on a Friday night to suddenly read a postcard that dad had written 77 years ago when he was training to be a sailor in the Navy," said Bill's daughter, Joanna Creamer.

The Royal Mail admits that they don't know why the delivery took so long, but they speculate that the letter had been found and reposted. Having concluded his naval career with four medals from his time spent in Europe, the Pacific, Japan,



and Australia, Bill's words tell the story of a young man whose journey in the service was just beginning:

"Well I am in blue at last. I did not think it would be like this—you don't get much time for yourself, do you? But I like it alright. I will write a letter to you all when I get half a chance so will you hold on a bit? I have 19 weeks here yet. Give my love to everyone. Love, Bill."



Images provided by the family of Bill Caldwell. Original story from Good News Network.

Spring into  
Campus In Color  
Coming Soon!





# RIVER TERRACE

HEALTH CAMPUS

*A Trilogy Senior Living Community*

120 Presbyterian Ave.

Madison, IN 47250

812-265-0080

riverterrhc.com |

*Brittan Mefford*  
Executive Director

*Krissy Sample*  
Director of Health Services

*Nancy Bruno*  
Assistant Director of Health Services

*Dana Riddle*  
Customer Services Representative

*Matt Dean*  
Business Office Manager

*Kelli Snapp*  
Life Enrichment Director

*Kyle Sphire*  
Director of Social Services

*Michael Maloney*  
Director of Plant Operations

*Jessica Jackson*  
Director of Food Services

*Bethany Smith*  
Scheduler

*Evelyn Reynolds*  
Director of Environmental Services

*Tina Bell*  
Assisted Living Coordinator

## Stay in the Loop

Keep up with latest campus news and happenings by following us on your favorite social networks!

*We strive to provide the best customer service and quality care for our residents.*

*Our Department Leaders are here to solve any concerns you may have.*

*In the event that you need further assistance with any unresolved concerns, we encourage you to call or email our Compliance Hotline: 800-908-8618, ext. 2800; or [comply@trilogyhs.com](mailto:comply@trilogyhs.com)*

*Newsletter Production by [PorterOneDesign.com](http://PorterOneDesign.com)*

# Monthly Trivia & Activity Corner

*All trivia answers will be printed in our upcoming month's newsletter!*

**Question 1:** According to many historians, which animals were the first to be domesticated?

**Question 2:** What was the name of the U.S. president who served as commander-in-chief for only 31 days?

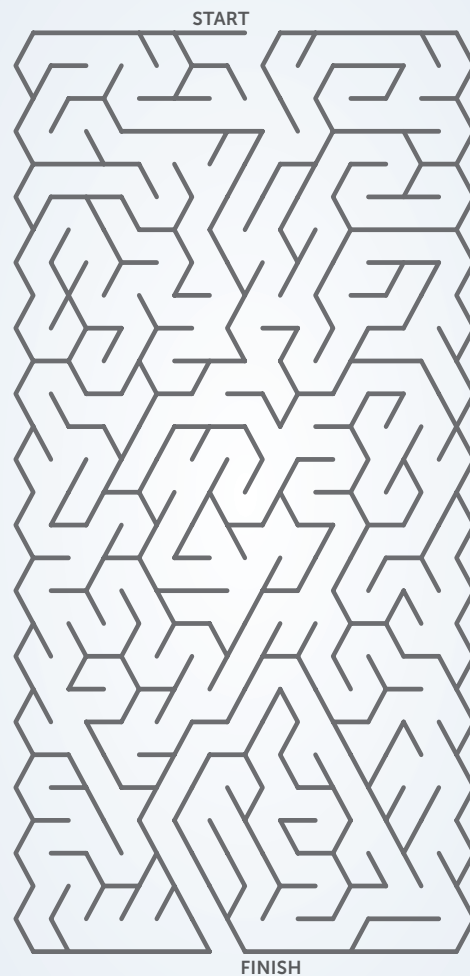
**Question 3:** What year did the first Space Shuttle go into space?

**Question 4:** What is the main color of the United Nations' flag?

**Question 5:** True or false: dogs can only see in black and white.

*Flip the page for last month's trivia answers:*

- Q5: How many legs do spiders have? Eight
- Q4: What city was the Declaration of Independence signed in? Philadelphia
- Q3: What does the Latin phrase "carpe diem" translate to in English? Seize the day
- Q2: True or false: Ronald Reagan was once an actor. True
- Q1: What color is the 'M' in McDonalds? Yellow



## Word Search

Z	R	H	U	C	U	X	B	Z	L	G	Y	F	A	S	U	R	G	D
H	A	M	O	C	B	S	B	A	P	W	N	C	H	R	O	F	A	B
J	J	K	W	M	Q	S	K	H	Y	V	A	S	B	L	C	Q	D	T
W	J	L	F	G	T	O	S	L	O	V	R	W	I	T	P	N	X	C
K	T	G	S	B	T	R	T	E	C	Y	O	A	A	J	L	J	F	T
C	W	Y	L	V	A	T	R	T	R	H	S	R	F	L	Z	B	K	B
D	N	Y	I	Q	Q	B	A	T	Q	V	I	S	C	L	C	Y	J	V
X	C	D	J	M	X	T	V	E	Y	A	I	L	N	Z	R	D	C	Z
A	H	I	Z	V	E	T	E	R	A	N	E	C	D	E	E	R	G	I
U	L	S	B	Z	O	P	L	S	Y	E	L	Q	E	H	R	Y	R	N
W	F	T	H	M	H	R	O	D	Z	Y	N	R	D	Y	O	N	Y	M
D	P	A	D	W	M	R	M	S	M	I	A	A	M	O	X	O	I	E
Y	E	N	X	M	D	Z	V	D	T	C	X	J	V	B	K	V	D	D
U	Y	C	K	M	O	E	G	F	C	C	J	O	D	Y	K	V	L	A
I	M	E	S	S	A	G	E	T	M	Z	A	U	B	E	E	P	U	L
V	A	C	K	Q	B	D	E	L	I	V	E	R	Y	Q	M	I	C	S
E	I	D	U	C	U	G	Z	R	I	T	V	N	D	M	R	R	B	E
K	L	U	P	S	D	S	D	A	W	L	R	E	P	U	P	I	H	U
H	Y	B	M	Y	L	T	T	D	K	Q	P	Y	Q	R	B	C	F	O

CAREER  
CHILDHOOD  
DELIVERY  
DISTANCE

JOURNEY  
LETTERS  
MAIL  
MEDALS

MESSAGE  
NAVY  
POSTCARD  
SAILOR

SERVICE  
TRAVEL  
VETERAN  
WAR