



ASHFORD PLACE

HEALTH CAMPUS

A Trilogy Senior Living Community

Chronicle

April 2021

Happy Birthday!

Residents

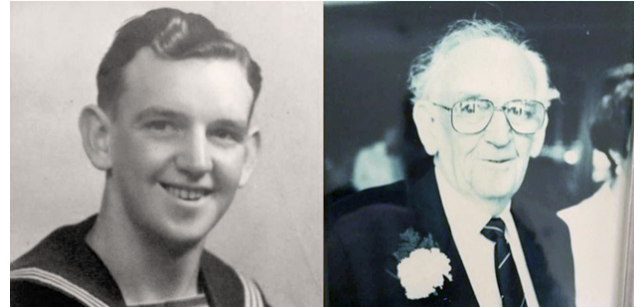
Patricia L.	4/01
Jeanetta G.	4/01
Ruth H.	4/02
Loretta M.	4/26

UK Family receives World War II-era Letter 77 Years After it was Sent

Everyone appreciates receiving letters from a loved one – even if they don't arrive exactly on time. When the family of Bill Baldwin, a now-passed World War II veteran, received a message from a distant relative, they were shocked to learn that they had received a unique letter specifically addressed to their childhood home. Written in Bill's handwriting, the letter was dated as having come from the year 1943.

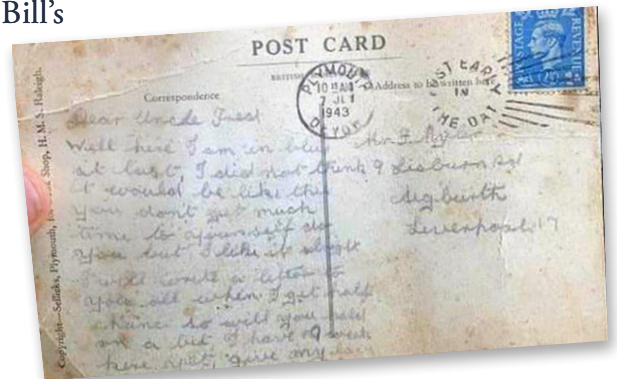
"It was the most surreal thing on a Friday night to suddenly read a postcard that dad had written 77 years ago when he was training to be a sailor in the Navy," said Bill's daughter, Joanna Creamer.

The Royal Mail admits that they don't know why the delivery took so long, but they speculate that the letter had been found and reposted. Having concluded his naval career with four medals from his time spent in Europe, the Pacific, Japan,



and Australia, Bill's words tell the story of a young man whose journey in the service was just beginning:

"Well I am in blue at last. I did not think it would be like this—you don't get much time for yourself, do you? But I like it alright. I will write a letter to you all when I get half a chance so will you hold on a bit? I have 19 weeks here yet. Give my love to everyone. Love, Bill."



Images provided by the family of Bill Caldwell. Original story from Good News Network.

Spring into
Campus In Color
Coming Soon!





ASHFORD PLACE

HEALTH CAMPUS

A Trilogy Senior Living Community

2200 N. Riley Highway

Shelbyville, IN 46176

317-398-8422

ashfordplacehc.com |

Zach Simpson
Executive Director

Erin Huntsman
Director of Health Services

Mary Ann Lux
Customer Service Representative

Olivia Fleck
Life Enrichment Director

Joseph Fuentes
Director of Plant Operations

Kimberly Belcher
Director of Food Services

Troy Allen
Director of Environmental Services

Natalie Padgett
Customer Service Specialist

Julie Tennell, BSW
Social Services Director

Stay in the Loop

Keep up with latest campus news and happenings by following us on your favorite social networks!

We strive to provide the best customer service and quality care for our residents.

Our Department Leaders are here to solve any concerns you may have.

In the event that you need further assistance with any unresolved concerns, we encourage you to call or email our Compliance Hotline: 800-908-8618, ext. 2800; or comply@trilogyhs.com

Newsletter Production by PorterOneDesign.com

Monthly Trivia & Activity Corner

All trivia answers will be printed in our upcoming month's newsletter!

Question 1: According to many historians, which animals were the first to be domesticated?

Question 2: What was the name of the U.S. president who served as commander-in-chief for only 31 days?

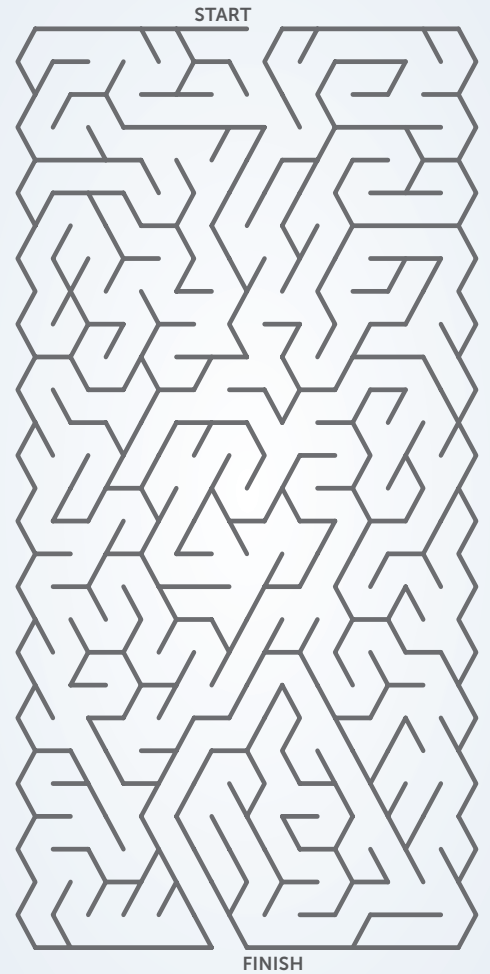
Question 3: What year did the first Space Shuttle go into space?

Question 4: What is the main color of the United Nations' flag?

Question 5: True or false: dogs can only see in black and white.

Flip the page for last month's trivia answers:

- Q1: What color is the 'M' in McDonalds? Yellow
- Q2: True or false: Ronald Reagan was once an actor. True
- Q3: What does the Latin phrase "carpe diem" translate to in English? Seize the day
- Q4: What city was the Declaration of Independence signed in? Philadelphia
- Q5: How many legs do spiders have? Eight



Word Search

Z	R	H	U	C	U	X	B	Z	L	G	Y	F	A	S	U	R	G	D
H	A	M	O	C	B	S	B	A	P	W	N	C	H	R	O	F	A	B
J	J	K	W	M	Q	S	K	H	Y	V	A	S	B	L	C	Q	D	T
W	J	L	F	G	T	O	S	L	O	V	R	W	I	T	P	N	X	C
K	T	G	S	B	T	R	T	E	C	Y	O	A	A	J	L	J	F	T
C	W	Y	L	V	A	T	R	T	R	H	S	R	F	L	Z	B	K	B
D	N	Y	I	Q	Q	B	A	T	Q	V	I	S	C	L	C	Y	J	V
X	C	D	J	M	X	T	V	E	Y	A	I	L	N	Z	R	D	C	Z
A	H	I	Z	V	E	T	E	R	A	N	E	C	D	E	E	R	G	I
U	L	S	B	Z	O	P	L	S	Y	E	L	Q	E	H	R	Y	R	N
W	F	T	H	M	H	R	O	D	Z	Y	N	R	D	Y	O	N	Y	M
D	P	A	D	W	M	R	M	S	M	I	A	A	M	O	X	O	I	E
Y	E	N	X	M	D	Z	V	D	T	C	X	J	V	B	K	V	D	D
U	Y	C	K	M	O	E	G	F	C	C	J	O	D	Y	K	V	L	A
I	M	E	S	S	A	G	E	T	M	Z	A	U	B	E	E	P	U	L
V	A	C	K	Q	B	D	E	L	I	V	E	R	Y	Q	M	I	C	S
E	I	D	U	C	U	G	Z	R	I	T	V	N	D	M	R	R	B	E
K	L	U	P	S	D	S	D	A	W	L	R	E	P	U	P	I	H	U
H	Y	B	M	Y	L	T	T	D	K	Q	P	Y	Q	R	B	C	F	O

CAREER
CHILDHOOD
DELIVERY
DISTANCE

JOURNEY
LETTERS
MAIL
MEDALS

MESSAGE
NAVY
POSTCARD
SAILOR

SERVICE
TRAVEL
VETERAN
WAR