



Upcoming Events

10/7/2020

Senior 101: Montessori Works
Demonstration at 2:00 p.m.

*Call us for the link to
join at: (505) 934-4774*

10/28/2020

Open House
Harvest Celebration
2:00 – 5:00 p.m.

10/30/2020

Nuclear Care Partners:
Day of Remembrance
8:00 a.m. – Noon

Location:

*Calvary Church Albuquerque
4001 Osuna Rd NE
Albuquerque, NM 87109*

A LETTER FROM THE ADMINISTRATOR

Excitement is growing as we get closer to completion of our beautiful new community. We expect to be ready for licensure in early November, and then it's move-in time! I am thrilled about the opportunity to continue building relationships with our current Founder's Club members and creating new relationships with future residents to include their families.

Our well-appointed rooms and amenity spaces will be ready for you to enjoy when you become a resident at Amaran Senior Living. We offer special features that you won't find in other local senior living communities, such as an entry sitting bench with storage built around for organization, full walk-in pantries, and washers/dryers included in the assisted living apartments. The storage spaces are plentiful, and the apartment finishes are exceptional. Come see why Amaran Senior Living is a step above the rest.

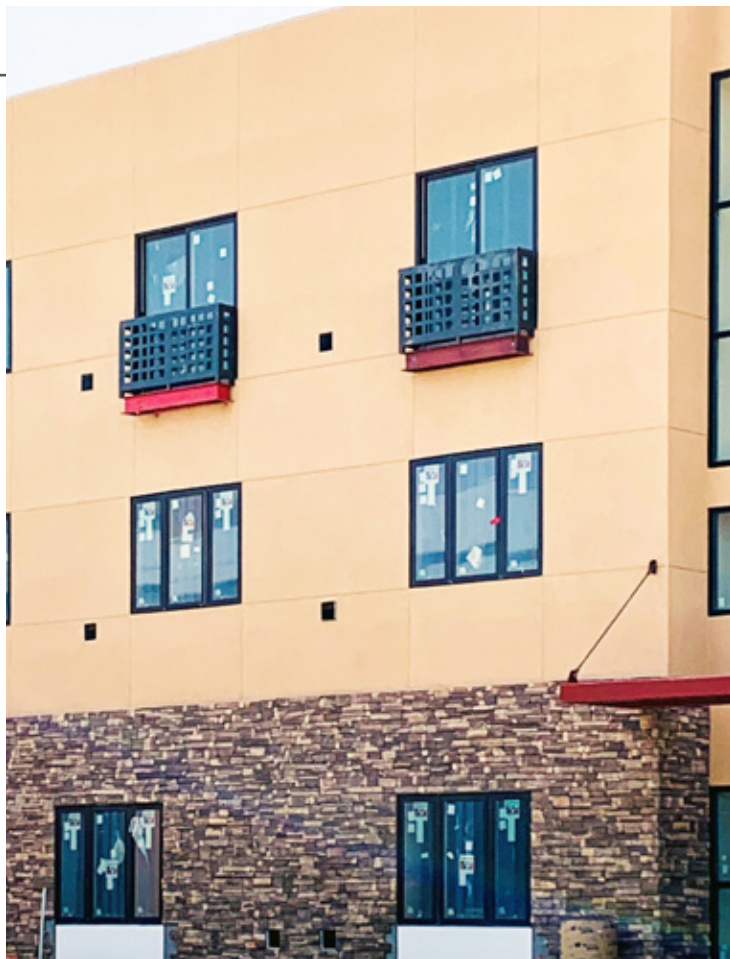
I want to assure everyone that we will be following CDC and state guidelines to minimize exposure to COVID-19. We have modern systems in place to help us keep our residents safe through the pandemic and move-in process. If you want to learn more, please call us today at 505-377-9962.

CONSTRUCTION UPDATE

Things are really moving forward at Amaran Senior Living. Drywall is complete, the entry portico stonework is finished, and the Juliet balconies are being primed and painted for installation. Completion is scheduled for November 1, 2020, and we will be ready to welcome our residents to their new home shortly after. We are incredibly excited to keep sharing the updates with you and scheduling tours as soon as we get the green light to do so.



Portico stonework is complete.



Juliet balconies are being installed.



LIGHT THE NIGHT MEMORIAL EVENT

We would like to extend our sincere gratitude to those who joined us for our Light the Night Memorial to recognize all of the loss in 2020 and share a message of hope for the future. A special "thank you" to Bob and Barbara Stewart from French Funerals and Cremations, Allen Taylor – Minister, and Gene Corbin for the beautiful guitar music. Here's to a brighter future!



We all need a positive message.



Thank you to Gene for the music!

LUXURIOUS AMENITY SPACES



Theatre with meal and beverage service available.



640 sq. ft. 1 Bedroom Apartment – Kitchenette with Walk-in Pantry.

Quality care is the foundation of our community, and our beautiful amenity spaces are the cherry on top. We are proud to show you what to expect at Amaran Senior Living. We feature thoughtfully appointed amenity spaces that convey luxury at a competitive price point.



Full-time Salon Services with Massage Therapy to pamper yourself.

Meet our Founders Club Member: Stan F.

Stan F. was born in Brooklyn, NY but moved to New Mexico after law school where he met his late wife, Rosalia. Stan worked for several federal agencies and spent the bulk of his career at the Government Accountability Office (GAO) as an attorney specializing in natural resources. Stan and Rosalia had two daughters in New Mexico before moving to Maryland for Stan's work in Washington, DC.

Stan and Rosalia returned to New Mexico in 1991 where Stan pursued his interests in book collecting, art deco and travel. Stan is an enthusiastic lifelong learner and enjoys attending classes and lectures. Stan has three grandchildren, two of whom live in Albuquerque. After nearly 50 years of marriage, Stan was widowed in 2009. He is looking forward to moving to Amaran and getting to know everyone.





AMARAN

ASSISTED LIVING • MEMORY CARE

9100 Holly Ave NE, Albuquerque, NM 87122

505-227-8366

AmaranSeniorLiving.com

Managed by **INSIGHT**
♦ SENIOR LIVING ♦

WORD SEARCH

Find and circle the 20 words listed below. The words are hidden diagonally, across, and up and down. All words are forward-reading. Good luck!

O	O	J	E	A	O	I	J	M	X	K	X	U	I	C	R	E	U	L	P	A	Q	K	U	Z
P	P	L	L	M	B	Z	L	E	L	I	A	O	P	E	X	Z	F	I	R	F	U	R	F	T
L	H	Q	I	E	Z	J	Y	M	D	Y	H	E	A	L	T	H	G	G	R	Z	M	E	D	N
E	A	S	Y	N	V	C	D	O	S	F	C	S	H	E	B	N	M	H	W	R	U	M	P	Y
N	R	E	Y	I	Q	T	Z	R	F	Z	W	E	Q	B	A	V	O	T	K	Y	Y	E	F	T
T	V	T	L	T	L	V	J	I	E	V	B	N	P	R	L	H	U	P	N	B	K	M	O	C
I	E	S	T	Y	B	O	N	A	S	Q	R	I	V	A	C	N	N	R	B	L	V	B	U	C
F	S	B	K	L	B	A	Q	L	T	T	W	O	E	T	O	U	T	C	O	Y	C	R	N	O
U	T	Z	W	E	E	J	P	R	I	P	J	R	T	I	N	C	A	Q	M	F	Q	A	D	M
L	V	X	W	U	A	S	E	D	V	P	Z	T	T	O	Y	U	I	O	M	O	K	N	E	M
U	P	Z	W	T	U	P	Y	Y	E	C	V	C	C	N	R	G	N	R	X	O	Z	C	R	U
X	J	U	M	P	T	O	B	S	B	X	U	V	G	H	L	Z	S	L	R	M	N	E	V	N
U	O	I	F	M	I	R	C	Y	T	R	K	V	M	S	O	B	Q	H	H	M	R	K	R	I
R	A	V	E	M	F	T	E	C	T	O	P	E	G	E	A	J	N	J	B	J	M	L	Z	T
I	X	F	A	F	U	I	H	S	L	V	R	E	L	A	T	I	O	N	S	H	I	P	N	Y
O	M	I	D	X	L	C	N	T	J	H	R	A	S	M	M	Y	L	L	E	H	A	K	L	A
U	P	J	H	C	I	O	F	C	I	Q	C	C	G	S	A	T	J	F	O	W	E	W	Y	E
S	F	K	X	Q	C	C	O	K	O	L	T	C	U	E	O	U	T	S	O	F	C	H	K	U

AMENITY
BALCONY
BEAUTIFUL
CELEBRATION
COMMUNITY

CONSTRUCTION
FESTIVE
FOUNDER
HARVEST
HEALTH

LIGHT
LUXURIOUS
MEMORIAL
MOUNTAINS
PLENTIFUL

PORTICO
RELATIONSHIP
REMEMBRANCE
SENIOR
STORAGE



World Mental Health Day is Oct. 11 –

Mental health is an important part of overall health and wellbeing. It affects how we think, feel, and act. It may also affect how we handle stress, relate to others, and make choices during an emergency. Mental and physical health are equally important components of overall health. It's important to remember that a person's mental health may change over time, depending on many factors. People with preexisting mental health conditions should continue with their treatment and be aware of new or worsening symptoms. *If you think this could be you, contact your physician today.*

Newsletter Production
by PorterOneDesign.com