

WILSHIRE ESTATES

Gracious Retirement Living

13716 New Hampshire Ave • Silver Spring, MD 20904 • Phone 240-257-3601 • www.seniorlivinginstyle.com

JUNE 2020

WILSHIRE ESTATES

Managers DEBRA SHONKA-BARTA &
RICH BARTA

Assistant Managers..... STEVE &
SHAROLETTE PENNINGTON

Executive Chef SETH CONNOLLY

Community Sales..... SUSAN MAAS

Sous Chef LARRY LITTLEFORD

Activity Coordinator..... LEORA RASKAS

Bus Driver ERIK ROBERTS

HAWTHORN
SENIOR LIVING

Message From Debra and Rich

Hello to June — we are celebrating and will welcome the kickoff to summer on June 20th and Father's Day on June 21st

At Wilshire Estates we have fully embraced the “Six feet apart – but close to the Heart” motto of Hawthorn Senior Living with all of our amazing residents and employees.

It's been a long spring but we are proud to report we have had a very safe and healthy community with the new normalcy in place. We owe a big shout-out and thank-you to all the wonderful employees who are here to help us through this challenging time.

It's been a long spring but we are proud to report we have had a very safe and healthy Community with the new normalcy in place. We owe a big shout-out and thank-you to all the wonderful employees who are here to help us through this challenging time.

Rich and I do look forward to meeting new potential residents via phone, with a virtual tour or when permitted to do so in person. In the meantime let's celebrate June with sun-filled, casual days and wishing a Happy Father's Day to all the men in everyone's life.

Debra and Rich
Community Managers

“My father gave me the greatest gift anyone could give another person: He believed in me.”

—JIM VALVANO

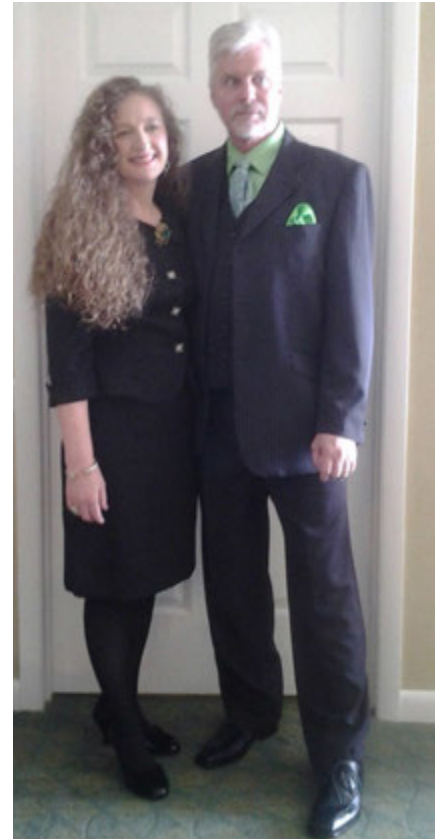




Meet Sharollette and Steve

After 20 years of working and adventure in the travel industry, Steve and Sharollette decided to sell their home in Gatlinburg, Tennessee, and walk the Appalachian Trail from Georgia to Maine, a 2,200-mile journey.

Because of the coronavirus, all national parks, walking trails and resupply routes shut down. With hiking no longer an option, they accepted a position as house sitters at a 400-acre farm with approximately 150 Black Angus cattle in northeast Georgia. While they enjoyed caring for the animals, they realized that their true calling was to work with people. After careful consideration, they selected Hawthorn Retirement Community as their next great adventure and were hired as Assistant Managers.



Having been at Wilshire Estates in Silver Spring, Maryland, only for a short time, Sharollette and Steve have already developed a deep appreciation for the community. Recognizing that the residents of Wilshire Estates have already been their age, but that they have yet to be the age of the residents, Sharollette and Steve anticipate that each day at Wilshire Estates will be a learning experience. They look forward to conversing with the residents and learning about their life experiences and learning from their expertise.

Reflecting on their experience so far, Sharollette and Steve radiate with positivity, noting that “it has been fun and exciting each day” as they “look forward to what every new day brings.”



June Birthday
Seth Connolly, 21st (Employee)





Spotlight on Gene Wiggins

Between his professorial demeanor and academic aptitude, it might surprise people to learn that Gene Wiggins almost didn't attend college. After high school he enlisted in the U.S. Air Force, and was later assigned an overseas tour in France. During the early months of his overseas tour, where he worked in the base finance office as a finance clerk, a lieutenant, the second officer in charge, took a special interest in Gene, providing him with intellectually stimulating books and mentoring. When they returned to the United States, Gene and his mentor parted ways. Gene returned to his hometown, Miami, Florida, and was quite satisfied with his life, which included working as an orderly in a local hospital and partying in his free time. Gene's mentor returned to accept a teaching position in economics at his alma mater, Ohio Wesleyan University (OWU) in Delaware, Ohio.

Though they led very different lives, Gene and his mentor continued to stay in touch. The mentor encouraged Gene to apply to OWU, offering to help him financially and provide him with housing in Delaware. Determined to continue enjoying Miami's nightlife, Gene wrote a made-up plan to delay college for another year and sent it to his mentor, hoping that the mentor would step away. But the mentor was determined and wrote back immediately. Gene was struck by his mentor's response, which he referred to as an "unbending directive. "The road to hell," his mentor wrote, "is paved with promising students who had great intentions of going to college after one year. I strongly recommend that you make plans to attend this college now; not a year from now. You have your GI Bill and I can get additional financial assistance for you."

"The lieutenant had made his mark," Gene recalls fondly. "I knew the man; and notwithstanding my stubborn responses to his persistent pledge to heighten my personal presence on this earth, I knew that he was right. I could not wrestle any longer with the fact that he not only made sense, but even more notably, his appeal was deeply rooted in his allegiance to — and reverence for — me. And I was not — as much as I may have appeared to be — an insolent young man floundering in the rough of life's edges, wholly deprived of the cognitive resources that would grant me the ability to acknowledge a sensible, good-hearted proposal from a man — a genuine friend — who was openly, and persistently, attentive to my personal well-being."

Gene went on to attend OWU. However, he transferred after one year to Hampton University in Virginia where, in 1963, he earned his Bachelor of Science degree in speech and language pathology (SLP), after which he began his career as a speech-language pathologist in the Beecher School District located north of Flint, Michigan. In 1966, he was appointed head of the Speech-Language Therapy Program in the Flint Public School District. And in 1969 earned his Master of Science degree in SLP at the University of Michigan. In 1971, Gene relocated to Washington, D.C., where he accepted a teaching position at the Federal City College — now the University of the District of Columbia (UDC). The following year he was appointed head of UDC's Speech and Hearing Clinic, a position he would hold for 36 years, during which he received numerous federal grant awards, and he was also a grant reviewer.

In 1978, he co-founded the National Black Association for Speech-Language and Hearing (NBASLH), and served voluntarily as its executive director from 1988 to 2002. Recognizing Gene's impressive accomplishments, UDC presented him the Paul Phillips Cooke Lifetime Achievement Award; he has also been designated as a Fellow of the American Speech-Language-Hearing Association (ASHA). And in 2012, NBASLH's Board of Directors created the M. Eugene Wiggins Leadership Award, which is awarded annually to a member of the association who has demonstrated outstanding leadership qualities in the communication sciences and disorders professions.

After years of success, and attributing his academic and career successes to his "mentor's persistent encouragement." Gene "passed it forward" to the next generation, receiving almost \$5 million in grant awards to provide financial support to students who were enrolled in the SLP undergraduate and graduate programs at UDC.



Brain Bender: What a Catch!

Four buddies—Calvin, Gary, Nate and Stan—went fishing. They each caught a different kind of fish: bass, walleye, perch and trout. From the clues below, can you determine the first and last names of each fisherman, what kind of fish he caught, and how much the fish weighed (3, 6, 8 or 10 pounds)?

1. Stan’s last name isn’t Hall.
2. Calvin, whose last name isn’t Reynolds, didn’t catch the smallest fish.
3. The man who caught the 8-pound fish didn’t catch the walleye.
4. Mr. White didn’t catch the 6-pound trout.
5. Nate caught the perch.
6. The fish were caught in the following order, from smallest to largest: Mr. Hall, Gary Benson, bass, and Calvin.

Virtual Visits

You can get a free ticket to visit world-famous museums and attractions and use it without leaving the comfort of your chair. A wide range of virtual tours and online exhibits are available at your fingertips. Here are just a few you can explore.

- The Louvre, Paris
Louvre.fr/en/visites-en-ligne
- National Gallery of Art, Washington, D.C.
NGA.gov
- Smithsonian National Museum of Natural History, Washington, D.C.
NaturalHistory.SI.edu
- San Diego Zoo, San Diego.
Zoo.SanDiegoZoo.org
- Monterey Bay Aquarium, Monterey, Calif.
MontereyBayAquarium.org/animals/live-cams

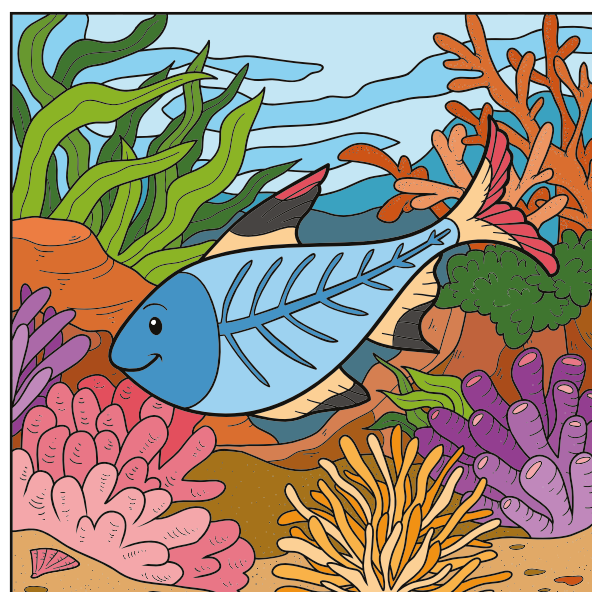
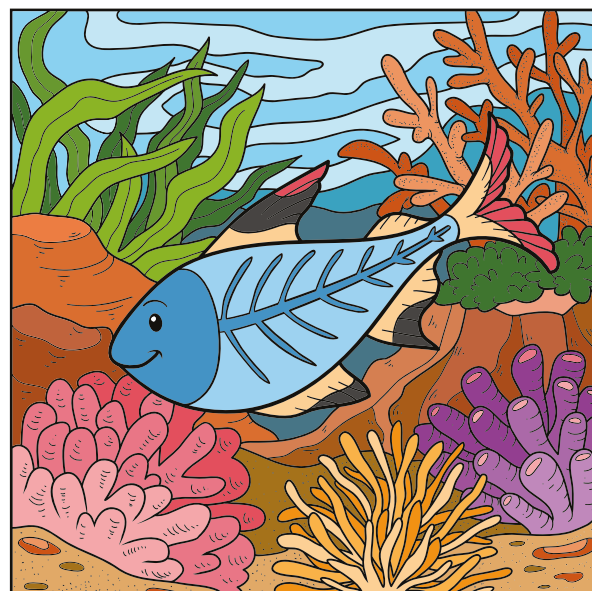
Summertime Snicker

Q: What holds the sun up in the sky?

A: Sunbeams!

Double Take

Fish around and find 10 differences in these two pictures.



Sudoku

The object of the game is to fill all the black squares with the correct numbers. Each row, column and 3x3 subsection must include all digits 1 through 9 in any order.

	2		1					5
	6	7	2				1	
				5	9			7
		2			1			
3	1			2			7	4
			9			3		
6			4	9				
	4				2	1	8	
2					7		3	

TV Dads

Match the father figure character to the TV show he appeared in.

Fictional Father

1. Tim Taylor
2. James Evans Sr.
3. Tom Corbett
4. Steve Douglas
5. Carl Winslow
6. Howard Cunningham
7. Jim Anderson

TV Show

- A. “Father Knows Best”
- B. “Home Improvement”
- C. “Good Times”
- D. “Family Matters”
- E. “My Three Sons”
- F. “Happy Days”
- G. “The Courtship of Eddie’s Father”

Word Ladders

In each set below, use the clues to change the first word, one letter at a time, to get the last word.

DAD

- ___ Took action
- ___ A cube with dots

TIE

GOLF

- ___ Wide chasm
- ___ Sea-loving bird
- ___ Bovine patriarch

BALL

FISH

- ___ A tightly closed hand
- ___ Tiny water droplets
- ___ Chewing gum flavor
- ___ Two cups
- ___ Sewing accessories

FINS

Puzzle Solutions

Brain Bender: What a Catch!

Nate Hall caught the 3-pound perch. Gary Benson caught the 6-pound trout. Stan Reynolds caught the 8-pound bass. Calvin White caught the 10-pound walleye.

TV Dads

1. B; 2. C; 3. G; 4. E; 5. D; 6. F; 7. A

Word Ladders

1. dad, did, die, tie; 2. golf, gulf, gull, bull, ball; 3. fish, fist, mist, mint, pint, pins, fins

9	3	4	7	1	5	8	6	2
6	8	1	2	9	3	5	7	4
2	5	7	8	6	4	1	3	9
1	2	3	5	4	6	9	7	8
4	7	5	9	2	8	6	1	3
8	6	9	1	3	7	2	5	4
7	4	2	6	5	9	3	8	1
3	1	6	4	8	2	7	9	5
5	9	8	3	7	1	4	2	6





Six Feet Apart, but Close to the 





Blast From the Past: Cole Porter

Born in Indiana on June 9, 1891, Cole Albert Porter studied piano from a young age, publishing his first song when he was only 11. By the time he had finished his undergraduate degree at Yale, he had written "Bulldog" and "Bingo Eli Yale," which are still played at Yale today. To satisfy the wishes of his grandfather, wealthy businessman James Omar Cole, Porter briefly studied at Harvard Law School, and then unbeknownst to his grandfather, transferred to Harvard's music department. In 1917, Porter moved to



France, where he is said to have joined the French Foreign Legion. It was in France that he met his future wife, Linda Lee Thomas. They were married in 1919. Though Porter's early songs were not very well received, he finally got his break in 1928, with his song, "Let's Do It" in the Broadway musical "Paris." In the decade that followed, Porter met more success, composing the hit songs such as "Night and Day," "I Get a Kick Out of You," "You're the Top," "Begin the Beguine" and "I've Got You Under My Skin." However in 1937, Porter was involved in a horseback riding accident and suffered for years as a result of his injuries. In the years that followed, Porter continued to produce a number of works, but once again, his songs were met with mixed reception. His most well known post-injury compositions, and perhaps his most well known songs of all time, were composed for the Tony Award winning musical "Kiss Me, Kate" (1948). Memorable numbers include "Tom, Dick or Harry," "Too Darn Hot" and "Always True to You (in My Fashion)." Faced with further complications from his earlier horseback riding injury, Porter's right leg was amputated in 1958, the same year he produced his late major musical hit. He died in 1964 at the age of 73.

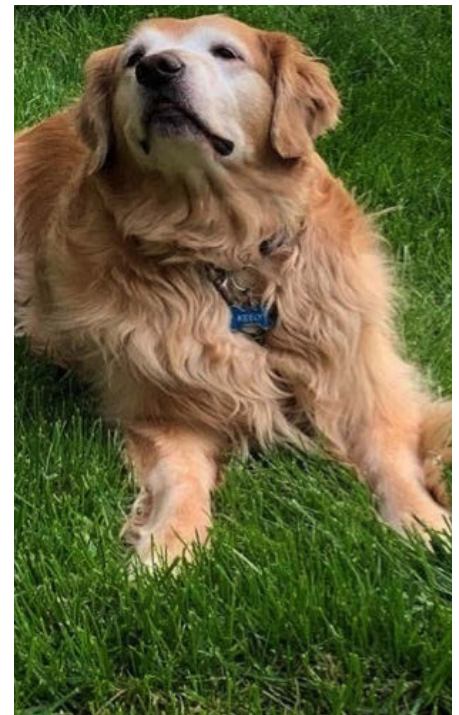
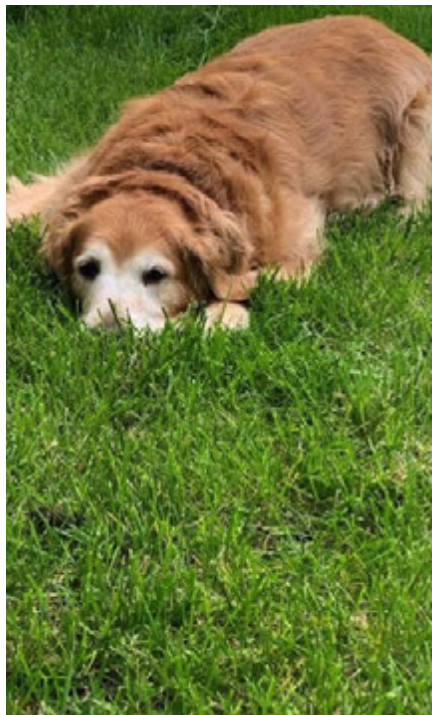
In honor of the anniversary of Cole Porter's birth, Wilshire Estates is excited to host "The Best of Cole Porter: A Singalong" on Tuesday, June 9th at 11:30 a.m., in the Activities Room.

Keely's Korner

I love Wilshire Estates as my home.

I can kick back and smell the sweet grass
of summer.

Enjoy!



WILSHIRE ESTATES
Gracious Retirement Living

13716 New Hampshire Ave
Silver Spring, MD 20904



When the world
is staying apart,
we are coming
together.

WILSHIRE ESTATES
Gracious Retirement Living

240-257-3601

