

# Colonial Gardens

## Gracious Retirement Living

105 Cherry Hill Drive • Beverly, MA 01915 • Phone (978) 922-1203 • [www.seniorlivinginstyle.com](http://www.seniorlivinginstyle.com)

### JUNE 2020

#### COLONIAL GARDENS STAFF

Managers.....SAM & CARRIE MARTIN  
Assistant Managers ..... JEREMY & TAMMY RODRIGUEZ  
Assistant Managers .....PAUL & BRENDA SCOTT  
Executive Chef..... NATHANAEL HUBISZ  
Activity Coordinator ..... CHRISTA LEGER  
Maintenance .....CESAR VIEIRA & CARMELLA MOISE  
Transportation . JIM GARNHAM & LEONARD CAMPANELLO

#### OFFICE HOURS

Daily: 7:30 a.m.-7:30 p.m.

#### TRANSPORTATION

**Monday-Friday, 9 a.m.-3 p.m.:** Appointments

**Tuesday & Thursday, 9 a.m.-3 p.m.:** Shopping Shuttle

**Wednesday, See Sign-up Sheet:** Activity Outings

**Saturday, 8:30 a.m.:** Synagogue  
— Temple B'Nai Abraham

**Sunday, 8:40 a.m.:** St. Richard's

**Sunday, 9:10 a.m.:** 2nd Congregational

**Sunday, 9:40 a.m.:** St. Mary's

**HAWTHORN**  
SENIOR LIVING

### Colonial Gardens Loves Our Residents

Days have become long, stressful and boring. As the world recovers from the virus and we shelter in place, it is important not to forget how much love there is in this Community. Residents don't see

much of each other or staff for the time being. Colonial Gardens wanted to let the residents know that we haven't stopped loving them or thinking about them. Not seeing each other much is what is keeping the virus outside, though it is difficult. Tammy cut out 150 rainbow hearts on the Cricut machine and Christa hand-signed each one saying "We love you!" The hearts were then placed in the center of each individual pizza box. Pizza was the Friday night supper and the secret ingredient was love.

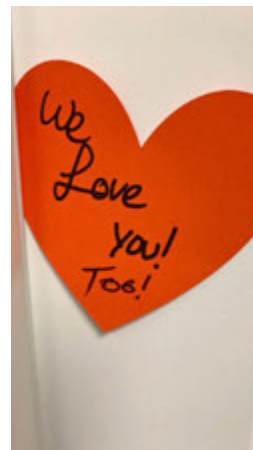
A few days later on Sunday afternoon came the Ice Cream Cart. As cones and Popsicles were handed out by the handful, a few apartment doors sported a splash of color. Some residents had taken their hearts from the pizza boxes and written "too" under its original phrase. Together the residents showed their love back to the staff stating, "We love you, too."



*Special ingredient in pizza ... love*



*Christa writing  
"We love you!"*







## Heroes Work Here

As the saying goes, not all heroes wear capes. Heroes wear camouflage, firefighter gear, police uniforms, scrubs, pizza sauce stained aprons and so much more. Heroes include the housekeepers, servers, kitchen staff, activities staff and managers in all the Hawthorn Senior Living Communities. Hawthorn wanted to draw attention to our heroes and thank them with a huge lawn sign that says "Heroes Work Here." The letters were laid on the floor of the Dining Room in the correct order then put on a small metal post. They were gathered in order and brought to the side of Conant Street. There Christa and server Sara laid them out evenly spaced before sticking them in the ground. The letters were put at a slight angle so they could be seen coming up the road from Danvers. As the girls did this they heard a dozen or so honks with people waving as a thank-you for what we all do.

As family members of the residents who live here drop off supplies they thank us each and every time for doing everything in our power to keep their loved ones safe. That means a lot to us and we all appreciate the kindness. We signed on to care for their loved ones and that is exactly what we are going to do.



*Server Sara helping with the sign*



*Coming down Conant Street*





## Six Feet Apart Saves Lives

During these trying times there is a lot to remember. We must remember to wash our hands more frequently or sanitize them. Remember your mask in the hallways or outside making sure it covers your mouth and nose. And of course keeping a physical distance of 6 feet between each other. Instead of staff always nagging about keeping the correct distance apart, Assistant Manager Tammy showed an accurate depiction of 6 feet in the main elevator. Also always remember to wash your hands for 20 seconds. If you don't know how long 20 seconds is, sing a tune while you scrub. For music ideas see May's newsletter or see Christa so she can print you out a list.

### **SOCIAL DISTANCING**



1. KEEP ONE LLAMA OF SPACE BETWEEN YOU AND OTHERS

*A funny way to look at it!*



*Main elevator*

## Freshly Squeezed Lemonade



*Handmade decorations*



*Angie picking her flavor*



*Shirley and Peter enjoying mango lemonade*

# Brain Bender: What a Catch!

Four buddies—Calvin, Gary, Nate and Stan—went fishing. They each caught a different kind of fish: bass, walleye, perch and trout. From the clues below, can you determine the first and last names of each fisherman, what kind of fish he caught, and how much the fish weighed (3, 6, 8 or 10 pounds)?

1. Stan’s last name isn’t Hall.
2. Calvin, whose last name isn’t Reynolds, didn’t catch the smallest fish.
3. The man who caught the 8-pound fish didn’t catch the walleye.
4. Mr. White didn’t catch the 6-pound trout.
5. Nate caught the perch.
6. The fish were caught in the following order, from smallest to largest: Mr. Hall, Gary Benson, bass, and Calvin.

# Virtual Visits

You can get a free ticket to visit world-famous museums and attractions and use it without leaving the comfort of your chair. A wide range of virtual tours and online exhibits are available at your fingertips. Here are just a few you can explore.

- The Louvre, Paris  
[Louvre.fr/en/visites-en-ligne](http://Louvre.fr/en/visites-en-ligne)
- National Gallery of Art, Washington, D.C.  
[NGA.gov](http://NGA.gov)
- Smithsonian National Museum of Natural History, Washington, D.C.  
[NaturalHistory.SI.edu](http://NaturalHistory.SI.edu)
- San Diego Zoo, San Diego.  
[Zoo.SanDiegoZoo.org](http://Zoo.SanDiegoZoo.org)
- Monterey Bay Aquarium, Monterey, Calif.  
[MontereyBayAquarium.org/animals/live-cams](http://MontereyBayAquarium.org/animals/live-cams)

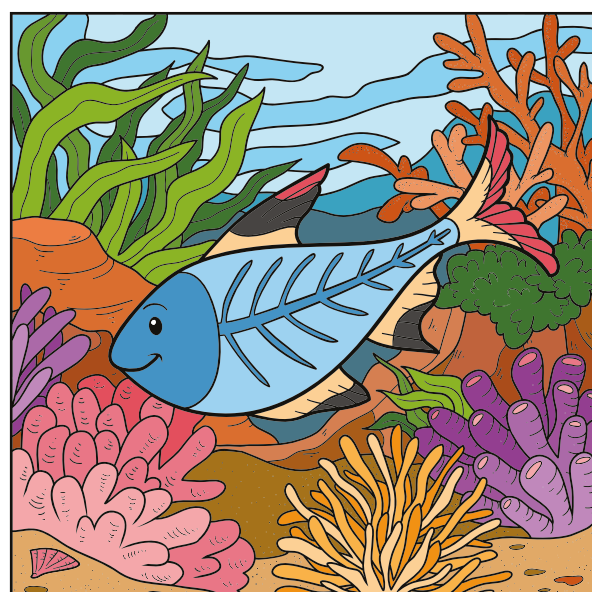
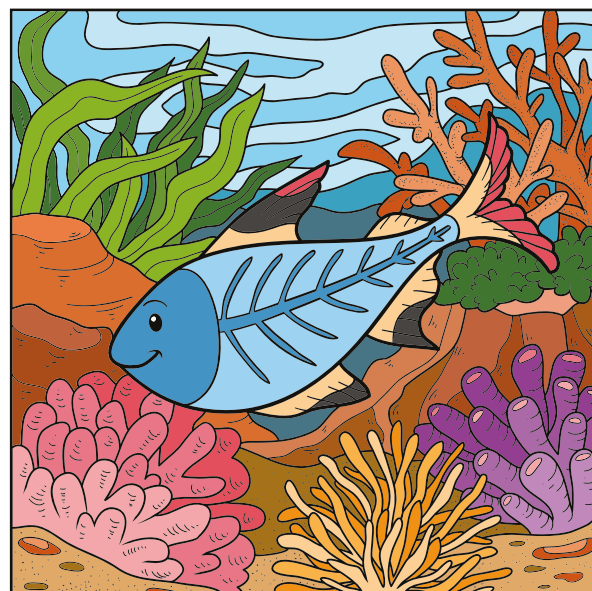
# Summertime Snicker

**Q:** What holds the sun up in the sky?

**A:** Sunbeams!

# Double Take

Fish around and find 10 differences in these two pictures.



# Sudoku

The object of the game is to fill all the black squares with the correct numbers. Each row, column and 3x3 subsection must include all digits 1 through 9 in any order.

	2		1					5
	6	7	2				1	
				5	9			7
		2			1			
3	1			2			7	4
			9			3		
6			4	9				
	4				2	1	8	
2					7		3	

# TV Dads

Match the father figure character to the TV show he appeared in.

## Fictional Father

1. Tim Taylor
2. James Evans Sr.
3. Tom Corbett
4. Steve Douglas
5. Carl Winslow
6. Howard Cunningham
7. Jim Anderson

## TV Show

- A. “Father Knows Best”
- B. “Home Improvement”
- C. “Good Times”
- D. “Family Matters”
- E. “My Three Sons”
- F. “Happy Days”
- G. “The Courtship of Eddie’s Father”

# Puzzle Solutions

## Brain Bender: What a Catch!

Nate Hall caught the 3-pound perch. Gary Benson caught the 6-pound trout. Stan Reynolds caught the 8-pound bass. Calvin White caught the 10-pound walleye.

## TV Dads

1. B; 2. C; 3. G; 4. E; 5. D; 6. F; 7. A

## Word Ladders

1. dad, did, die, tie; 2. golf, gulf, gull, bull, ball; 3. fish, fist, mist, mint, pint, pins, fins

# Word Ladders

In each set below, use the clues to change the first word, one letter at a time, to get the last word.

## DAD

\_\_\_ Took action

\_\_\_ A cube with dots

## TIE

## GOLF

\_\_\_ Wide chasm

\_\_\_ Sea-loving bird

\_\_\_ Bovine patriarch

## BALL

## FISH

\_\_\_ A tightly closed hand

\_\_\_ Tiny water droplets

\_\_\_ Chewing gum flavor

\_\_\_ Two cups

\_\_\_ Sewing accessories

## FINS

9	3	4	7	1	5	8	6	2
6	8	1	2	9	3	5	7	4
2	5	7	8	6	4	1	3	9
1	2	3	5	4	6	9	7	8
4	7	5	9	2	8	6	1	3
8	6	9	1	3	7	2	5	4
7	4	2	6	5	9	3	8	1
3	1	6	4	8	2	7	9	5
5	9	8	3	7	1	4	2	6







## Hawthorn Loving Heart Program

All the Activity Coordinators in Hawthorn Senior Living were asked to participate in a challenge, later called the Hawthorn Loving Heart Program. Many places including windows of homes, businesses, hospitals, nursing homes, assisted living and retirement communities have been putting up hearts to represent hope to all essential workers and their neighborhoods. The challenge was created to kick-start the message of love, appreciation and community. Our Dining Room windows have a little girl wishing on a dandelion and hearts come off the flower. Those wishes in the shape of hearts then float down into hands cupped together, embracing the love. Another window has giant hearts raining from the sky. This challenge was a lot of fun and brought life into the Dining Room.



## June Birthdays

**Ginny Healy:** June 6th  
**Ethel Cotter:** June 9th  
**Tami Goodhue:** June 10th  
**Richard Geraghty:** June 11th  
**Peter Goodwin:** June 14th  
**Helen Smith:** June 14th  
**Josephine Crescenzi:** June 21st

If your birthday or anniversary is not in the newsletter, but you would like it to be, please see Christa about getting your special day on paper! If you are in the newsletter and would not like to be, again, please see Christa so we can take that information off paper.



*To everyone born in June*



## Coming Soon!

### **Friday, June 5th, National Donut**

**Day:** Look for a Coffee and Donut Cart rolling your way.

### **Wednesday, June 10th, National**

**Black Cow Day:** Enjoy some sweet and cool black cow drinks.

### **Friday, June 12th, Fire and Ice Prom:**

Show us your best dress for this year's prom from 6 to 8 p.m. in the Dining Room with entertainment from Joey B-Bop!

### **Tuesday, June 16th, Got Milk?:**

Sample some different kinds of milk and different-flavored milk.

### **Sunday, June 21st, Father's Day Reptile Zoo: 3-4 p.m.**

### **Thursday, June 25th, National Bomb Pop Day:** Get ready to relax with a refreshing Bomb Pop.

**Tuesday, June 30th, "Willy Wonka & the Chocolate Factory" Anniversary:** Get your noses ready for the sweet smell of delicious chocolate and candy.

\*\*\* All activities are subject to change. For activities to do in your room, please see Christa. \*\*\*



*Black cow*

## Smiles From Outside

No one makes us smile as much as kids. During this time we need as many smiles as possible.

Donna Gray's grandkids made and signed an armful of cards to be handed out around the Community. The cards were dropped off at the front door then sanitized to protect the residents. The kids were very excited that actual live people were going to receive their cards and read them. We thank the Gray family for their wonderful generosity and cards. Little things like that are always valuable, but more priceless in these dark times.



*Donated cards*

Also a special thank-you to Rome Chesney's sister, who donated 50 handmade masks to the Community! And a second special thank-you to Jim and Maureen Griffin's family for another arms-filled pile of handmade masks! We appreciate you so much!



Colonial Gardens  
Gracious Retirement Living

105 Cherry Hill Drive  
Beverly, MA 01915



When the world  
is staying apart,  
we are coming  
together.

Colonial Gardens  
Gracious Retirement Living

**978-922-1203**

