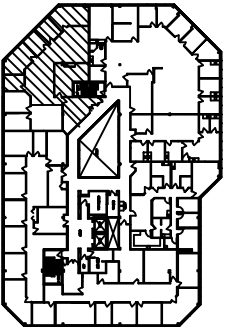
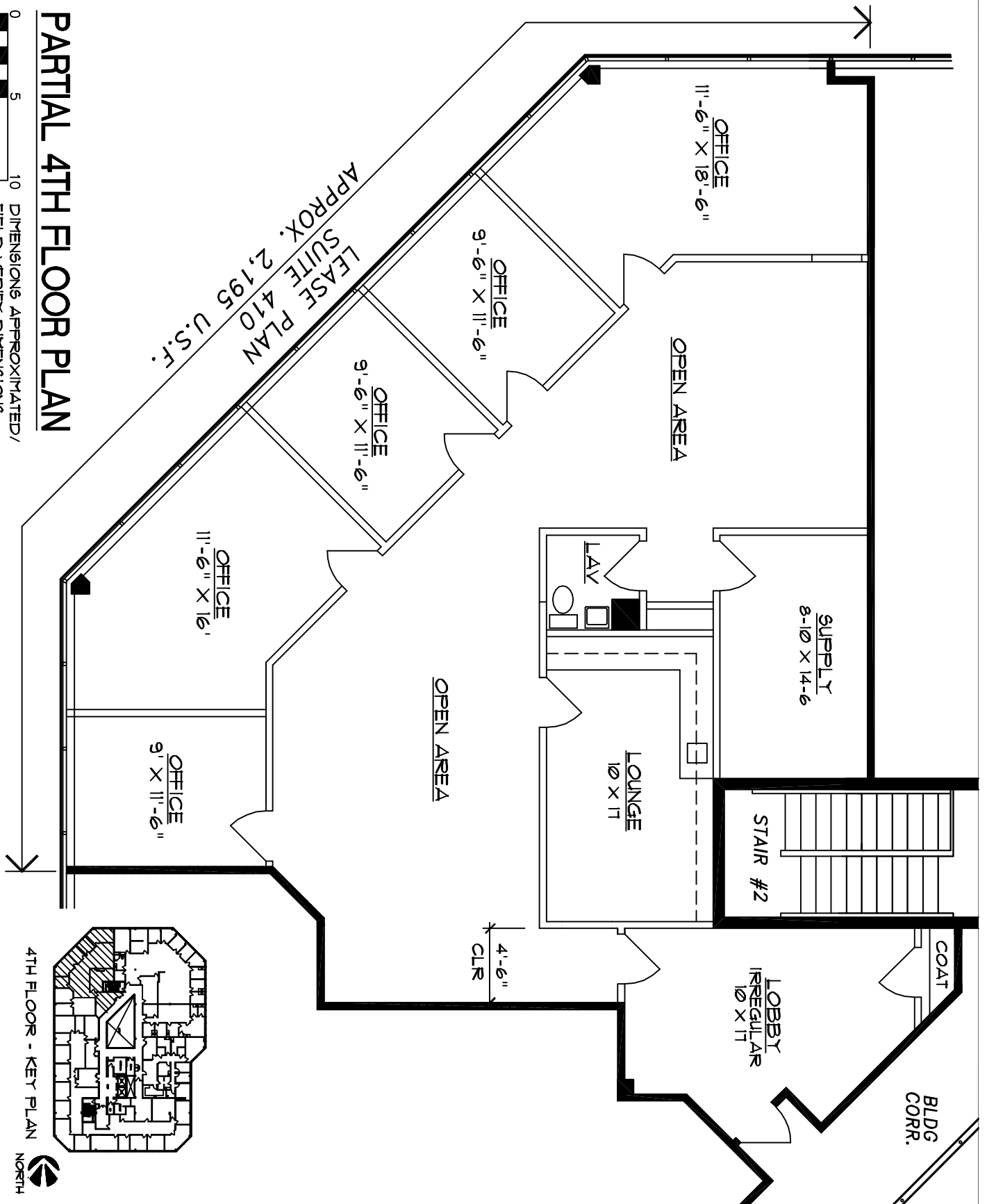


0 5 10 DIMENSIONS APPROXIMATED/
FIELD VERIFY DIMENSIONS

PARTIAL 4TH FLOOR PLAN

LEASE PLAN
SUITE 410
APPROX. 2,195 U.S.F.



4TH FLOOR - KEY PLAN



PAZZI INCORPORATED
395 EAST MAPLE
BIRMINGHAM, MICHIGAN 48009
(248) 642-6535
(248) 642-3915 fax

building
300 PARK OFFICE BUILDING
300 PARK ST.
BIRMINGHAM, MI

date: **12-12-11**
sheet
LEASE PLAN
project no.
01-28-06-116
sheet no.
LP-410

project
LEASE PLAN - SUITE 410

