



PACIFICA
SENIOR LIVING

FULL-SERVICE RETIREMENT LIVING

It's a New Day.

And It's Yours!

The background of the entire page is a light gray, stylized leaf pattern. The leaves are elongated and pointed, with some having small circles at their bases, resembling acorns or similar foliage. They are arranged in a repeating, overlapping manner across the entire surface.

Our Mission

Privately owned, Pacifica Senior Living strives to create a lifestyle of independence and peace of mind for each individual and their family. We do what we love and what we truly believe in – providing compassionate, personalized care services with dignity and respect. Our dedicated, professional team supports each resident and goes above and beyond to help them feel at home.



It's a New Day.

At Pacifica Senior Living, we don't expect our residents to "fit" into one of our communities. We've designed our communities to "fit" them – to meet their different needs, preferences, dreams and goals. From independent living to assisted living and memory care, our communities welcome residents to live by their own design.

Our communities provide residents with every service and amenity they need, want and *deserve* to live each day just as they choose. We respect their individuality and understand that each person is in charge of the direction his or her life takes. We're simply here to support them. Every step of the journey.

And It's Yours!

Senior *Living* Services

Pacifica Senior Living communities offer a variety of care and lifestyle choices to support our residents in living well.

Independent Living

Active seniors retire to carefree living at its best. No housework. No yardwork. *No worries.* Just time to spend as they choose. Our communities feature spacious apartment homes, amenities, services and engaging programs – all designed to provide residents with the lifestyle to which they've aspired.

Heartland™ Assisted Living

Delivering the optimal balance of independence and support, Heartland™ Assisted Living helps our residents live fulfilling, dignified lives. Each resident has a customized service plan that meets his or her individual needs. With support available 24 hours a day, our residents enjoy assistance with activities such as:

- Meals
- Medication Management
- Bathing & Dressing
- Mobility
- Transportation



Welcome

Welcome to Pacifica Senior Living Calaroga Terrace, an elegantly appointed senior living community that elevates independent living, assisted living to a new standard of excellence.

Offering affordable fees for our Independent Living, Heartland™ Assisted Living, Pacifica Calaroga Terrace just may be the best value in luxury senior living in the Portland Area. Rich with amenities and services, Pacifica Calaroga Terrace welcomes residents to enjoy a worry-free lifestyle that beautifully balances independence and support.

Our community is rich in history and updated to provide seniors with an enriching, fulfilling lifestyle, the company of peers and the peace of mind of 24-hour support by a trained staff.

Conveniently located, Pacifica Calaroga Terrace is close to shopping, healthcare services, religious services, cultural and educational opportunities, and of course, in the heart of the historic downtown Lloyd District.

At Pacifica Senior Living Calaroga Terrace, it's a new day. And it's yours! Make the most of it. Right here.





From Vancouver, Washington / North:

- Take 1-5 South toward Portland, Oregon
- Take EXIT 302A toward Moda Center/City Center
- Merge onto N Vancouver Avenue
- Take the 1st left onto N Weidler Street
- Turn right onto NE 2nd Avenue

Pacifica Senior Living Calaroga Terrace will be on your left

From Salem, Oregon / South:

- Take 1-5 North toward Portland, Oregon
- Take the Broadway - Weidler St exit, EXIT 302A, toward Moda Center
- Merge onto NE Weidler Street
- Take the 1st right onto NE 2nd Avenue

Pacifica Senior Living Calaroga Terrace will be on your left

From the Columbia George / East:

- Take I-84 West toward Portland, Oregon
- Merge onto I-5 N/US-30 W/Pacific Highway 1 N toward Seattle
- Take the Broadway - Weidler Street exit, EXIT 302A, toward Moda Center
- Merge onto NE Weidler Street
- Take the 1st right onto NE 2nd Avenue

Pacifica Senior Living Calaroga Terrace will be on your left

From the Oregon Coast / West:

- Take US-26 East toward Portland, Oregon
- Merge onto I-405 S toward Salem
- Merge onto I-5 N/Pacific Highway 1 N toward The Dalles/I-84 E/Seattle
- Take the Broadway - Weidler St exit, EXIT 302A, toward Moda Center
- Merge onto NE Weidler Street
- Take the 1st right onto NE 2nd Avenue

Pacifica Senior Living Calaroga Terrace will be on your left

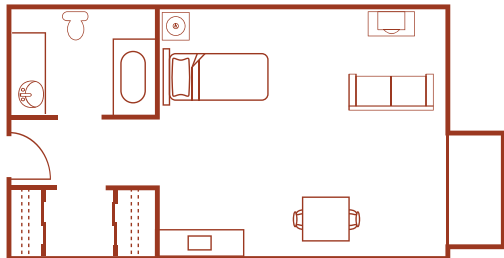


License #1968715845

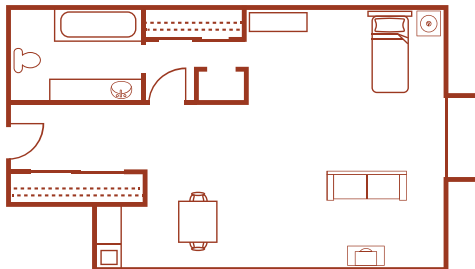


Independent Living Floor Plans

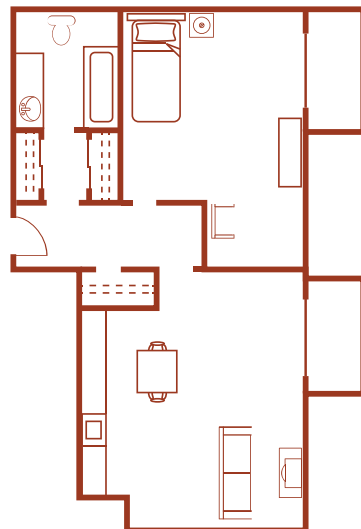
Silver Creek



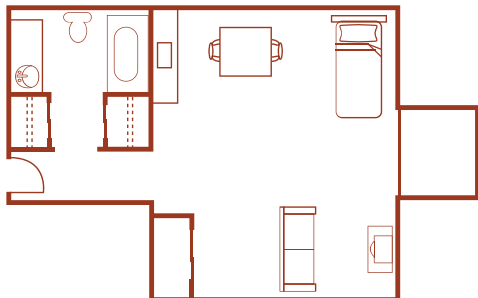
Calapooia



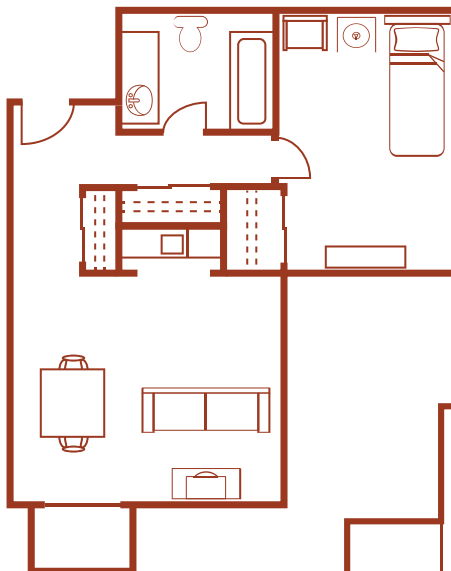
Clackamas



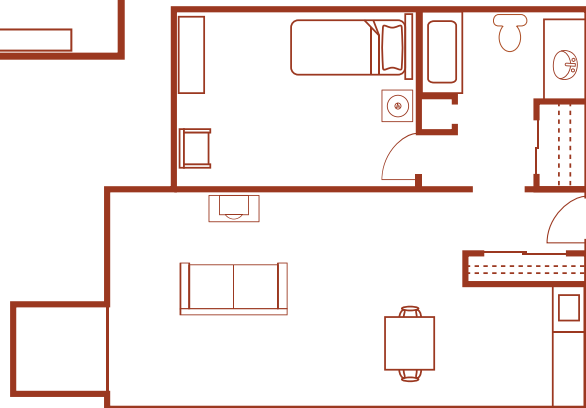
Santiam



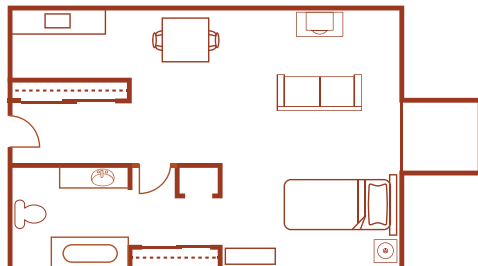
Tualatin



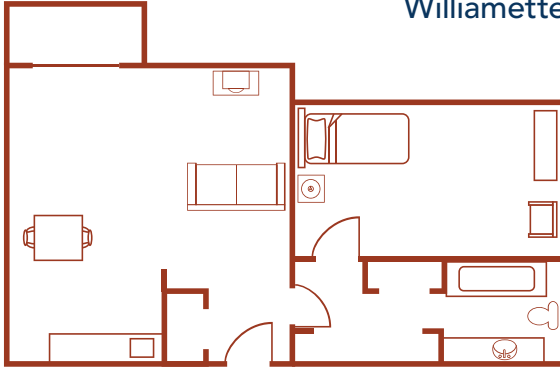
Columbia



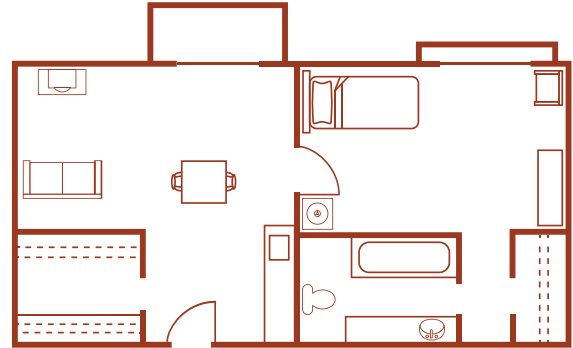
Yamhill



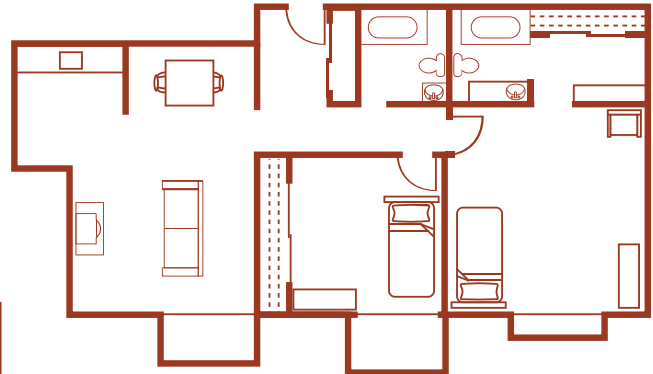
Williamette



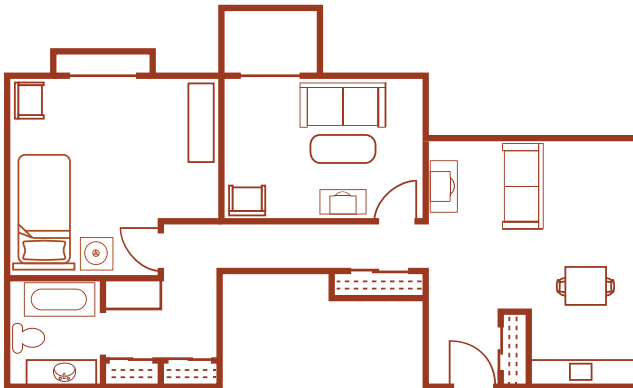
Mt. Hood



Mt. Rainer



Mt. Adams



PACIFICA
SENIOR LIVING
CALAROGA TERRACE
Independent
Assisted Living

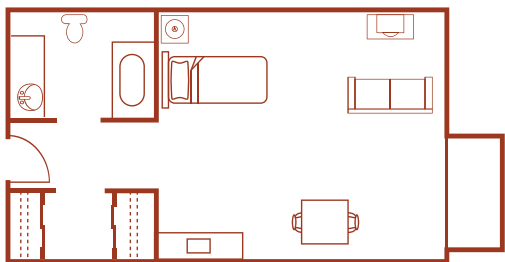
License #1968715845

503.234.8271 | 1400 NE Second Ave | Portland, OR 97232 | www.PacificaCalarogaTerrace.com

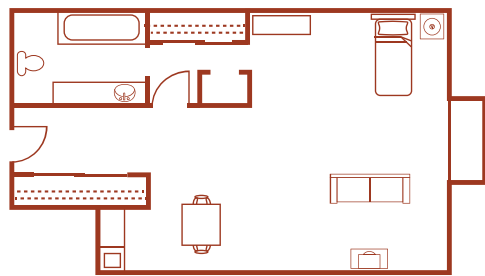


Heartland™ Living Floor Plans

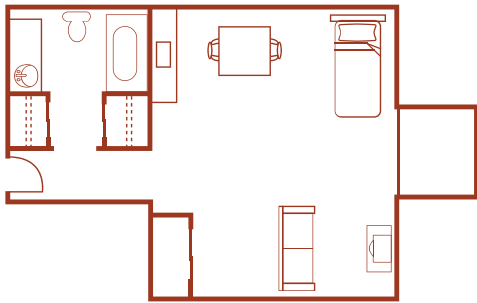
Silver Creek



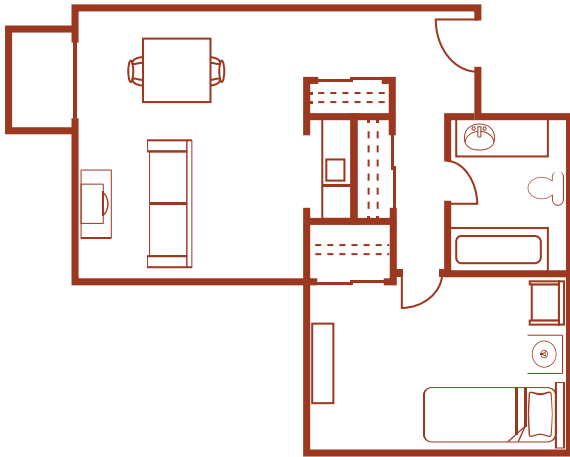
Calapooia



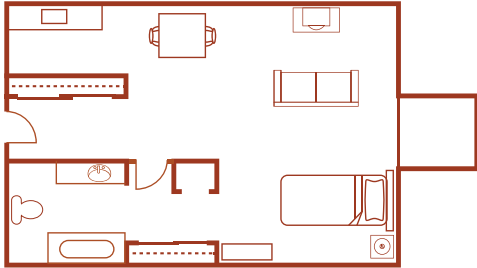
Santiam



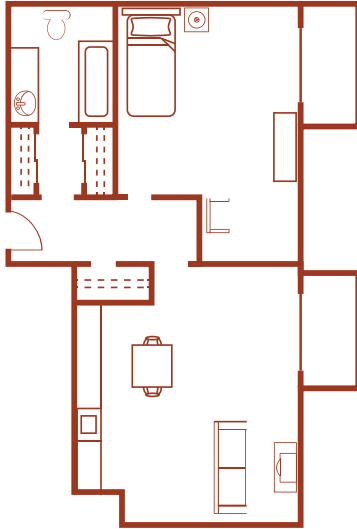
Tualatin



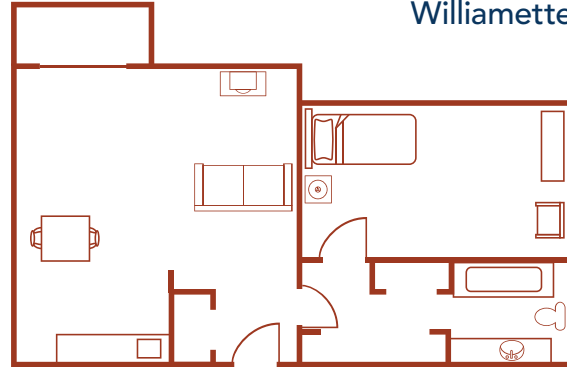
Yamhill



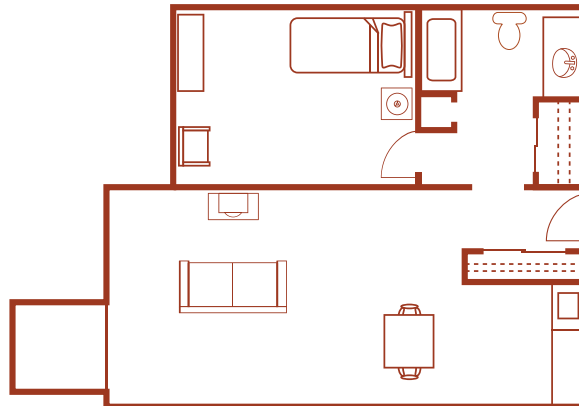
Clackamas



Williamette



Columbia




PACIFICA
SENIOR LIVING
CALAROGA TERRACE
Independent
Assisted Living

License #1968715845

503.234.8271 | 1400 NE Second Ave | Portland, OR 97232 | www.PacificaCalarogaTerrace.com



Independent Living

Pacifica Calaroga Terrace welcomes residents to enjoy all the best that life has to offer – a beautiful place to live, a private apartment, delicious dining, a full calendar of activities and a variety of amenities, all complemented by services that take the worry and inconvenience out of everyday living.

No more chores. No more cleaning. No more yardwork. Just time to spend as you wish – with plenty of programs, activities, incredible views, and outings to choose from.



Pacifica Calaroga Terrace community features include:

- 24-hour emergency call system
- Transportation
- Relaxing library
- Private parking garage
- Salon
- Chapel
- Personal laundry facilities
- Auditorium
- Gourmet dining room
- Beautiful grounds
- Private terrace



Independent Living Rates

Your retirement lifestyle should be as carefree and convenient as possible. Here you have the time to spend your days as you choose, free from the burdens of time-consuming home maintenance and chores. We provide a variety of exceptional services in your monthly fee, including:

- Apartment
- Apartment home maintenance
- Nutritious meals served daily in the dining room
- Weekly housekeeping
- Full-time life enrichment programs
- All utilities & phone
- Scheduled transportation




PACIFICA
SENIOR LIVING
CALAROGA TERRACE
Independent
Assisted Living

License #1968715845

503.234.8271 | 1400 NE Second Ave | Portland, OR 97232 | www.PacificaCalarogaTerrace.com



Heartland™ Assisted Living



The Heartland™ Assisted living program at Pacifica Calaroga Terrace provides seniors with the supportive services they need to continue living as independently and vibrantly as possible. Our highly trained Wellness Team creates a customized, personal care program for each resident based on an assessment conducted with the resident and his or her family prior to move-in, ensuring all needs will be met properly.

Assisted Living includes:

- 3 balanced meals and snacks daily
- Emergency call system
- Weekly housekeeping
- Weekly linen service
- All utilities including phone and cable
- Scheduled transportation



PACIFICA
SENIOR LIVING

CALAROGA TERRACE

Independent
Assisted Living

License #1968715845

503.234.8271 | 1400 NE Second Ave | Portland, OR 97232 | www.PacificaCalarogaTerrace.com



Heartland™ Assisted Living Rates

- Apartment home maintenance
- Weekly linen service and personal laundry
- Scheduled transportation
- All utilities (phone and cable service)
- Three balanced meals and snacks daily
- Life-enrichment programs and activities
- Large, appointed community room for gatherings
- Gracious library with computer
- Beauty salon/barber shop
- 24-hour staffing
- Beautiful grounds and private terrace level
- Auditorium
- Entertainment/game room
- Chapel

**Incontinence products not included*



License #1968715845

503.234.8271 | 1400 NE Second Ave | Portland, OR 97232 | www.PacificaCalarogaTerrace.com



Respite Care



At Pacifica Calaroga Terrace, we admire and respect those who care for their loved ones at home. But we also understand the challenges and stresses faced by a caregiver. There are times when you need a break from your responsibilities to focus on yourself.

Respite Care can provide you with the time and peace of mind you deserve while providing your loved one with 24-hour care and access to our engaging lifestyle.

This short-term stay option is also ideal for those considering a move to Pacifica Calaroga Terrace. Respite Care allows you and your loved one to experience the support and services we provide on a trial basis.

Respite Care includes:

- Furnished apartment
- Access to 24-hour personal care and assistance
- Three balanced meals and snacks daily
- A variety of life enrichment programs and activities
- Full housekeeping and laundry services



License #1968715845





Legacies™ Memory Care

Our Legacies™ Memory Care program provides those with Alzheimer's disease, dementia or other forms of memory loss with the support, care and respect they deserve to continue living a full, enriching life. Each resident receives a personalized care plan that is carefully implemented by our compassionate staff.

Adult Day Program

Our Adult Day Program, offered in select communities, is alive with engaging, enriching activities that invite and welcome all seniors to participate. Just as our residents enjoy personalized care, so do our program participants. This is the perfect way to meet new friends and share new experiences.

Respite Care

There are times in our lives when we need a little extra help. Pacifica's Respite Care program is available to allow families an opportunity to rest from the daily tasks required for a loved one. Our program is also perfect for individuals who are recuperating from a hospital/rehabilitation stay, or to just simply experience the Pacifica lifestyle. Trained team members work together to enhance continued dignity and trust. We know the difference a smile and kind word can make.

Companion Living

Companion Living enables seniors to enjoy all the care, services and amenities of a Pacifica Senior Living community with the added benefits of forging a new friendship, enhanced well-being and the cost savings of sharing a suite, just to name a few.

Designed for *Living Well*

Our communities are designed to help our residents live well, surrounded by services, amenities and programs.

Dining

Dining is a delight at Pacifica Senior Living. Meals are prepared fresh daily by our on-site chefs and are served in beautifully appointed restaurant-style settings by attentive dining room staff.

Life Enrichment

Our Life Enrichment programs offer a variety of opportunities to meet new friends, discover new interests, exercise and maintain health, enjoy exciting outings and excursions . . . and so much more.

Transportation

A full-time, certified chauffeur is available through the community's transportation department. Scheduled services take residents to nearby medical appointments, shopping trips, religious services, banks, postal services and more.

Pet Friendly

Pets are part of the family, so Pacifica Senior Living communities are pet friendly* and have designated pet areas for convenience.

**Weight limitations*





PACIFICA
SENIOR LIVING

It's a New Day.

And It's Yours!



PACIFICA

SENIOR LIVING

For a list of Pacifica Senior Living
communities, visit our website at
www.pacificaseniorliving.com

FULL-SERVICE RETIREMENT LIVING