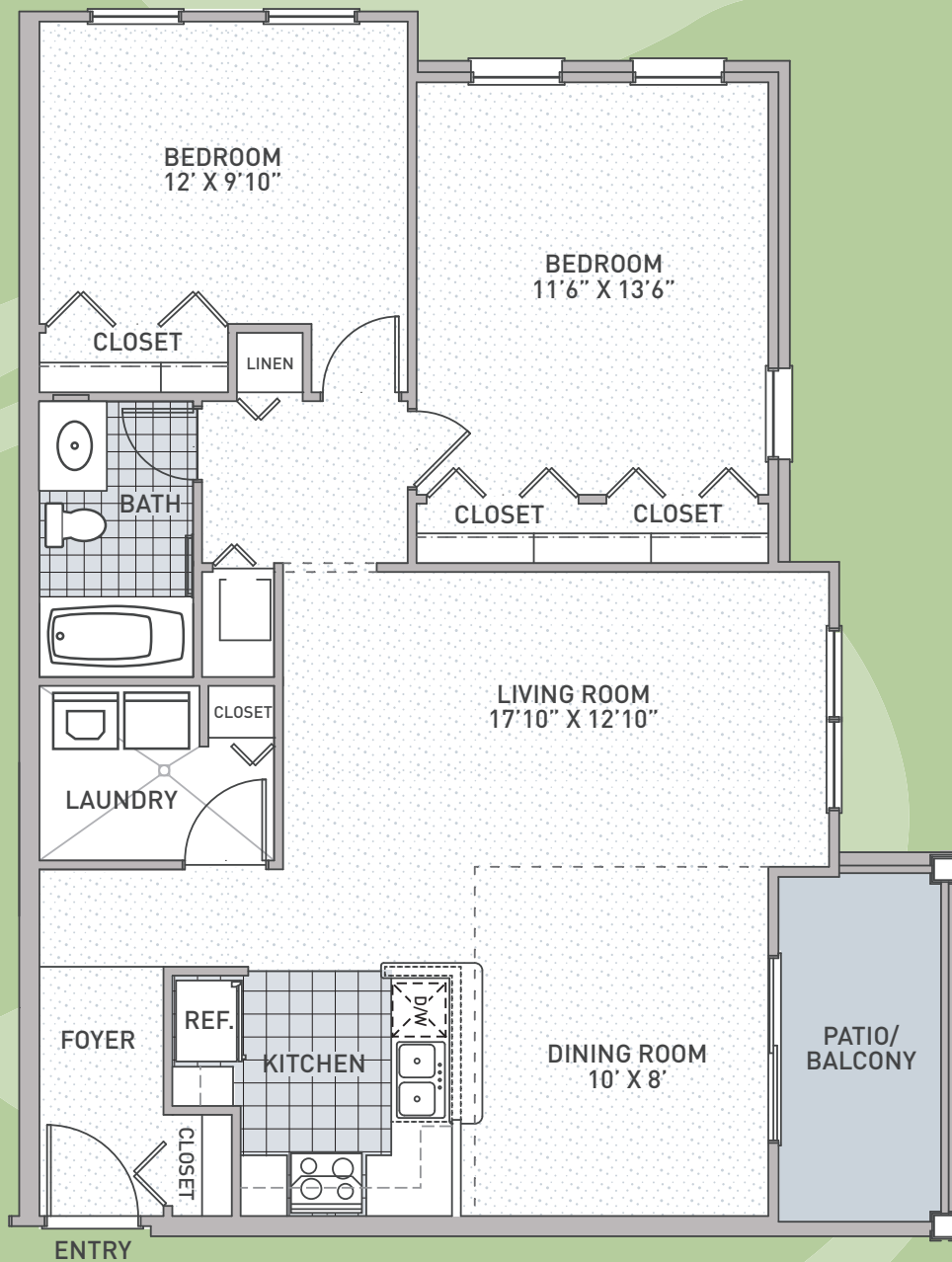


The Lytle

2 Bedroom/1 Bath
985 Sq. Ft.



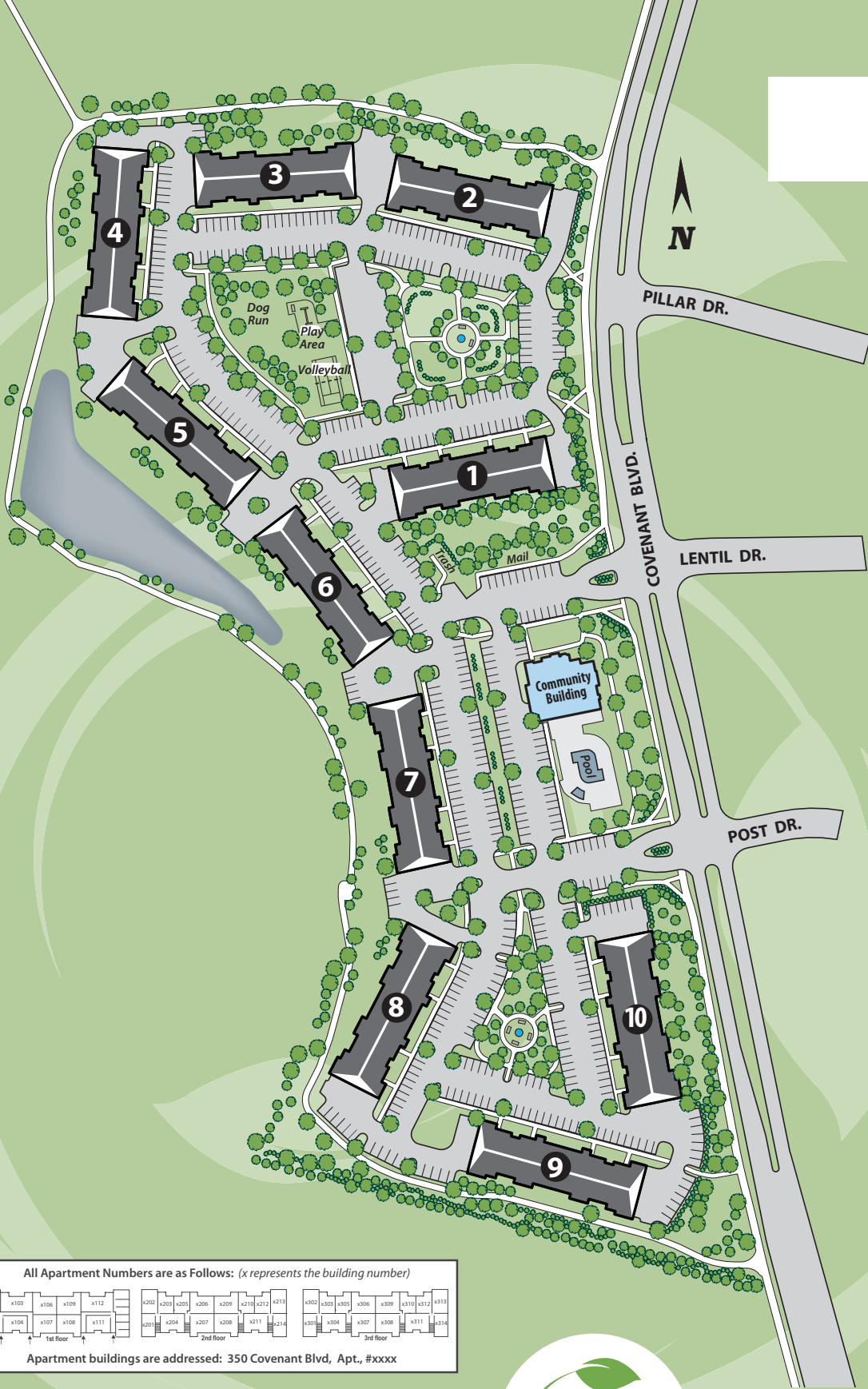
ARBOR BROOK



APARTMENTS



Site Plan



All Apartment Numbers are as Follows: (x represents the building number)

x103	x106	x109	x112	x202	x203	x205	x206	x209	x210	x212	x213	x302	x303	x305	x306	x309	x310	x312	x313
x104	x107	x108	x111	x201	x204	x207	x208	x211	x214	x301	x304	x307	x308	x311	x314				
1st floor				2nd floor				3rd floor											

Apartment buildings are addressed: 350 Covenant Blvd, Apt. #xxxx

ARBOR BROOK

APARTMENTS



Features

COMMUNITY FEATURES:

- Professionally landscaped 7300 sq. ft. innovative community center
- Expansive great room
- Elegant two sided fireplace
- Flat screen televisions
- Internet café with gourmet coffee bar
- Tastefully designed and well-appointed kitchen
- Executive conference center
- Professionally equipped exercise room with flat screen televisions
- Spacious veranda with glass doors
- Beautifully designed and landscaped swimming pool
- Expansive pool deck with shade providing pergola
- Outdoor courtyard kitchen with pergola
- Professionally designed playscape
- Peaceful picnic areas
- Walking trails through the treed banks of Overall Creek
- Well-designed pet area

APARTMENT FEATURES:

- Brick buildings and traditional architecture
- Attached garage parking available
- Well-designed 1, 2 and 3 bedroom floor plans, ranging from 728 to 1265 square feet
- Patio or deck per floor plan
- Beautifully designed kitchen featuring maple cabinetry, GE white appliances and dark walnut vinyl plank flooring
- Bathrooms feature white cabinetry and white porcelain tile
- Laundry room with full size GE washer and dryer and clothes sorting area
- Spacious living room, dining room and bedrooms featuring plush neutral color carpet
- Satin nickel hardware throughout residence
- Contemporary and versatile track lighting in dining room
- Windows fitted with designer selected blinds
- Soft hued paint accented with white paneled doors

ARBOR  BROOK

APARTMENTS

