

## The Ellington

2 Bedroom, 2.5 Bath Townhome | 1,331 Sq Ft

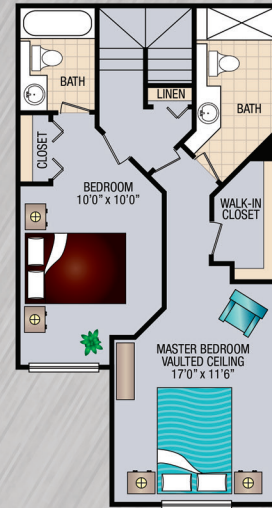
### APARTMENT AMENITIES

- Ceramic tiled flooring in the foyer and bathrooms
- Private attached garage with direct access
- Spacious living and dining rooms
- Large sliding glass doors to your private patio
- Spacious utility room with a large closet
- Two designated master suites on the upper level both with a large closet and picture window
- Vaulted ceiling in the master bedroom
- Pantry storage in the kitchen
- Kitchens equipped with frost-free refrigerator/freezer, self-cleaning oven/range, dishwasher and disposal
- Individually controlled heat and air conditioning
- Full-size washer and dryer

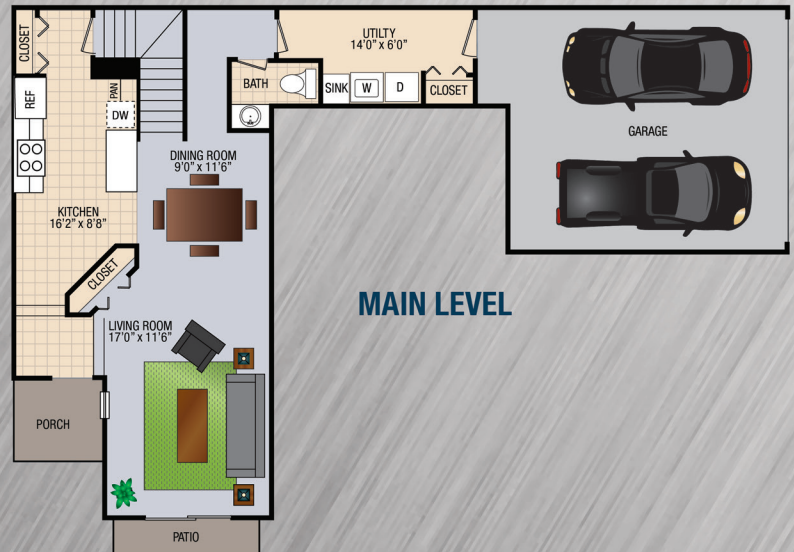
### PROPERTY AMENITIES

- 667 luxury apartment homes with private entrances and through-apartment design
- 24-hour attended gatehouse with controlled access
- Pet friendly with well-designated pet area
- 130 acres of professionally landscaped grounds
- Beautifully designed outdoor swimming pool with expansive sun deck
- Two outdoor tennis courts
- Two professionally designed playscapes
- Professional on-site management team available 7 days a week
- Online resident portal for rent payment and online work order management
- 24-hour emergency maintenance
- Furnished apartments available
- Easy access to all major freeways

UPPER LEVEL



MAIN LEVEL



BASEMENT LEVEL

