



Tasha Thomas Named Harbor Memory Care Director at Walpole's New Pond Village

(WALTHAM, Mass. – Feb. 5, 2018) – [Benchmark Senior Living](#) has appointed Tasha Thomas as Harbor Care Director at [New Pond Village](#) in Walpole, Mass. Thomas will oversee the soon to be completed Harbor Care Memory Center, offering an additional step in the continuum of care at New Pond Village. Thomas joins the team with nearly a decade of managerial experience in memory care support and health care.

Construction of the Harbor Care Memory Center is part of an \$8 million investment project allowing New Pond Village to expand its independent and assisted living services and begin offering memory care. Utilizing the latest research in cognitive impairment, the Center offers apartment living with comfortable open spaces where residents can enjoy the company of others in a dignified, secure setting.

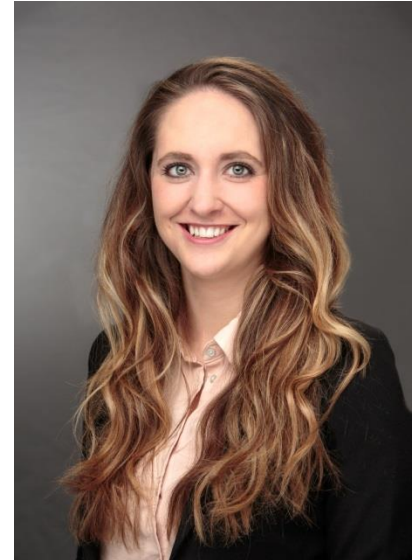
“We are excited to welcome Tasha Thomas to New Pond Village,” says Campus Executive Director Susan Cwieka. “Her leadership and passion for serving the memory care community supports our commitment to offering the best care to our residents.”

Prior to arriving at New Pond Village, Thomas ran two memory care units at an assisted living community in Vermont. She has also worked for a home care agency providing oversight to caregivers, educational support in memory care to families and on-the-job training opportunities to grow a supportive culture.

“I am excited to lead a new chapter at New Pond Village,” Tasha says. “My goal is to create a community of support led by a dedicated, expert staff and an environment that exceeds the expectations of our residents and families.”

Thomas has a bachelor's degree in nursing from St. Joseph's College of Maine and is certified through the National Council of Certified Dementia Practitioners.

A resident of Mills, Mass., Thomas enjoys exploring the outdoors, taking scenic car rides and spending time with her dog, Osi, and her cat, Deezy.



About Benchmark Senior Living

Based in Waltham, Mass., Benchmark Senior Living is a leading provider of senior living services in the Northeast. Founded in 1997 by [Tom Grape](#), Benchmark operates 56 senior living communities offering independent living, assisted living, Alzheimer's care and continuing care in Connecticut, Maine, Massachusetts, New Hampshire, Pennsylvania, Rhode Island and Vermont. The company will open its first community in the state of New York, Whisper Woods at Smithtown, in May 2018. Benchmark has been recognized as a top workplace by *The Boston Globe* for 10 consecutive years as well as by the *Boston Business Journal*, *Connecticut Post*, *Hartford Courant* and *Hartford Business Journal*. It's been named one of the healthiest employers by the *Boston Business Journal* and *Providence Business News*. Visit Benchmark at BenchmarkSeniorLiving.com.

About New Pond Village

New Pond Village is a Benchmark Senior Signature Lifecare community. Located at 180 Main St. in Walpole, Mass., the community was recently voted by Hometown Weekly Newspapers' readers as Best Retirement Residence, taking first place as a hometown winner and second place as a regional winner. For more information, visit www.newpondvillage.com or call 508-669-3031.

###