

# Briercrest of La Mesa – La Mesa, CA



November Update 2017



# Briercrest of La Mesa – La Mesa, CA



WESTMONT LIVING

- Owner
  - La Mesa Senior Living, LP
  
- Westmont Construction, Inc.
  - Tim Davies                                 Director of Construction
  - Frank McFarland                         Project Manager
  - Tevita Mickelsen                         Project Engineer
  - Ron Haro                                    Project Superintendent
  - Annette Sanders                         Construction Contract Administrator
  
- Design Consultants
  - Lenity Architecture                       Architect
  - Civil Engineer                             Kimley-Horn & Associates, Inc.
  - Structural Engineer                       Ashley & Vance Engineering
  - Interior Consultant                        NAC Architecture

# Briercrest of La Mesa – La Mesa, CA



WESTMONT LIVING

## Primary Subcontractors this Month

- WG Construction Utilities
- 20/20 Plumbing Plumbing
- Black Hawk Electric Electrical
- Four Corners Concrete
- Aquatic Technologies Pool



# Briercrest of La Mesa – La Mesa, CA



WESTMONT LIVING



Footprint of Wing C

November Update 2017



# Briercrest of La Mesa – La Mesa, CA



WESTMONT LIVING



Project Oversight Facing Northwest



Electrical Trenching in Core and Form Boards at Wing C

November Update 2017



# Briercrest of La Mesa – La Mesa, CA



WESTMONT LIVING

Storm Drain Piping



Storm Drain Boxes



# Briercrest of La Mesa – La Mesa, CA



WESTMONT LIVING

Footing and Rebar Facing East



Footing and Rebar on East Side of Wing C

November Update 2017



# Briercrest of La Mesa – La Mesa, CA



WESTMONT LIVING

Preparing Concrete Boom Pump for Footing Pour



First Concrete Truck for Footing Pour

November Update 2017

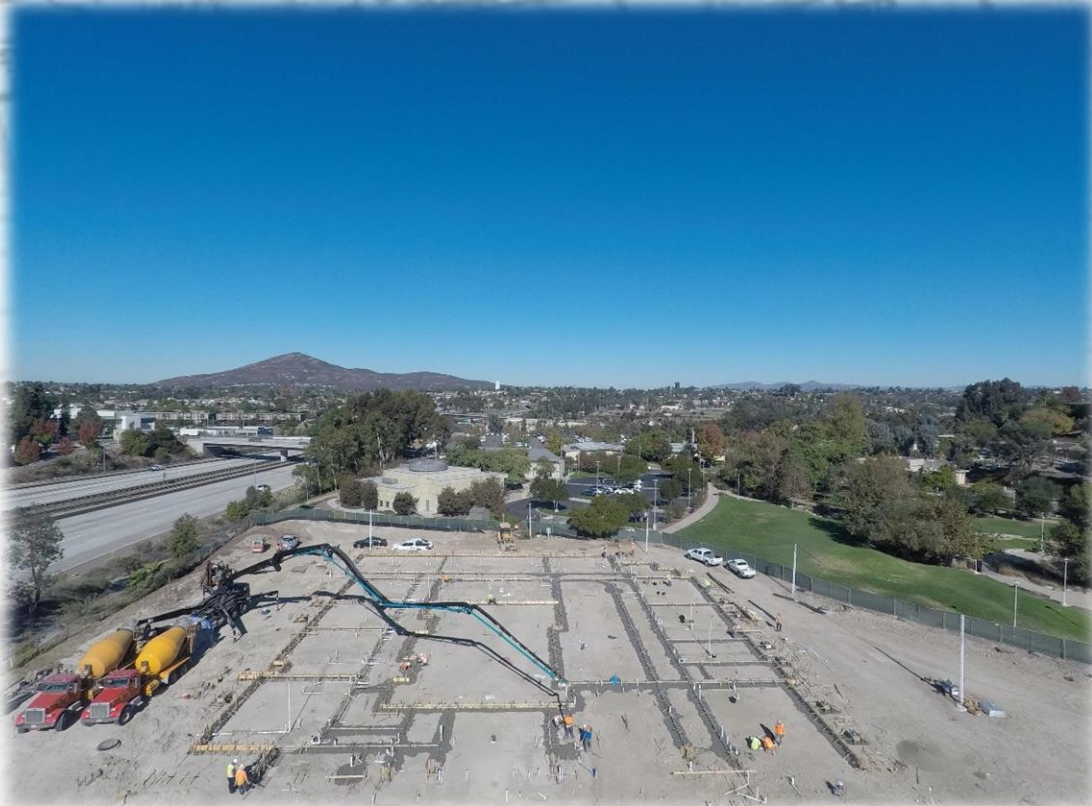


# Briercrest of La Mesa – La Mesa, CA



WESTMONT LIVING

## Wing C Concrete Footing Pour



November Update 2017



# Briercrest of La Mesa – La Mesa, CA



WESTMONT LIVING

## Vapor Barrier at Wing C



## Wing C Sand Underlayment



November Update 2017



# Briercrest of La Mesa – La Mesa, CA



WESTMONT LIVING

## Wing C Sand Underlayment Before Reinforcing Steel



November Update 2017



# Briercrest of La Mesa – La Mesa, CA



WESTMONT LIVING



**Reinforcing Steel for Slab on Grade**

November Update 2017